

LDP Strategic Sites | North West Transport Corridor

Autumn 2019



Liability and Disclaimer

While reasonable care has been taken in the preparation of this document to ensure that the information contained is accurate, this document, its content, names, text and images included in this document, are provided 'AS IS' and without warranties of any kind, either express or implied. To the fullest extent permissible pursuant to UK law, the County Council of the City and County of Cardiff ['The Council'] disclaims all warranties expressed or implied, including but not limited to implied warranties of reasonable care, satisfactory quality or fitness for a particular purpose and non-infringement of title.

The document contains guidance and notes on certain aspects of law as they might affect the average person. They are intended as general information only and do not constitute legal or other professional advice. It should not be relied on as the basis for any decision or legal action. The Council cannot accept liability for any loss suffered due to reliance on the contents of this document. The law is constantly changing so expert advice should always be sought.

To the extent permitted by applicable laws, no liability is accepted for any direct, indirect, incidental, special or consequential loss or damage to any user (whether arising in contract, tort including negligence or otherwise) arising out of or in connection with the use of this document.

The contents of this document shall not fetter the Council in the exercise of any of its statutory functions, including, without limitation to the generality of the foregoing, its functions as Local Planning Authority or Local Highway Authority.

Plans and illustrations identified in this document relate to live projects and therefore may be subject to change.

Details of highway safety scheme consultations can be viewed at www.cardiff.gov.uk > Resident > Parking, Roads and Travel > Transport Projects > Consultations.

- Photographs, Maps and Illustrations – © Cardiff Council / © Associated Developer

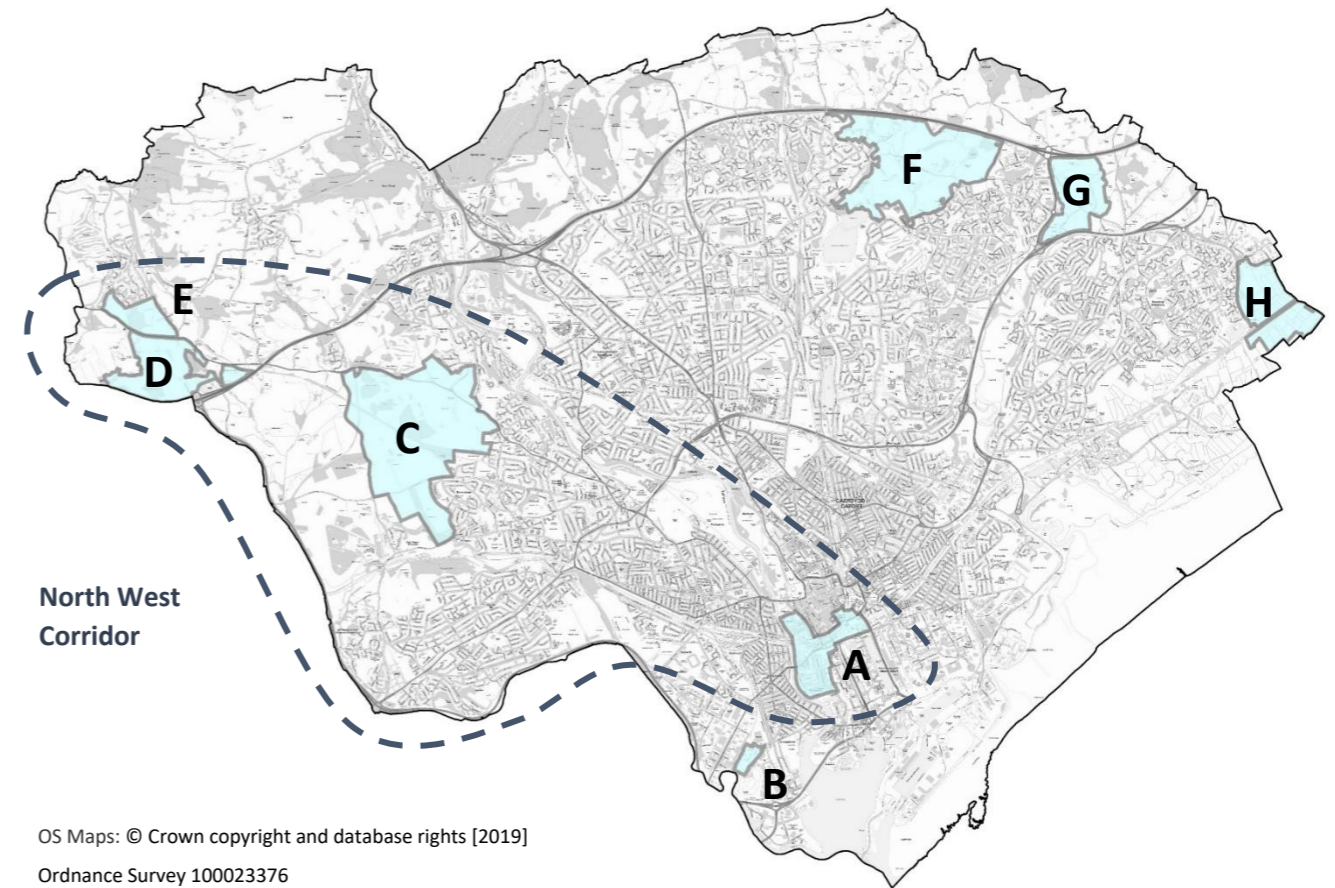
Introduction

Cardiff has eight Strategic Sites (containing 500 or more dwellings and / or significant employment uses), which have been allocated through the Local Development Plan (LDP) to help meet the need for new homes and jobs across the city.

To help ensure that existing and future residents, workers and visitors to Cardiff have alternatives to private cars and can choose to walk, cycle and use public transport to make their daily journeys, a series of highway and transport improvements are being provided alongside new developments.

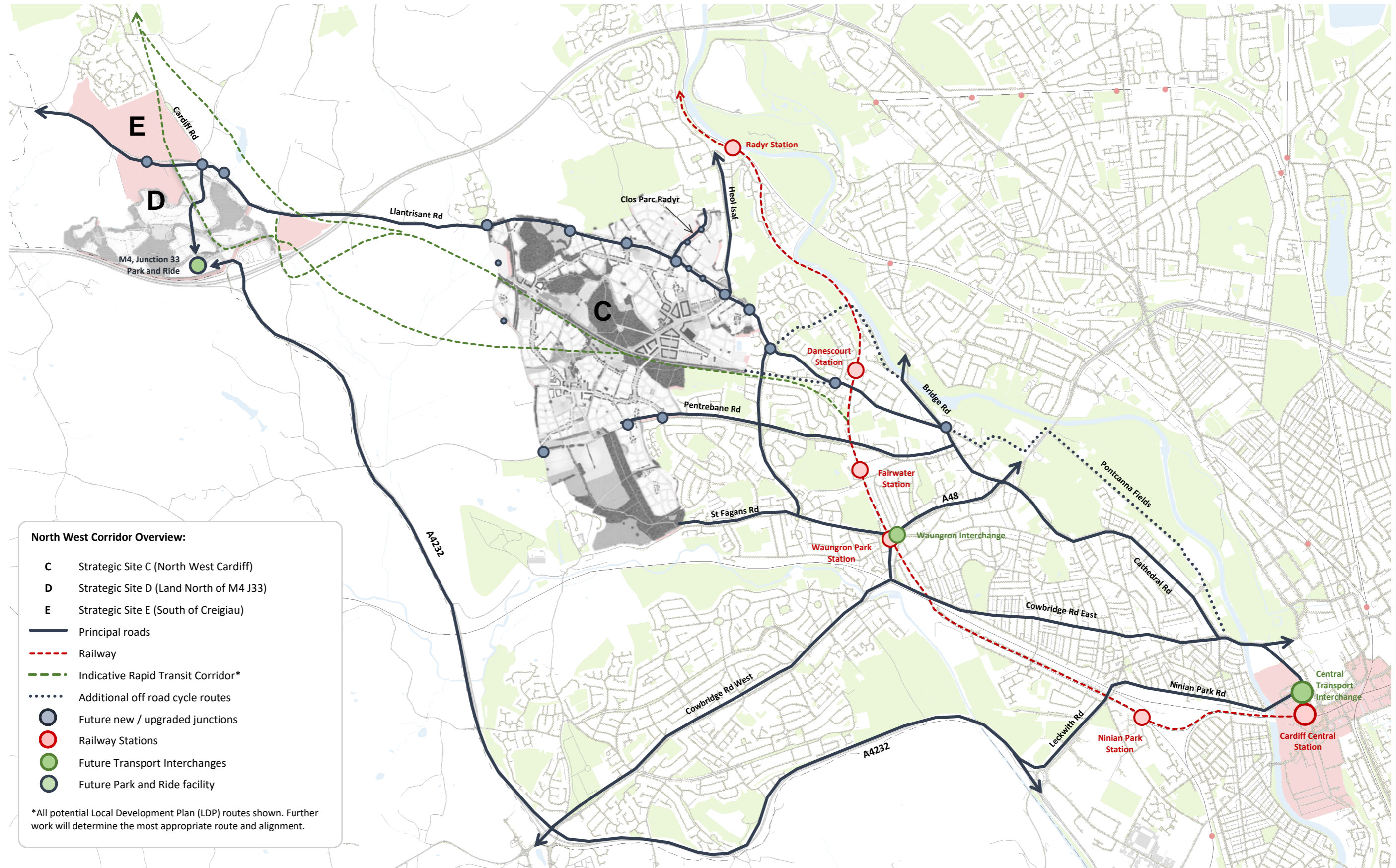
Connecting Strategic Sites C,D and E to surrounding areas including the city centre, the **North West Corridor** (which incorporates the A4119 Llantrisant Road and other routes in the vicinity of the sites) will see a number of enhancements over the coming years, including bus priority and rapid transit measures to help make journey times shorter and more reliable. Projects will also include expanding and improving Cardiff's cycling and walking network to help encourage more trips to be made by bicycle and on foot.

This monitoring document has been produced to provide a regular summary of development activity along the North West Corridor, it includes details of those projects currently under construction, planned works and recent completions.



Strategic Site A:	<ul style="list-style-type: none"> • Cardiff Central Enterprise Zone / Regional Transport Hub • Circa 2000 homes
Strategic Site B:	<ul style="list-style-type: none"> • Former Gas Works, Ferry Road: • Circa 500 homes, with associated community uses
Strategic Site C:	<ul style="list-style-type: none"> • North West Cardiff: • Minimum 5,000 homes, with employment and other community uses
Strategic Site D:	<ul style="list-style-type: none"> • North of Junction 33 on M4 • Circa 2,000 homes, with community uses, employment and Park and Ride
Strategic Site E:	<ul style="list-style-type: none"> • South of Creigiau: • Circa 650 homes, with associated community uses
Strategic Site F:	<ul style="list-style-type: none"> • North East Cardiff (West of Pontprennau): • Circa 4,500 homes, with employment and community uses
Strategic Site G:	<ul style="list-style-type: none"> • East of Pontprennau Link Road: • Circa 1,300 homes, with associated community uses
Strategic Site H:	<ul style="list-style-type: none"> • South of St Mellons Business Park • Strategic employment site.

North West Corridor Overview



North West Corridor Overview:

- C Strategic Site C (North West Cardiff)
- D Strategic Site D (Land North of M4 J33)
- E Strategic Site E (South of Creigiau)
- Principal roads
- - - Railway
- · - · - Indicative Rapid Transit Corridor*
- · · · · Additional off road cycle routes
- Future new / upgraded junctions
- Railway Stations
- Future Transport Interchanges
- Future Park and Ride facility

*All potential Local Development Plan (LDP) routes shown. Further work will determine the most appropriate route and alignment.

Proposals Relating to the North West Corridor

A number of proposed infrastructure improvements and programmes are of relevance to the North West Corridor:

Active Travel: The Council's Active Travel Integrated Network Map identifies a primary cycleway extending from Central Cardiff, through Llandaff and following a protected alignment along the disused railway through strategic development sites C, D and E. Other improvements include the provision of off-road cycling and walking facilities along Llantrisant Road, north of Danescourt Way, the development of a primary cycle way linking the City Centre and Caerau and Ely via Leckwith Road and the Ely Mill housing development, and development of secondary cycle routes.

Strategic Bus Network: The Council is progressing a rolling programme of infrastructure improvements to help reduce bus journey times, improve journey time reliability and facilitate the introduction of new services. Measures will include new bus lanes and the provision of local interchanges in order to extend the range of destinations which can be reached by bus and thus extend travel choices.

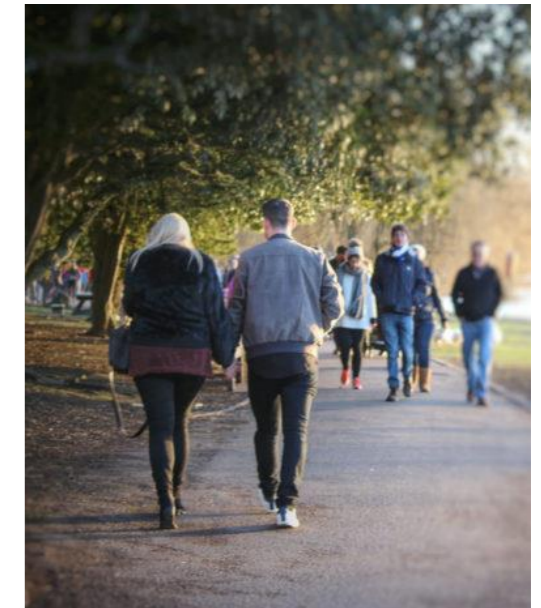
South Wales Metro: Plans set out by Welsh Government and Transport for Wales for developing a Metro connecting the wider South East Wales region. This includes a potential light rail corridor from the centre of Cardiff to North West Cardiff via strategic sites C, D and E, and also linking to Talbot Green and Pontyclun in Rhondda Cynon Taff.

Improving Access to Local Stations Programme: Improvements to the environment around local rail stations that will facilitate access from the surrounding area and transfer to other modes. Proposed measures include signing, walking improvements and passenger information.

Park and Ride Programme: Proposals for developing a park and ride facility at Junction 33 in line with the strategic site in this area which could intercept traffic on the A470, north of Cardiff. [The park and ride facility at M4, Junction 33 will be delivered by the developers of Strategic Site D and forms part of the planning consent for the site].

Highway Programme - Strategic Junction Improvements and Strategic Highway Improvements: These programmes include proposed improvements to junctions and highways in order to manage network resilience, improve access and road safety, and facilitate sustainable travel and development.

Road Safety Programme: Infrastructure improvements to address specific, local road safety concerns and provide enhanced facilities for journeys on foot and by bicycle.



Developer Contributions

The development of Cardiff's strategic sites is based on a masterplanning approach, where supporting infrastructure such as schools, shops and community facilities will be provided alongside the new homes and connected by a series of sustainable transport corridors. In addition to these onsite works, developer contributions towards the North West Corridor will take three forms:

Transport Improvement Works:

A series of transport improvement works will be undertaken by the developers adjacent to their Strategic Sites. These works will upgrade walking, cycling and public transport infrastructure along the North West Corridor, including enhancing links to surrounding areas and creating new entrances into the sites.

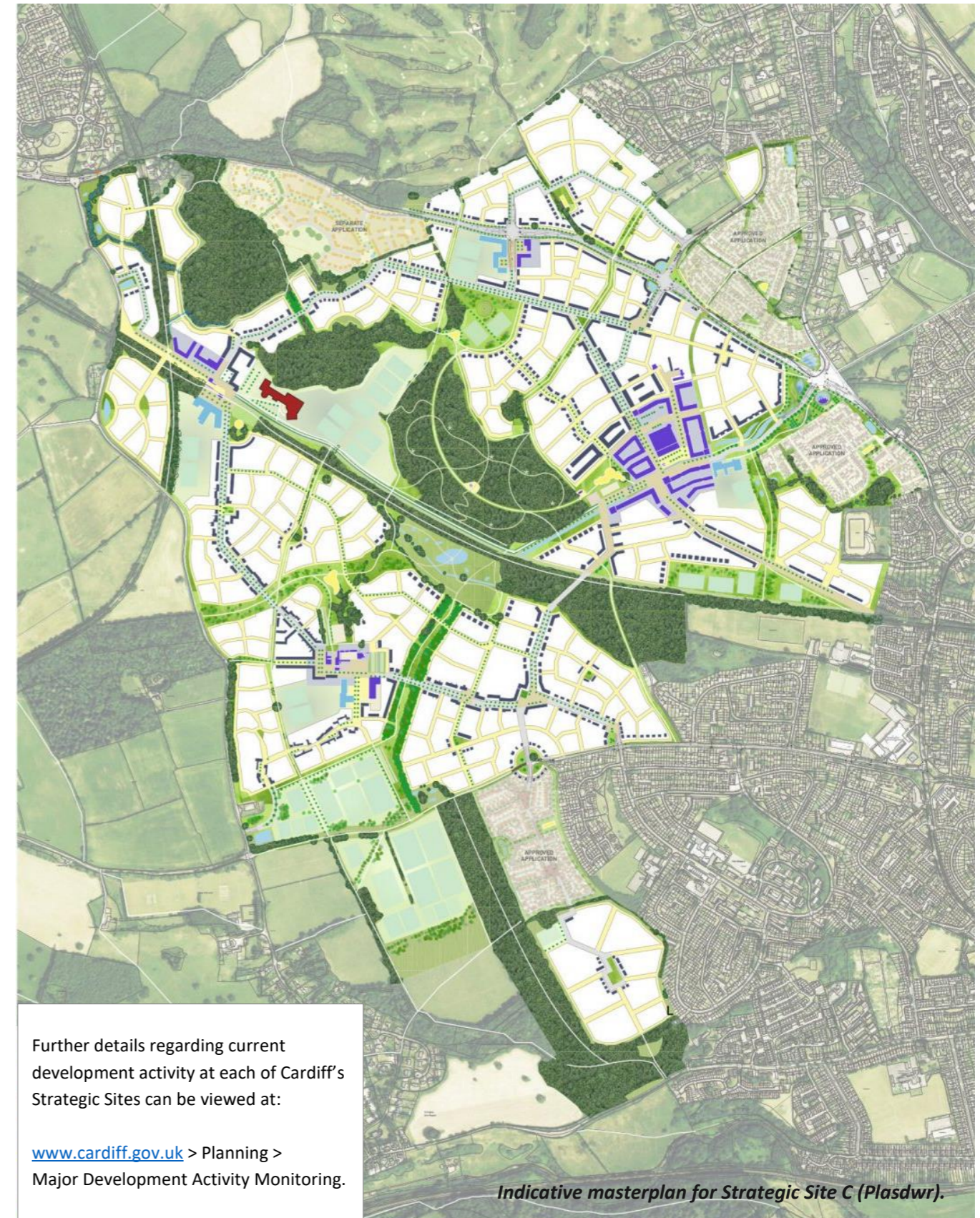
S106 (Financial) Contributions

To date, S106 (financial) contributions totalling around £26m have been secured towards highway and transportation improvements across the wider North West Corridor, including the provision of bus services serving the developments. These contributions will be paid in instalments alongside associated phases of the developments. Some of the key transport infrastructure being provided through these contributions include:

- Bus priority measures, including bus lanes on the A4119, A48, St Fagans Road and Fairwater Road
- Conversion of roundabouts at Bridge Road, Tangmere Drive and Waterhall Road to traffic signal control
- On-road cycleways
- Off-road cycle route between Western Avenue and A4119 Heol Isaf
- Pwllmelin Road and Fairwater Road traffic calming and cycling improvements
- New signalised pedestrian and cycle crossings and other pedestrian and cycle crossing improvements
- 20mph zones and traffic calming features
- Upgrading of footways and carriageways

Residential Travel Plans

Developers will also be producing Residential Travel Plan for their sites, which will include details of proposals and targets to limit or reduce the number of single occupancy journeys to the site and to promote travel by sustainable modes. As part of each travel plan, a bus pass and a £50 cycle voucher will be offered to the first residential occupier of each dwelling.



Current Projects | Llantrisant Road (Between Waterhall Road roundabout and Heol Isaf junction).

Project Details | Situated between the Waterhall Road roundabout (to the south east) and the junction of Heol Isaf (to the north west), this project will see the creation of a new roundabout providing access into Strategic Site C and to the adjacent fuel station.

Works along this part of the corridor will include:

- The provision of an inbound bus lane linking to the adjoining highway works at the Heol Isaf junction.
- A new footpath along the western side of the road
- A shared use (walking / cycling) path along the eastern side of the road
- The installation of two toucan (pedestrian / cycling crossings) linking to adjoining footpath connections
- A pedestrian / cycle crossing adjacent to the fuel station

Programme | These works are scheduled to be completed in early 2020.

Work Package: 4
Revision: V



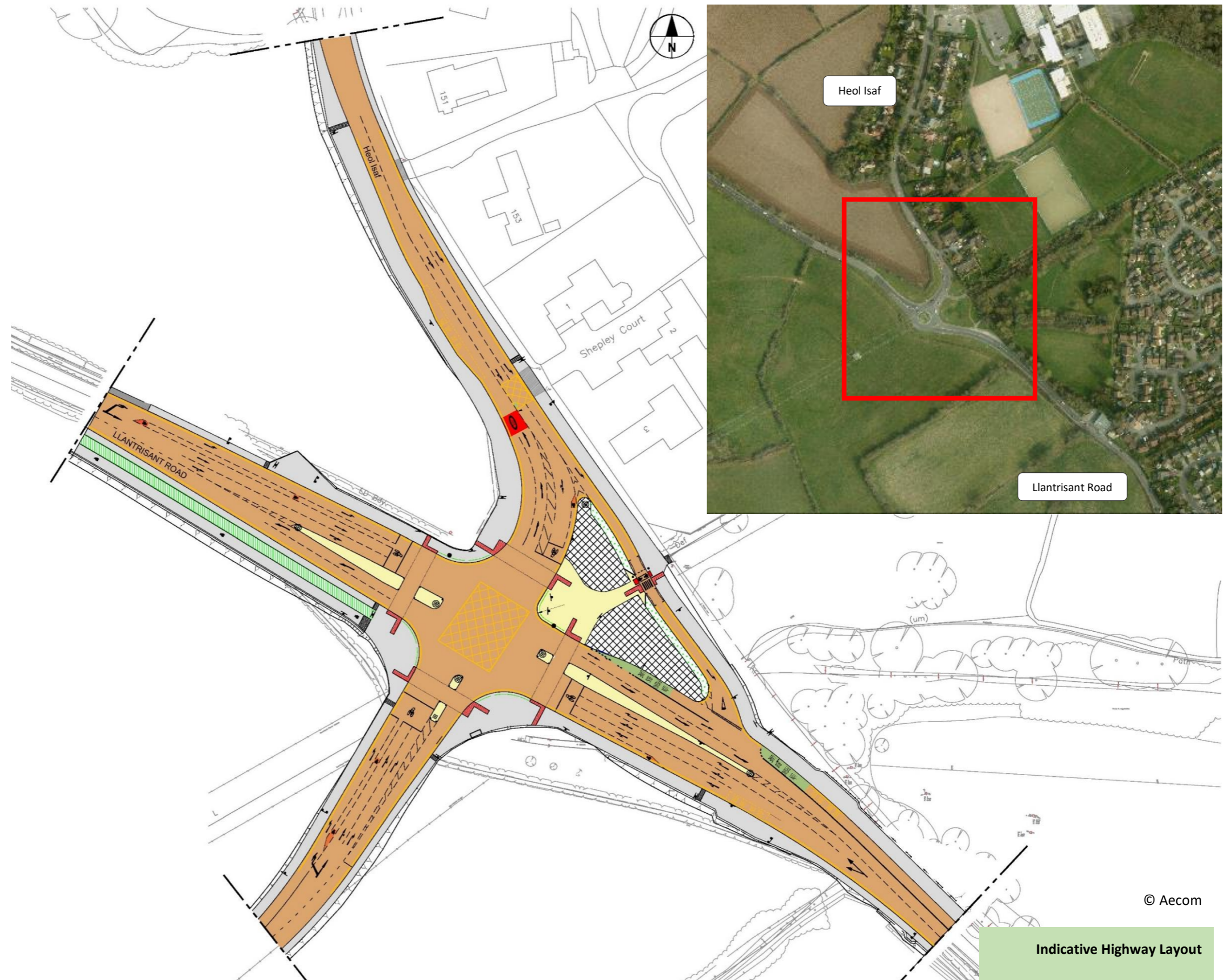
Current Projects | Llantrisant Road, Heol Isaf junction.

Project Details | Located at the junction of the A4119 (Llantrisant Road) and the B4262 (Heol Isaf), this project will see the removal of the existing roundabout and the creation of a four way controlled junction, with a new access point into the wider Plasdwr development.

Works along this part of the corridor will include:

- The provision of an inbound bus lane linking to adjoining highway works
- Pedestrian crossing facilities at all four junctions
- On carriageway cycle lanes and priority stop lines at junctions
- Footways connecting to surrounding areas
- Shared and segregated off carriageway cycleways

Programme | These works are scheduled to be completed in early 2020



Work Package: 3
Revision: P

Current Projects | Llantrisant Road, between Heol Isaf and Clos Parc Radyr Junctions.

Project Details | Situated along the A4119 (Llantrisant Road), between the junctions of Heol Isaf (to the east) and Clos Parc Radyr (to the west), this project will see the creation of two new entrance points into Strategic Site C.

Works along this part of the corridor will include:

- The creation of a new footway and segregated cycleway along the southern side of the road
- Connection to an existing public right of way to the south east
- A toucan (pedestrian / cycle) crossing at the north west boundary of the works, providing a connection to an existing public right of way
- The provision of an inbound bus lane and bus shelter

Programme | These works are scheduled to be completed in early 2020



Work Package 2
Revision U

Current Projects | Llantrisant Road between Heol St Y Nil and Cardiff Road junctions

Project Details | Situated at the junction of Llantrisant Road and Cardiff Road, this project will see the creation of two new entrance points into Strategic Site D. Works to this part of the corridor will include:

- Segregated footways and cycle ways with an associated green corridor
- Signalised pedestrian and cycle crossing facilities
- On carriageway cycling provision
- The provision of bus stops and bus shelters

Programme | These works are due to be completed in 2019



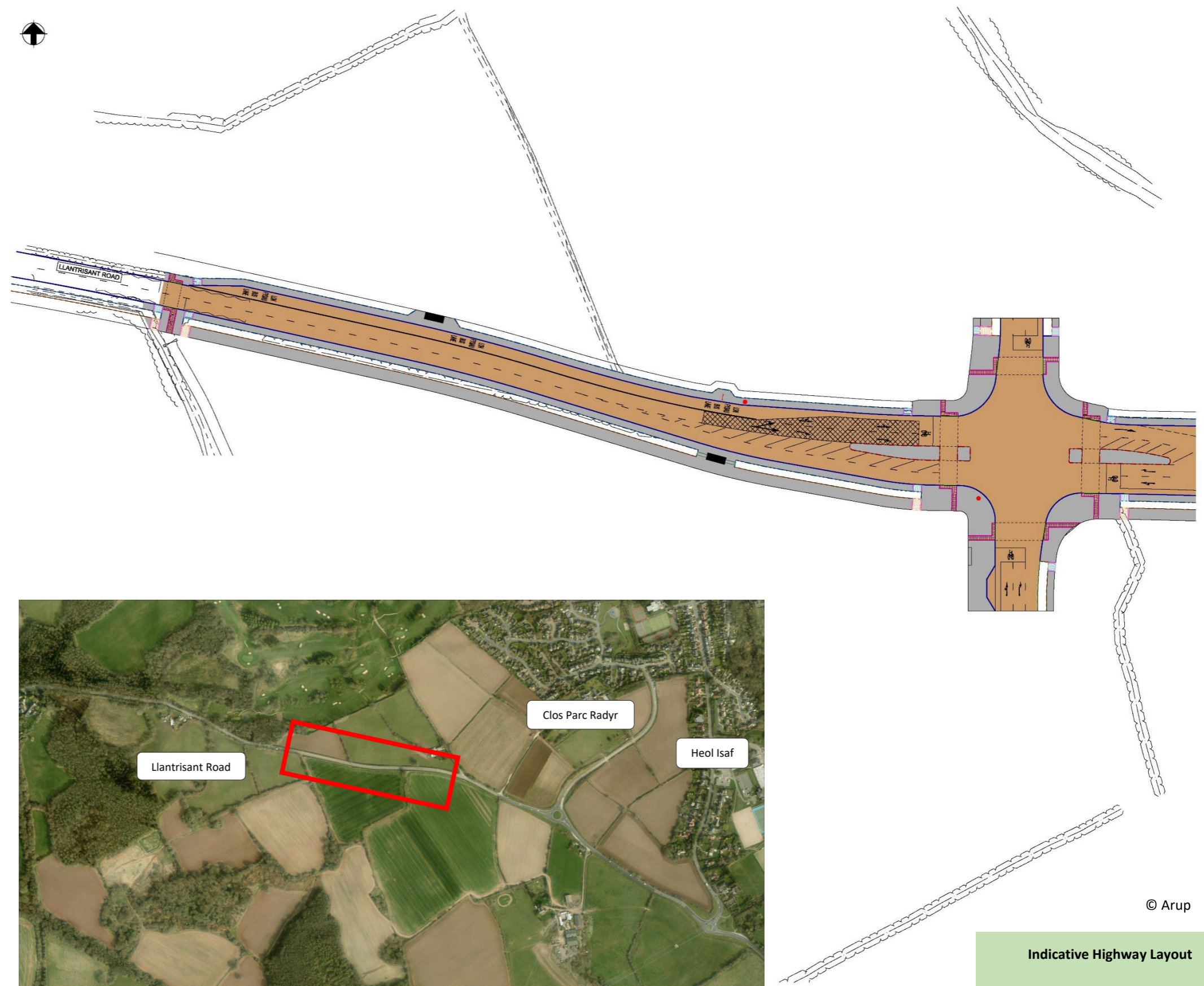
Work Package:
Revision:

Planned Works | Llantrisant Road, Between Goitre Fach and Clos Parc Radyr

Project Details* | Preliminary plans are currently being prepared for the section of the corridor that will connect between current works at Goitre Fach Farm in the west and Clos Parc Radyr in the east. Works along this part of the corridor will include:

- A new signal controlled junction creating new northern and southern access points into the Plasdwr development.
- On carriageway and off carriageway cycling provision.
- Signalised pedestrian and cycle crossing facilities
- An inbound bus lane
- New footways along the northern and southern side of Llantrisant Road

*Details may be subject to change.



Work Package:
Revision:

Recent Completions | Llantrisant Road (new junction at former Goitre Fach Farm).

Project Details | Located to the north of the former Goitre Fach Farm, this project has seen the upgrading of the A4119 along the boundary of the site and the creation of a new signal controlled junction at the entrance to the development. Works along this part of the corridor included:

- Footway and cycleway provision
- Pedestrian access points into the site
- Signalised pedestrian and cycle crossing facilities across Llantrisant Road
- A raised table crossing facility across Llantrisant Road
- The provision of bus stops and bus shelters

These works were completed in 2019.



© Phoenix Design Partnership



Recent Completions



Castle Street Bridge

Inbound and outbound cycle lanes and upgraded pedestrian crossing facilities



Lower Cathedral Road

Inbound bus lane and outbound on-carriageway cycle lane. New 20mph zone.



Sophia Close

Junction signal and pedestrian crossing enhancements



Cathedral Road

Two new zebra crossings near Plasturton Place and Sneyd Street



Llantrisant Road, between Bridge Road junction and Danescourt Station

Creation of inbound bus lane and provision of an off-carriageway shared footway / cycleway.

Recent Completions



Llantrisant Road, between Bridge Road junction and Danescourt Station

Upgrade from pelican to toucan crossing facility.



Pentrebane Road, west of Beechley Drive

Creation of new entrance into Strategic Site C at Cae St Fagans, with provision of footways and cycleway.

