

Cardiff Public Art Register



The Register

The Public Art Register contains details of Cardiff's current collection of public artworks. You can browse through the register and learn more about each piece of art, including its title, artist, location and year of unveiling. By selecting the 'online map' option, you can also view a full screen image of each artwork and find its exact location in the city

Cardiff's Public Art Collection

Cardiff is home to a collection of over 200 Public Artworks that have developed with the city over the past 150 years and form part of the fabric of its public spaces.

One of Cardiff's earliest pieces of public art is the statue of the Second Marquess of Bute by John Evan Thomas which was unveiled in 1853. The rapid growth of Cardiff can be attributed to the Second Marquess of Bute whose development of the docklands in the latter half of the 19th century led to Cardiff becoming one of the world's principal coal-exporting ports.

Early freestanding public art took the form of commemorative works and statues representing major figures and events from history. These artworks form a valuable part of the historic fabric of the City and the Civic Centre in Cathays Park contains an array of monuments and sculptures from the early 20th century. Bronze statues by Sculptors including Sir William Goscombe John, Herbert Hampton and James Pittendrigh Macgillivray are situated throughout Alexandra Gardens, Gorsedd Gardens and City Hall Lawn and commemorate historic figures including; 'Henry Austin – Lord Aberdare' (1898), 'Godfrey, the First Viscount of Tredegar' (1909) and 'The Third Marquess of Bute (1930).



Cardiff's Public Art Timeline



1853 Second Marquess of Bute



1886 John Batchelor



1888 Animal Wall



1896 Pierhead Building

The value and importance attributed to the City's early artworks can be recognised by the prominence of their locations within the Civic Centre, including the 'Welsh National War Memorial' (1928) which is situated in the heart of Cathays Park at the centre of Alexandra Gardens and the South African War Memorial by Albert Toft (1909) which stands at the southern end of King Edward VII Avenue between the Law Courts and City Hall.

The incorporation of art on buildings was particularly popular between the 1870s and the First World War. The development of the Civic Centre at the turn of the 20th century saw artworks forming an integral part of buildings including City Hall, the Law Courts and the former Glamorgan County Hall. The Old Library in the Hayes and the Pier Head Building at Cardiff Bay are further examples of buildings with high quality artistic detailing.

The 'Animal Wall' at Cardiff Castle represents an early example of non-commemorative artworks adding value and distinction to the quality of Cardiff's public spaces. Originally located outside the main entrance to the Castle, the artwork was unveiled in 1888 and consisted of nine animals that were created to the designs of William Burges by sculptor Thomas Nicholls. When Castle Street was widened in the late 1920's the wall was moved to its current location on the boundary of Bute Park and was supplemented with an additional six animals that were created by Alexandra Carrick.

In the 1990's Cardiff added significantly to its public art collection through the regeneration of Cardiff Bay. As part of its Regeneration Strategy, the Cardiff Bay Development Corporation commissioned a 'Strategy for Public Art in Cardiff Bay' which was implemented by the Cardiff Bay Arts Trust and resulted in a wide range of artworks forming an integral part of the buildings, streets and public spaces around the bay.



Cardiff's Public Art Timeline



1909 First Viscount of Tredegar



1909 South African War Memorial



1912 Mining



1924 Llandaff War Memorial

The commissioning of public artworks has continued across the city, with artists being included in several high profile development initiatives. The Wales Millennium Centre and The Senedd have both involved artists providing added quality and distinction to the developments with public art forming an integral part of the building's design; from the text that adorns the façade of the Wales Millennium Centre, through to its door furniture and glazing treatments and the slate seating area and glass 'Wind Hedge' outside The Senedd, through to Alexandra Beleschenko's glass floor treatment, 'The Heart of Wales' at the centre of the Debating Chamber.

Public art has also formed part of the recently completed St David's Shopping Centre, where the 'St David's Public Art Programme' involved the creation of a range of new artworks located both within the centres main arcades and in the surrounding streets and public spaces. At 25 metres tall, 'Alliance' by Jean - Bernard Metais forms the centerpiece of the scheme and stands as a landmark at the centre of Hayes Place. Other commissions include a series of chess sets which are located at Hayes Island and a range of bollards positioned along The Hayes that contain three dimensional miniature worlds within them.

Cardiff is continually developing and expanding its rich and varied collection of public art and the past two years has seen the unveiling of a number of other new artworks across the city. There have been commemorative statues dedicated to Sir Tasker Watkins VC and the legendary songwriter Ivor Novello, innovative installations, including the creation of 1000 bird and bat boxes in the new 'Animal Wall' that runs parallel to the River Taff at Century Wharf and a range of Council led collaborations between artists and local schools and community groups.



Cardiff's Public Art Timeline



1928 Welsh National War Memorial



1930 Allegories of Drapery Business



1968 Three Obliques (Walk in)



1975 Awen

The Public Art Online Map

How to access the public art online map:

- Visit: <https://ishare.cardiff.gov.uk/>. Select: 'Show Map Category', 'Environment', 'Public Art'

Show Map Categories
 + Your Council 0/10
 + Leisure 0/13
 + Living 0/5
 + Learning 0/13
 - Environment 1/16

Ancient Monuments
 Bring Sites
 Common Land and Village Greens
 Conservation Areas
 Country Parks
 Historic Parks and Gardens
 Household Waste Recycling Centres
 Listed Buildings
 Locally Listed Buildings
 Local Nature Conservation Sites

Public Art
 Title: Statue of John Cory
 Artist: William Goscombe John
 Year: 1906
 Road: Gorsedd Gardens
 View Image

(c) Astun Data Services - data derived from OS Premium data

POWERED BY **iShare**

Cardiff's Public Art Timeline



1992 Secret Station



1994 Blue Flash, Power Box & Mesh Chips



1995 A Private View



1997 Billy the Seal

Developing the Register

The Public Art Register currently includes information relating to 207 artworks. There are some gaps in the information that has been compiled and there will inevitably be artworks located across the county that haven't yet been identified.

Many of the public artworks provide an insight into the history and development of Cardiff, ranging from the statues of prominent figures from the city's past, to artworks that portray the heritage of a site and pieces that reveal local history. One of the aims of the register is to provide more information for each piece of public art, including an insight into the purpose of the artwork or the story behind its commissioning.*



Beastie Benches

Gwen Heeney - 1994
Waterfront Park and Britannia Quay

A series of nine carved brick benches that are inspired by the mythical creatures described in the Dylan Thomas poem 'Ballad of the long legged bait'.*

Map link

Developing the Register is an ongoing process that will require input from a wide range of sources and information is currently being sought regarding:

- Missing information for artworks included in the Register
- Artworks that aren't currently included in the Register
- An insight into the purpose / story behind individual artworks

The details contained in the Register represent the most consistent information available at the time. There may be some inaccuracies regarding artwork titles, unveiling dates or artist information.

Details of any amendments or additional information can be sent to publicart@cardiff.gov.uk

Cardiff's Public Art Timeline



2000 The Big Egg



2005 Wales Millennium Centre



2007 3 Ellipses for 3 Locks



2009 Alliance

The Register





3 Ellipses for 3 Locks

Felice Varini 2007
Cardiff Bay Barrage

The artwork is an anamorphic illusion and can only be viewed as three complete circles from a single vantage point on the Cardiff Bay Barrage.



A Meeting Place on the Plinth

Richard Harris 2006
The Senedd, Pierhead Street

The curved seating area provides an intimate space for people to spend time in and is constructed from the same Welsh slate that is used throughout the Senedd.



A Private View

Kevin Atherton 1995
A4232 Butetown Link Road

Stand behind the bronze figure and enjoy his view through the stainless steel sphere of the Norwegian Church located on the opposite side of Cardiff Bay.



Adventurer's Quay Bridge

Andrew Rowe 1999
Adventurer's Quay, Roath Basin



Adventurers Quay Mosaic and Car Park Grilles

David Mackie and Andrew Rowe 1999
Adventurer's Quay, Roath Basin



Albany Primary School Mosaic and Railings

Cindy Ward 2005
Albany Road



All Hands

Brian Fell 2001
Custom House Street

Located on the path of the historic Glamorganshire Canal, 'All Hands' depicts the canal workers pulling their boats along with heavy ropes.



Allegories of Drapery Business

Percy Thomas and Son 1930
Howells, St Mary Street



Allegories of Literature, Calligraphy and Printing

William Taylor 1896
The Old Library, Hayes Island



Allegories of Medicine, Law and Agriculture

Percy Thomas and Son 1938
Bute Building, Civic Centre



Allegories of Study and Rhetoric

William Taylor 1896
The Old Library, Trinity Street



Alliance

Jean-Bernard Metais 2009
Hayes Place

Referencing the major role of the sea in the city's economic history, 'Alliance's' hoop contains a visible liquid that rises and falls with the movement of the tide.



Angelina Street

Ray Smith 2004
Angelina Street

The steel railings and bronze plaques reflect the use of the adjoining playing fields and were designed in collaboration with local residents and school children.



Animal Wall

Thomas Nicholls 1888
Alexander Carrick 1931
Castle Street

The Wall originally consisted of nine animals and was located outside Cardiff Castle. Six new animals were added when it was moved to its current location in the 1920's.



Animal Wall (Century Wharf)

Gitta Gschwendtner 2009
River Taff Walkway, Century Wharf

The wall consists of 1000 bird and bat boxes that have created a new wildlife habitat along the banks of the River Taff.



Antarctic 100 - Captain Scott Memorial

Jonathon Williams 2003
Waterfront Park, Cardiff Bay

The mosaic sculpture overlooks the point in the Bay where Captain Scott's ship the Terra Nova set sail from Cardiff in 1910 on its ill-fated trip to the South Pole.



Atlantic

Doug Cocker 1991
Tyndall Street



Atlantic Echo

Dan Archer 2000
Ocean Way



Awen

Charles I'Anson 1975
Welsh College of Music and Drama
North Road



Balcony Grills

Andrew Rowe 2001
Bute Mansions, Schooner Way



Bay Panels

Martin Williams 1993
Waterfront Park

Located on the base of twelve street lamps around Cardiff Bay's waterfront, each terracotta panel illustrates a different aspect of Welsh culture.



Beastie Benches

Gwen Heeney 1994
Waterfront Park and Britannia Quay

A series of nine carved brick benches that are inspired by the mythical creatures described in the Dylan Thomas poem 'Ballad of the long legged bait'.



Billy The Seal

David Petersen 1997
Victoria Park

Having been rescued from the nets of a fishing boat operating out of Cardiff Docks, 'Billy' the Seal lived in Victoria Park Lake from 1912 until his death in 1939.



Black Bridge

Bradley Woods and Andrew Hartford
2004, Adamsdown Lane

The artists worked with young people from the local community centre to improve the condition of this key route between the communities of Adamsdown and Splott.



Blue Flash, Power Box and Mesh Chips

John Gingell 1994
Tyndall Street

Artistic design has helped turn this dominant and highly visible sub-station into a positive and recognisable landmark for the city.



Bowline Knot

Andrew Rowe 2000
Havannah Street

Used to tie ships and boats to the dock, this bronze sculpture reflects Cardiff Bay's heritage as one of the worlds principal coal-exporting ports.



Building Façade 36 to 38 Queen Street

Queen Street



Burnham Avenue Shops Mural

Kyle Legall 2007
Burnham Avenue



Bust of Pallas Athena

William Taylor 1896
The Old Library, Hayes Island



Bute Street Works

Andrew Rowe, David Mackie and
Heather Parnell 2001
Bute Street

The paving slabs and steel bollards positioned along Bute Street represent six themes from the local community, including: local legends, landmarks and trades.



Cader Idris

William Pye 1999
Wetlands Reserve, Cardiff Bay

This sandstone sculpture was inspired by the mountains, lakes and valleys of Wales and in particular 'Cader Idris' in Snowdonia.



Canal Park Entrance

Martin Williams 1994
James Street

Located on the path of the historic Glamorganshire Canal, the four panels reflect the mining of coal in the South Wales Valleys and its export form Cardiff Docks.



Cardiff Castle Clock Tower

William Burges 1873
Castle Street

The clock tower contains seven figures that represent seven planets and their corresponding Roman Gods. Each figure holds an item relating to their sign of the zodiac.



Cardiff Central Station Mosaics

Rob Turner 2003
Central Square

These bilingual mosaics depict the range of different people who have worked at Cardiff Centre Station and used its services over the course of the past century.



Cardiff International Arena

Alan Dawson Associates 1993
Mary Ann Street



Cargoes

Brian Fell 2000
Bute Street and Stuart Street

The artwork consists of 21 sculptures which are located on the buildings around Mermaid Quay and represent various parts of the poem 'Cargoes' by John Masefield.



Celtic Ring

Harvey Hood 1993
Roald Dahl Plass

The ring marks the start of the 55 mile Taff Trail between Brecon and Cardiff. Its textured surface contains maritime details including tidal charts associated with Cardiff's Docks.



Central Market

Andrew Handyside and Co 1891
Trinity Street



Century Wharf Railings

2009
Dumballs Road



Chess Sets

Bedwyr Williams 2009
Hayes Island

The four Chess Tables are available for anyone to use and chess pieces can be borrowed from the nearby Tourist Information Centre in the Old Library.



C-Interludes

Philip Bews and Diane Gorvin 2003
Lloyd George Avenue

Located at five points along Lloyd George Avenue, the artworks evoke the maritime nature of the area and are adorned with bronze sculptures including fish and seagulls.



City Hall Clock Tower

Albert Hodge 1904
City Hall, Civic Centre



Coal, Steel and Water

David Petersen 1988
County Hall, Hemingway Road

Inspired by the areas history of coal, steel and water. The spikes represent the masts of the ships and the middle section contains coal trucks queuing to be unloaded.



Commerce and Industry

Paul Raphael Montford
1904 Law Courts, Civic Centre



Compass Rose

Sebastien Boyesen 1997
Junction Lock, Britannia Quay

The granite mosaic commemorates Captain Scott's expedition to the South Pole in 1910. Its inscription reads: "To strive, to seek, to find and not to yield".



Connect 4 or 5

Adrian Stewart 2009
Wood Street Railway Bridge



Deconstruct

Philip Chancer 1995
Ocean Park



Deep Navigation

Stefan Gec 2000
Roald Dahl Plass

The first pillar includes the names of all of the South Wales Coal mines that were operational in 1964. The second pillar identifies all of the ports that Cardiff exported coal to.



Delta Street Seating

Andrew Rowe and
Simon Fenoulhet 2010
Delta Street



Drift of the Curlews

Sally Ann Matthews 2000
Havannah Street

The group of bronze curlews are located next to the Cardiff Bay Wetlands Reserve and reflect the abundance of wildlife in the area.



Drinking Fountain

Wills Brothers 1860
The Friary

This drinking fountain originally formed part of the Town Hall located in St Mary Street and was relocated when the building was demolished in 1914.



Equity

J. A. Stevenson 1927
West Bute Street



Etap Hotel

Graham Jones 2007
Tyndall Street



Events Arena

Howard Bowcott 1993
Runway Road, Pengam Green

The area has been designed to form a natural outdoor performance space. The stone blocks and contours of the grass verges provide seating around a central stage.



Falkland Islands War Memorial

1983
Alexandra Gardens

A memorial to the men of Cardiff who were killed in action during the Falkland Islands campaign in 1982.



Family Group

Robert Thomas 2005
Churchill Way



Fence and Gates

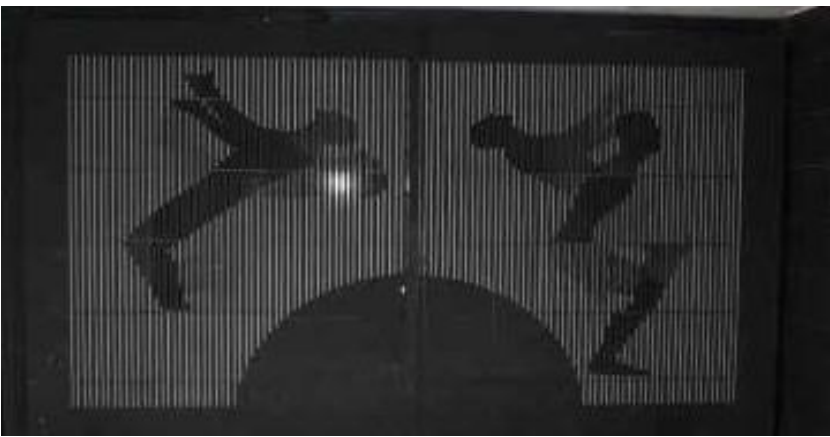
Jeremy Waygood 1995
Adelaide Street



Fitzhamon Embankment

Andrew Rowe, David Mackie and
Heather Parnell 2007
Fitzhamon Embankment

Inspired by local residents and school children from Riverside, these four sculptures represent seeds and spices used in local recipes.



Flip

Andrew Small 2010
Plymouth Street, Queen Street



Fountain Canopy - Grange Gardens

MacFarlanes of Glasgow 1909
Grange Gardens

Originally containing a drinking fountain, this canopy is one of two remaining examples that was gifted to the city in the early 1900's.



Fountain Canopy - Victoria Park

MacFarlanes of Glasgow 1908
Victoria Park

Originally containing a drinking fountain, this canopy is one of two remaining examples that was gifted to the city in the early 1900's.



From Pit to Port

John Clinch and Jon Buck 2005
Waterfront Park

The artwork commemorates all of those men and women whom formed the link in the chain between the mining of coal in the valleys and its export from Cardiff Docks.



Funnel and Smoke

Andrew Hazell 2004
Hemingway Road



Gateway Cardiff

Jane Kelly 1997
Pellett Street Footbridge



Gerddi Courtmead Gardens

Andrew Rowe, David Mackie and Heather Parnell 2006
Court Road



Girl

Robert Thomas 2005
Gorsedd Gardens



Grange Gardens War Memorial

Henry Charles Fehr 1920
Grange Gardens



Gren Sculpture

Nia Wyn Jones 2008
Media Wales Building, Park Street



Industrial Pieces - Lloyd George Avenue

2001
Lloyd George Avenue



Kitchener School Mosaic

Kate Derbyshire 1998
Kitchener Road

The mosaic is based on the fun that children can have in the playground whether the sun is out or if it's a rainy day.



Lamp Stands

Law Courts, Civic Centre



Lampstandards

Tess Jaray and Tom Lomax 1994
Britannia Quay

These elegant streetlamps reference maritime structures like cranes and masts. They are located along Cardiff Bays Waterfront at Roath Basin and Britannia Park.



Landmark

Pierre Vivant 1992
Tyndall Street / Ocean Way

This collection of geometric shapes made from traffic signs has created a distinctive landmark that is locally referred to as the 'Magic Roundabout'.



Landsea Square Water Feature

Jo Johnson Landscape Architects
2000
Landsea Square

Tucked away in the heart of Cardiff Bay, this water feature forms a central focal point to a small public square.



Lighthouse

Mark Renn and Mick Thacker 2009
Bute Town Police Station



Lighting Columns - Welsh Office

College Road, Civic Centre



Llandaff War Memorial

William Goscombe John 1924
Cathedral Green, Llandaff



Looking Both Ways

David Kemp 2001
Lloyd George Avenue



Loudoun Square Hoardings

Anthony Brito and Kyle Legall 2008
Loudoun Square, Butetown



Magistrates Court

Louise Shenstone and
Adrian Butler 1993
Fitzalan Place / Moira Terrace

This nine metre high mosaic adorns Cardiff's Magistrates Court. The figure of justice is surrounded by symbols representing order and balance.



Maindy Barracks War Memorial

Sir Edwin Lutyens 1924
Whitchurch Road



Maltings Park

Avtarjeet Danjhal 1993
Lewis Road / East Tyndall Street



Map of Llandaff

Angela Davies 1981
High Street, Llandaff



Medieval Town Wall

Kathy Dalwood and Anne Smyth 2009
St David's Centre

Located on the path of the Medieval Town Wall, these artworks reference Cardiff's history and heritage including its roles as a trading centre and trading port.



Memorial to 614 Squadron

Ieuan Rees 1996
Runway Road, Pengam Green

The blue pennant stone marks the former site of Cardiff (Pengam) Airport and commemorates the Royal Auxiliary Airforce 614 Squadron who served during World War II.



Memorial to Welsh Volunteers in the Spanish Civil War

1992
Alexandra Gardens

This commemorative artwork is "Dedicated to the Welsh volunteers for liberty who defended democracy in the Spanish Civil War, 1936-1938".



Merchant Seafarer's War Memorial

Brian Fell (Mosaic by Loiuise Shenstone and Adrian Butler) 1996
Harbour Drive, Cardiff Bay

The sculpture combines the hull of a ship with the shape of a timeless face. It is a memorial to the Merchant Seamen from South Wales who served during World War II.



Mill Lane Railings

Diane Maclean 1995
Mill Lane



Millennium Garden Sculpture

Malcolm Robertson 2000
University Hospital of Wales



Millennium Riverwalk

The Pioneers 1999
Millennium Riverwalk



Mind's Eye

Peter Randall-Page 2007
Park Place

Made from over 1000 individually crafted terracotta tiles, the full effect of the pattern only becomes apparent when standing directly outside the buildings entrance.



Miner

Robert Thomas 2005
Queen Street



Mining

Albert Hodge 1912
Glamorgan Building,
Civic Centre



Monorail

Sokari Douglas Camp 1995
Adamscroft Place,
Railway Embankment



Mosaic - Near Mount Stuart Primary School

The Pioneers 1994
Stuart Street



Mosaic's - Tharsis Close

Tharsis Close



Mother and Son

Robert Thomas 2005
Queen Street



National Cycle Network Mileposts

Jon Mills
City Wide

There are four different designs of milepost. This version 'The Fossil Tree' takes the form of an abstract tree and contains a range of fossils depicting the passage of time.



Natural Selection

Adrian Moakes 2006
Rover Way, Pengam Green



Navigation

Albert Hodge 1912
Glamorgan Building, Civic Centre



Nereid

Nathan David 1996
The Friary



Newtown Memorial Garden

David Mackie 2005
Tyndall Street

Demolished in 1966, Newtown originally housed hundreds of men and women who came over from Ireland to complete the building of the Bute Dock.



Obelisk Lamp Stands

Gorsedd Gardens Road



Palisade

Denys Short 1991
Waterfront Park, Cardiff Bay

This polished stainless steel sculpture has the practical purpose of concealing and protecting the hydraulic equipment for the nearby Roath Basin lock gates.



Panorama Stone

Jonah Jones 1993
Landsea Square

Bronze pegs mark the direction of destinations that have links with Cardiff, from nearby Penarth and Flatholm through to areas such as Nantes and Stuttgart.



Peace Sculpture

Anton Agius 2001
City Hall, Main Entrance

The statue commemorates those who marched from Cardiff to RAF Greenham Common in 1981 to protest against the use of the area to site cruise missiles.



Pengam Pocket Park

Mick Petts 2000
Ffordd Pengam



Pentyrch Shops

Angelo Bellandi 2004
High Corner,
Pentyrch



Pentyrch Street Seating

Ann Catrin Evans 2008
Pentyrch Street



People Like Us

John Clinch 1993
Tacoma Square, Mermaid Quay

The sculpture celebrates the people who lived and worked in Cardiff docks during the late 19th and early 20th century.



Pierhead Building

William Frame 1896
Roald Dahl Plass



Pigeon Wave

Martin Smith 2003
Central Station, Central Square

Based on the characters that inhabit the building, nine pigeons sit in a row above the railway stations clock and rise and flap their wings as a small toy train runs by.



Poetry and Music

Paul Raphael Montford 1906
City Hall, Civic Centre



Post Secrets

Jane Edden 2009
The Hayes

Situated at 12 locations along The Hayes, these bollards contain miniature three dimensional worlds within them. Look through the hole to see inside.



Quaystones

Howard Bowcott 2001
East Bute Street



Radyr War Memorial

Alfred Turner
Heol Isaf / Kings Road

TO THE
LASTING HONOUR
OF RADYR'S
GALLANT DEAD.
ALSO OF THE ONE HUNDRED
AND FORTY SEVEN OTHERS
FROM THE PARISH
WHO ALSO
SERVED 1914 1918



Razor Shells

Amber Hiscott and David Pearl 2008
Callaghan Square



Red Dragon

David Petersen 1984
Bute Building, Civic Centre



Regarding Guardians of Art

Dhruva Mistry 1990
National Museum and Gallery
of Wales, Park Place



Relief Sculpture

Edward Bainbridge Copnall 1961
Redwood Building, Civic Centre

Located above the entrance to the Cardiff University Welsh School of Pharmacy, the sculpture shows an elderly toga-clad person reaching out over a scientist and a nurse.



Rhiannon Seating

Gwen Heeney 1999
Barquentine Place



Sails

Richard Thornton 1996
Cardiff Bay Retail Park



Science and Education

Donald McGill 1906
Law Courts, Civic Centre



Scott Memorial

F. C. Bowring
1915 Roath Park
Lake

The clock tower commemorates Captain Scott's ill-fated expedition to the South Pole in 1910. A model of his ship, the Terra Nova can be seen at the top of the tower.



Seating - Discovery House

Alan Evans 1997
East Bute Street



Secret Station

Eilis O'Connell 1992
Ffordd Pengam



Ship in a Bottle

Melissa Gibbs 2004
Windsor Esplanade



Silent Links

Ian Randall 2000
Grangemore Community Park



Skyline

Cecile Johnson Soliz 1999
St Mary Street/Mill Lane



Sleeping Dragons

William Goscombe John 1904
University of Wales, Civic Centre



Somerset Street Mosaics

Maureen O'Kane 2010
Somerset Street



South African War Memorial

Albert Toft 1909
King Edward VII Avenue



Splott Road Railway Bridge

Andrew Smith 2010
Splott Road



St Mellons War Memorial

Newport Road / Chapel Row



Statue of Aneurin Bevan

Robert Thomas 1987
Queen Street



Statue of David Lloyd George

Michael Rizzello 1960
Gorsedd Gardens



Statue of Gareth Edwards

Bonar Dunlop 1982
St David's Centre



Statue of Godfrey, First Viscount of Tredegar

William Goscombe John 1909
City Hall Lawn



Statue of Grecian Female

1920
St Mary Street



Statue of Henry Austin (Lord Aberdare)

Herbert Hampton 1898
Alexandra Gardens, Civic Centre



Statue of Ivor Novello

Peter Nicholas 2009
Roald Dahl Plass



Statue of James Rice Buckley

William Goscombe John 1926
Cathedral Green, Llandaff



Statue of Jim Driscoll

Philip Blacker 1997
Bute Terrace



Statue of John Batchelor

James Milo Griffith 1886
The Hayes



Statue of John Cory

William Goscombe John 1906
Gorsedd Gardens



Statue of Joyance

William Goscombe John 1899
Thompson's Park



Statue of Judge Gwilym Williams

William Goscombe John 1910
Law Courts, Civic Centre



Statue of Lord Ninian Crichton Stuart

William Goscombe John 1919
Gorsedd Gardens



Statue of Sir Tasker Watkins VC

Roger Andrews 2009
Westgate Plaza, Westgate Street



Statue of The Second Marquess of Bute

John Evan Thomas 1853
Callaghan Square



Statue of The Third Marquess of Bute

James Pittendrigh Macgillivray 1930
Friary Gardens



Street Grilles National Assembly Building

Alan Evans 1993
East Bute Street

Forming an integral part of the buildings design, these ventilation grilles increase in size and complexity as they get closer to the main entrance.



Stuttgart Stained Glass

Prof Hans Gottfried Von Stockhausen
1985
The Hayes (St Davids Hall)

Located within St David's Hall, this stained glass was presented to Cardiff by the people of Stuttgart as a symbol of friendship between the two cities.



Taff Trail Relief Map

Harvey Hood 1993
Roald Dahl Plass

This relief map depicts the route of the Taff Trail between Cardiff and Brecon. Part of a matching pair, the second artwork can be found at the end of the trail in Brecon.



Territorial Army Centre

Petersen Studios 1998
Adam Street



The Big Egg

Rachel Joynt 2000
Henke Court, Schooner Way



The City Cross

1897
Cathedral Green, Llandaff



The Gift of Life Stone

2007
Alexandra Gardens, Civic Centre



The Heart of Wales

Alexander Beleschenko 2006
The Senedd, Harbour Drive



The Marl Railings

The Marl, Ferry Road



The Sea Receiving the Severn

Paul Raphael Montford 1906
City Hall, Civic Centre



The Secrets of Cardiff

Lesley Kerman 2009
St David's 2



The Spending Time Machine and the Triphid

Andrew Small 2009
Anderson Fields



The Taff, the Rhymney and the Ely

Henry Poole 1906
City Hall, Civic Centre



Three Obliques (Walk In)

Barbara Hepworth 1968
Corbett Road



Tide of Black Diamonds

Lilian Roosenboom 2001
Callaghan Square

The walkway draws together historic and contemporary aspects of the City's economy and symbolises (1) the transport of coal and (2) data transfer via fibre optic networks.



Tidemark Seatwall

Meic Watts 1992
Waterfront Park

The series of fossil-like markings along the wall reflect the passage of time. The artwork contains a maritime verse that is written in seventeen different languages.



Trawler Weathervane

Andrew Hazell 1997
Stuart Street



Tree Grills - Mill Lane

Diane Maclean 1995
Mill Lane



Tree in the Bay

Angharad Pearce Jones 2005
Harbour Drive



Triple Spout

William Pye 2000
Roald Dahl Plass

The artwork is located within a deep D shaped feeder pit that was historically used for balancing water levels in the adjacent Oval Basin.



Union of Shop, Distributive and Allied Workers

Louise Shenstone and
Adrian Butler 1987
Cathedral Walk



Unity and Patriotism

Henry Poole 1906
City Hall, Civic Centre



Urban Open Spaces

Jeremy Waygood 1999
Grangemore Community Park



Wales Millennium Centre - Building Facade

Text by Gwyneth Lewis 2005
Roald Dahl Plass

The large Celtic lettering contains two inscriptions: "CREU GWIR FEL GWYDR O FFWRNAIS AWEN" (Truth is as clear as glass forged in the flames of inspiration) and "IN THESE STONES HORIZONS SING"



Wales Millennium Centre - Colourfall

Amber Hiscott 2005
Roald Dahl Plass

This internal glasswork cascades from the function rooms at the top of the Millennium Centre down to the coffee shop below.



Wales Millennium Centre - Door Furniture

Ann Catrin Evans 2005
Roald Dahl Plass

The handles on the main doors are based on musical instruments. The push plates represent the ripples made in sand by the tides around the Welsh coastline.



Wales Millennium Centre - External Glass Manifestation

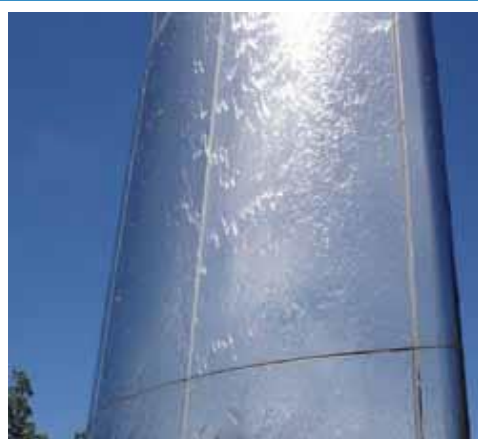
Amber Hiscott 2005
Roald Dahl Plass



Water Quarter

Howard Bowcott 2006
Galleon Way

Formed from thousands of individual slates, the three metre high sculpture was constructed entirely by hand and stands within one of three water pools.



Water Tower - Cardiff Bay

William Pye 2000
Roald Dahl Plass

Located at the entrance to Roald Dahl Plass, this 70ft high water tower has featured in episodes of the TV series Dr Who and Torchwood.



Water Towers - Callaghan Square

Amber Hiscott and David Pearl 2000
Callaghan Square

The sapphire blue aluminium towers have been laser cut with a design that evokes the spray of splashing water.



Waterfront Plaque

Jeremy Waygood 1998
Seager Drive



Watermark

Charles Quick and Alan Rogers 1995
Lloyd George Avenue



Welsh Dragon - City Hall

Henry Charles Fehr 1906
City Hall, Civic Centre



Welsh Millennium Milepost

Andrew Rowe 2007
Roald Dahl Plass

There are four different designs of milepost located across the country. This version is based upon the themes of nautical and industrial heritage.



Welsh National Falklands Memorial

2007
Alexandra Gardens, Civic Centre



Welsh National War Memorial

Sir J. Ninian Comper 1928
Alexandra Gardens, Civic Centre



West Close Square

Nina Edge and David Mackie 1993
West Close, Butetown



Whitchurch War Memorial

1920
Velindre Road, Whitchurch



Wife on the Ocean Wave

Graham Ibbeson 1993
Graving Docks, Cardiff Bay



Willows Clock

Andrew Hazell 2000
Tacoma Square, Mermaid Quay



Wind Hedge

Danny Lane 2006
The Senedd, Harbour Drive

Although they enclose The Senedd, the five parallel rows of thirty-two vertical glass elements echo the design of the building by being both transparent and permeable.



Window Grilles

Andrew Rowe 2000
Stuttgarter Strasse



Without Place

Sculptureworks 2011
Charles Street

Originally a busy residential street with bustling shops, offices and a range of trades and services, Without Place provides a trace of Charles Streets past cultural history.



Wood Sculpture - Bute Park 1

David Williams 2004
Bute Park



Wood Sculpture - Bute Park 2

2007
Bute Park



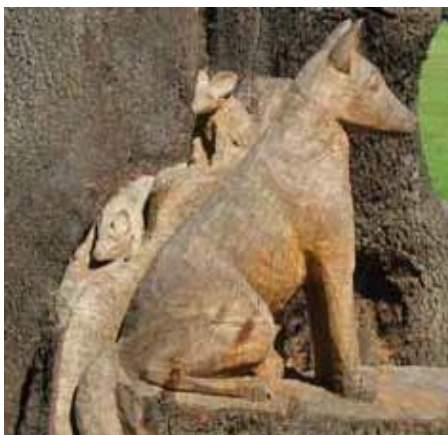
Wood Sculpture – Bute Park 3

Bute Park



Wood Sculpture - Daffodils

Nansi Hemmings 2007
Bute Park



Wood Sculpture – Fox and Owl

Nansi Hemmings 2004
Bute Park



Wood Sculpture - Grange Gardens

David Griffiths 2005
Grange Gardens



Wood Sculpture – Green Man

Dave King
Thompson's Park



Wood Sculpture – Otter and Red Kite

Dave King 2004
Bute Park



Wood Sculpture - Roath Park

Roath Park



Wood Sculpture - Roath Park BFG

Roath Park



Wood Sculpture – Tribute to Dwynwen

Jayne Sparks 2004
Bute Park



Wood Sculpture - Woodpecker

Nansi Hemmings 2007
Bute Park



Yellow Bench

Andrew Rowe 1999
Longueil Close

Contacts

If you have any general enquiries regarding this document, please contact:

**Placemaking
Strategic Planning
Cardiff Council
County Hall
Atlantic Wharf
Cardiff
CF10 4UW**

Email: publicart@cardiff.gov.uk

Acknowledgements

This document has been produced with the help of the Arts Agency SAFLE and has drawn on previous research contained in the Public Monuments and Sculpture Association's 'National Recording Project' online database.

