



Roath Park Cycle Route

Roath Recreation Ground improvements

Consultation Pack



Roath Park Cycle Route

Roath Recreation Ground improvements

Consultation Pack

The Council is consulting on improvements within the playing field on [Roath Recreational Ground](#) and on [Ninian Road](#) to improve [cycle and pedestrian accessibility](#) within the area.

The proposals within this document form part of a wider route that will be developed in the future from the City Centre to the Roath Park area and beyond.

The plans of the improvements for the Roath Recreation Ground playing field are contained in this document.

These plans are simplified indicative drawings to demonstrate the proposed alignments and current proposals being made.

We will use this feedback to refine the route and proposals to take forward to detailed design.

Information on [How to Respond](#) is provided at the end of this document, along with [Frequently Asked Questions](#).



Roath Park Cycle Route

Roath Recreation Ground improvements

Consultation Pack

New Connections

The proposed section is part of a wider scheme that aims to connect communities to major destinations across the city, including the City Centre, Cardiff Bay, as well as from the County boundaries to the east and west, providing safe active travel access to and from employment sites, residential areas, education centres and visitor destinations in the City.

Locally the route links to the Cycleway on Wellfield Road and also intends to link a number of schools and popular school-journey routes.

Cycleways will provide continuous routes that are intuitive and comfortable to use and separated from motor vehicles and pedestrians where needed.

Roath Park Cycle Route will provide a key active travel connection From the City Centre to Roath Park and potentially beyond to North and North East Cardiff, providing active travel access for employment sites, residential zones, education

centres and visitor destinations in the City. Opportunities will also be available to connect to other cycle routes.

Clean Air

We have a Clean Air Plan which aims to address NO2 levels in the short term, but we want to get the air we breathe in the city as clean as it can be. Improvements to sustainable travel options and increasing the number of journeys made by active travel (walking and cycling) is a key part of this plan.

**32% OF CAR JOURNEYS
ARE UNDER 3KM**

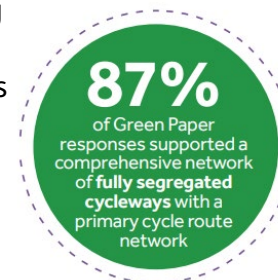
Source: Cardiff Travel Behaviour Research Baseline Report, 2011

**IN CARDIFF THE PHYSICAL
ACTIVITY BENEFITS OF
CYCLING PREVENT 13 EARLY
DEATHS ANNUALLY WHICH
IS VALUED AT £46 MILLION**

Source: Bike Life, 2019

Active Travel and Health

The numbers of people cycling and commuting by rail has increased, whilst car use has fallen - but it is not enough. We have ambitious targets for active travel in the city. The percentage of journeys made by active modes will increase significantly, with cycling continuing to grow in popularity. This safe segregated cycleway contributes to this active travel ambition.



Roath Park Cycle Route

Roath Recreation Ground improvements

Consultation Pack

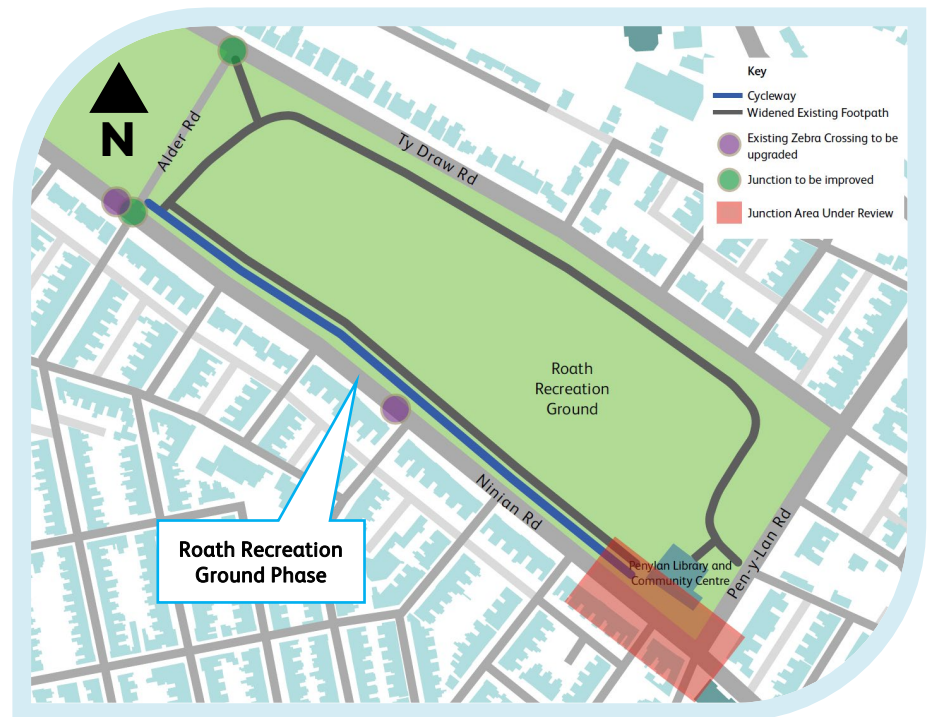
The improvements within Roath Recreation Ground and Ninian Road will provide opportunity to connect to other cycle routes in the future, whilst providing key benefits such as to promoting **sustainable and active travel** to schools, employment, connections to **public transport**, sports and leisure activities in the playing field and local facilities.

The route is being developed as part of a **WeITAG** appraisal process and is likely to be delivered in phases.

The planned pedestrian and cycle access improvements will form part of the **Integrated Cycle Network** aspirations.



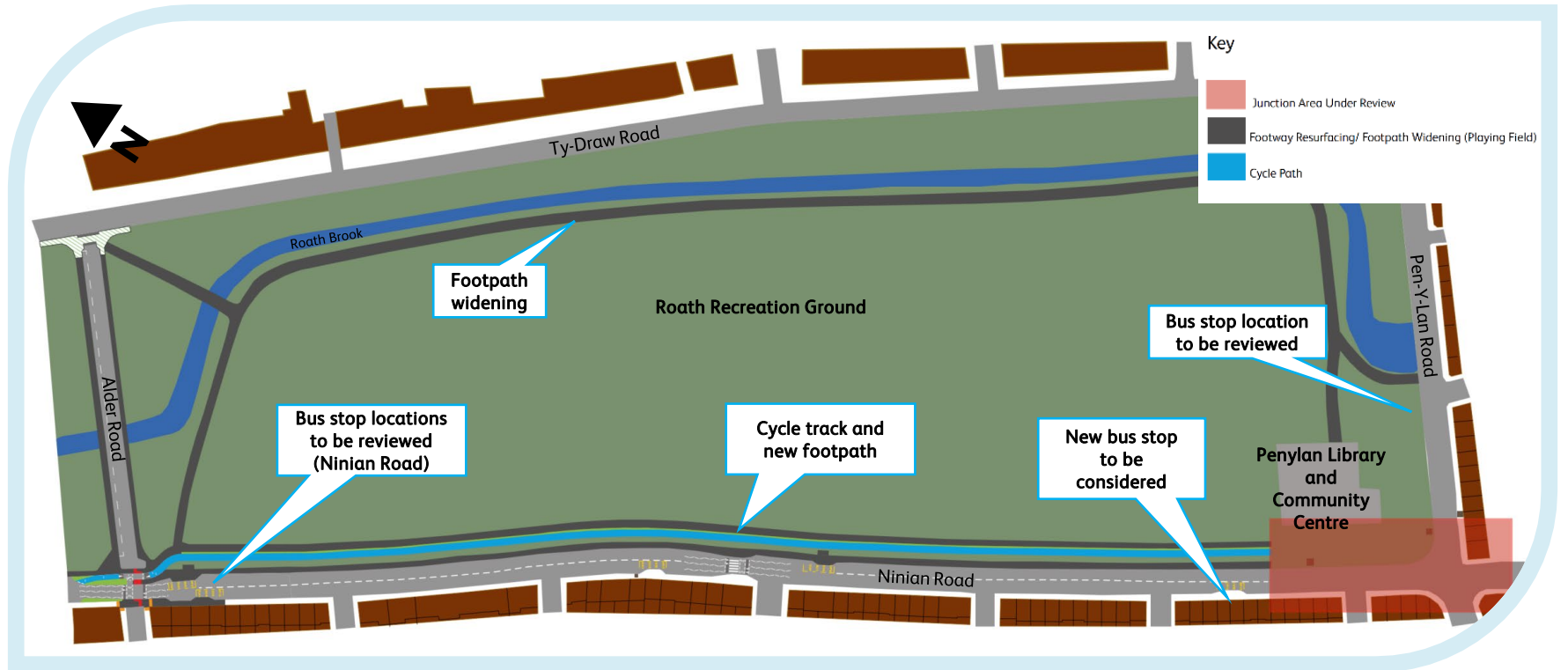
We would like to know your views in respect of the **Roath Recreational Ground** phase.



Roath Park Cycle Route

Roath Recreation Ground improvements

Consultation Pack



A new **cycle track and footpath** is proposed in the playing field between the junction of Wellfield Road and Alder Road. Low level lighting will also be considered.

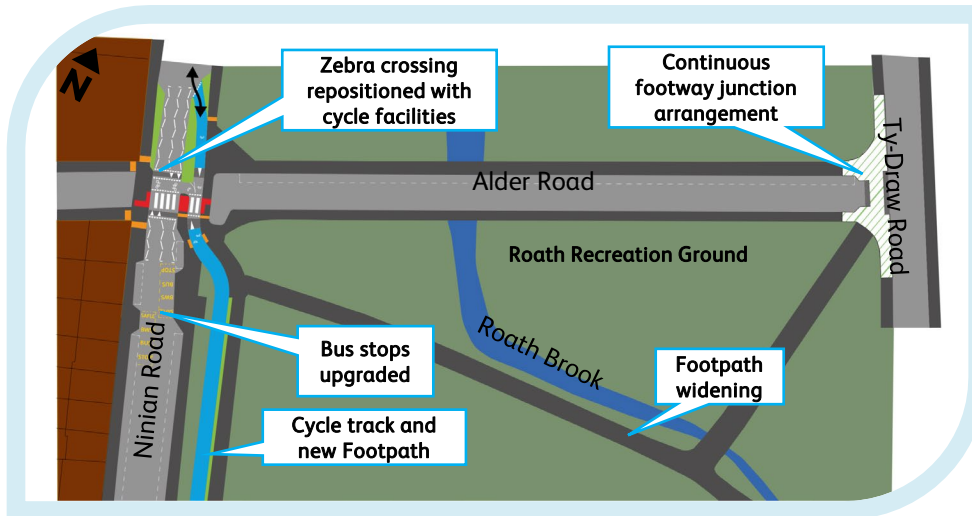
The footpath will be widened around the playing field. The gym equipment will be moved accordingly with cycle parking added where appropriate.



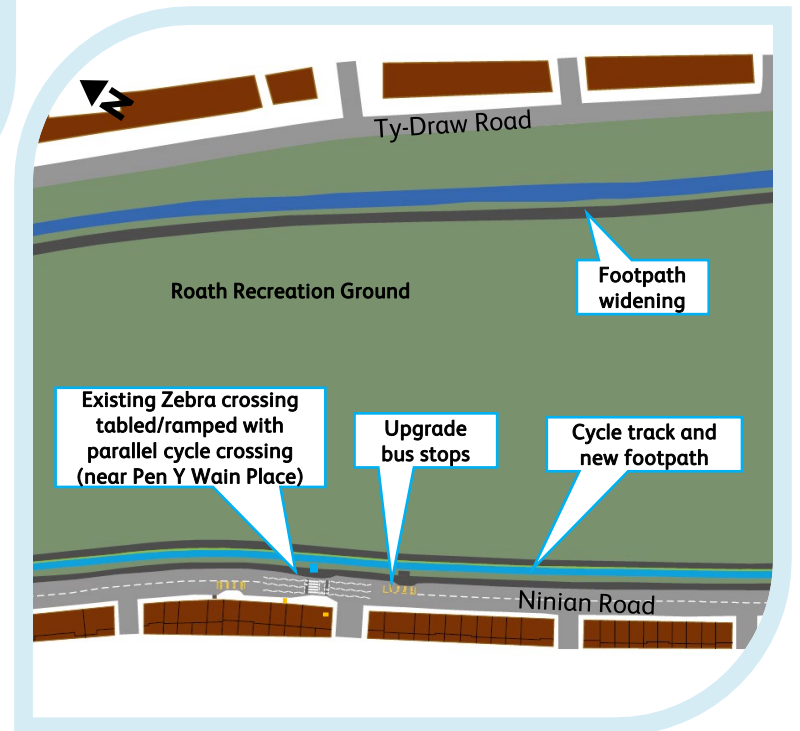
Roath Park Cycle Route

Roath Recreation Ground improvements

Consultation Pack



On Ninian road, the existing **zebra crossing** near Pen Y Wain Place will also be upgraded to a tabled crossing with a parallel cycle crossing. This will improve access to **Roath Park Primary School**.



Alder Road **junction improvements** will include moving and upgrading the existing tabled zebra crossing, repositioning / improving bus stops and closing off Alder Road at the western end.

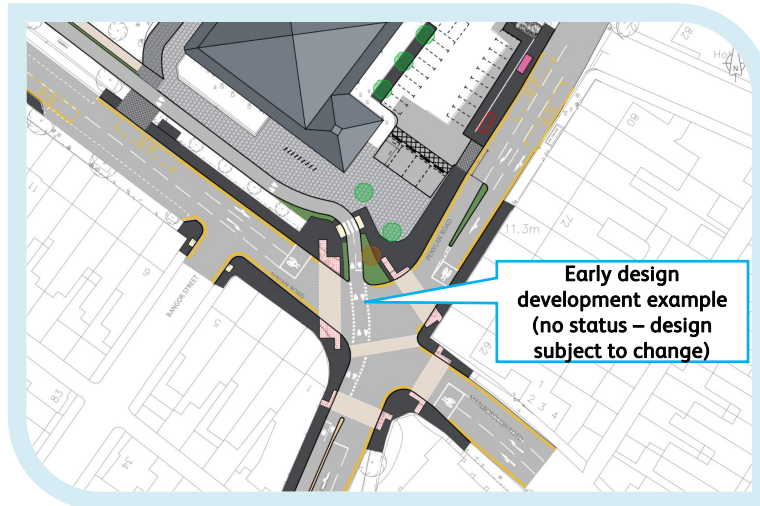
The **bus stops** on Ninian Road between Alder Road and Wellfield Road will be reviewed to determine whether they can be improved. This may include raised built-out bus stops for better access and relocating the stops.

Roath Park Cycle Route

Roath Recreation Ground improvements

Consultation Pack

Access improvements are also being proposed at the **Wellfield Road / Pen Y Lan Road** junction to connect the Roath Recreation Ground improvements to the Wellfield Road pop-up cycleway. An early design example is shown below (working progress).



Improvements are likely to include improved crossing facilities for pedestrians, a cycle crossing stage and widened footway areas. A two-way access to the Community Centre will also be necessary on Pen-y-Lan Road.





Roath Park Cycle Route

Roath Recreation Ground improvements

How to respond

Please respond to this consultation using this survey form: [HERE](#)

Or copy and paste the following URL: <https://wh1.snapsurveys.com/s.asp?k=164640367985>

This will allow you to make formal comments in response to this consultation.

Alternatively, email transportprojects@cardiff.gov.uk

or write to Transport Programme Team, County Hall Room 301, Cardiff, CF10 4UW.

This consultation will remain open until 30/03/2022

All responses will be reviewed and be used to help write the Consultation Report - one of the tools used to inform the decision-making process for the scheme. Changes may be applied to the illustrative plan shown as a result of the detailed design process, or from other feedback received during the engagement or design process.

Responses to questions about the proposal will be available within the Consultation Report which will be provided online when available via www.cardiff.gov.uk/transportprojects using the 'current consultations' link and selecting the scheme title. Following the publication of the Consultation Report, the project will then be designed in detail and implemented, subject to approval and funding.

Please note that only feedback and questions relating to this project will be considered or acted upon. If you have any feedback relating to other Council Services, please visit www.cardiff.gov.uk

We will also be unable to respond to individual responses – however all responses will be included within the Consultation Report which will be available shortly after the consultation close date. No personal information will be shared.



Roath Park Cycle Route

Roath Recreation Ground improvements

Frequently Asked Questions

What are you consulting on exactly? We want to know your views in respect of the current proposals for Roath Recreational Ground and along Ninian Road.

What improvements will be made at the Wellfield Road/ Ninian Road junction? The Council is investigating general improvements to the junction, in particular for pedestrians and cyclists. These improvements will integrate the junction with the proposals for Ninian Road and the existing pop-up cycle route on Wellfield Road and include changes to Community Centre car park.

Can I still access Alder Road? Yes, but to make access to the cycle track safer, Alder Road will be closed off at its junction with Ninian Road and the zebra crossing relocated. Vehicles would access Alder Road via Ty Draw Road. A turning area will be provided.

What is happening at the Alder Road / Ty-Draw Road junction? A continuous footway surface is proposed. This provides priority to pedestrians at the junction.

Will there be parking loss as part of the Playing Field Improvements? Currently, it is unlikely that this proposal will contribute to any parking loss, but some parking will be displaced. Parking management measures are being considered that align with the City wide comprehensive parking plan. Additional cycle parking and bike hire stations are being considered.

What will happen to vehicle parking in the area or as part of the wider route plans? Within different areas of the city, the Council has been rolling out changes to parking for certain areas on a zonal basis. These parking schemes enable more resident parking and controlled limited waiting parking to reduce commuter parking and improve parking opportunity for businesses and residents. There are no specific plans as part of this particular consultation, but plans will be provided in future for consideration. Some zones may be delivered as part of the cycleways being developed or in isolation to address local issues or include Pay and Stay parking.

Will I have to pay for parking? Where zonal parking is being introduced, a mixture of resident only permits, limited waiting and pay and stay parking will be introduced. There will be opportunity for free parking, however this will be for a limited amount of time. More information about permit schemes and pay and stay parking is available on the Council's website.



Roath Park Cycle Route

Roath Recreation Ground improvements

Frequently Asked Questions (continued)

Why are you proposing more cycle facilities? It is important to improve the air quality in Cardiff as soon as possible. To support this, it is important to encourage active travel and sustainable travel throughout Cardiff. The improvement of cycleways, bus stops, and bus routes are integral to this plan. We will consult on the wider proposals of this route in the future.

What cycle facilities are planned as part of this project? A new segregated bi-directional cycle track is proposed through the playing field that will improve access to the park and link to the Wellfield Road Pop-up cycleway, as well as Albany Road, which was recently consulted on as part of the Red Route. The Red Route has been renamed as the Roath Park Cycle Route. The route will be developed in the future and other connections could be added as part of Cardiff's Integrated Cycle Network; these would require further engagement with Local Councillors, Businesses and Residents.

Will trees be affected? No, the proposals will be designed to minimise impact on trees and their root systems.

Why are you widening the footpaths in the park? Council maintenance and waste vehicles have difficulty accessing the park, therefore widened footpaths will reduce damage to the grass. They will also provide improved space for pedestrians and park users to access and enjoy the park and wider paths give room to different user groups to pass each other and minimises conflict. The widening works will be funded from Section 106 funding contributions.

Can you remove the priority narrowings? As part of the scheme's development, we may consider upgrading the priority narrowings on Ty Draw Road to tabled (humped) crossing facilities that maintain low vehicle speeds, but allow two-way traffic flow.

Why can't the funding be used to fill in potholes? The Council receives separate funding to address maintenance issues.

What about traffic moving around the area and network? The City Centre and City as a whole will see significant changes in the future, in particular the promotion of active and sustainable travel measures. As part of our assessment work, we will look at what other traffic management measures we should include, such as more facilities for pedestrians and cyclists, bus priority and Smart Corridors to control traffic flow. More information about our current plans are on the Council's website and within the Cardiff's Transport White Paper. Visit: www.cardiff.gov.uk or [Transport White Paper \(cardiff.gov.uk\)](http://Transport White Paper (cardiff.gov.uk))