

**NEW TRAFFIC PROPOSALS FOR THE CITY AND COUNTY OF CARDIFF**

Notice is hereby given that the County Council of the City and County of Cardiff in exercise of its powers under the Road Traffic Regulation Act 1984 (as amended), Part 6 of the Traffic Management Act 2004 (as amended), The Civil Enforcement of Parking Contraventions (City and County of Cardiff) Designation Order 2010, The Civil Enforcement of Road Traffic Contraventions (General Provisions) (Wales) Regulations 2013, The Civil Enforcement of Road Traffic Contraventions (Guidelines on Levels of Charges) (Wales) Order 2013, and of all other enabling powers intends to impose traffic restrictions on the lengths of road referred to in the Schedule below. The nature of the restrictions and the titles of the proposed orders are also described in the said Schedule.

The following will apply to eligible residents wishing to apply for Residents Parking Permits. No more than 3 permits will be issued per property (one of which being a Visitor Permit) and the cost of such permits will be in accordance with the County Council of The City and County of Cardiff (Prohibitions and Restrictions of Stopping, Waiting, Loading and Street Parking Places) (Consolidation) Order 2024 Schedule 4 which are for the time being:-

Permit Application per Address per Financial Year	Fee Charged per permit issued
Resident Permit	1 <sup>st</sup> Permit £35.00 per annum 2nd Permit: £90.00 per annum
Residents Visitor Permit	£35.00 per 850 hours when obtained digitally (maximum of 5,100 hours per household, per annum)
Resident Accessible Visitor Permit	£35.00 (valid for 12 months) (1 per household, in lieu of a Resident Visitor Permit)

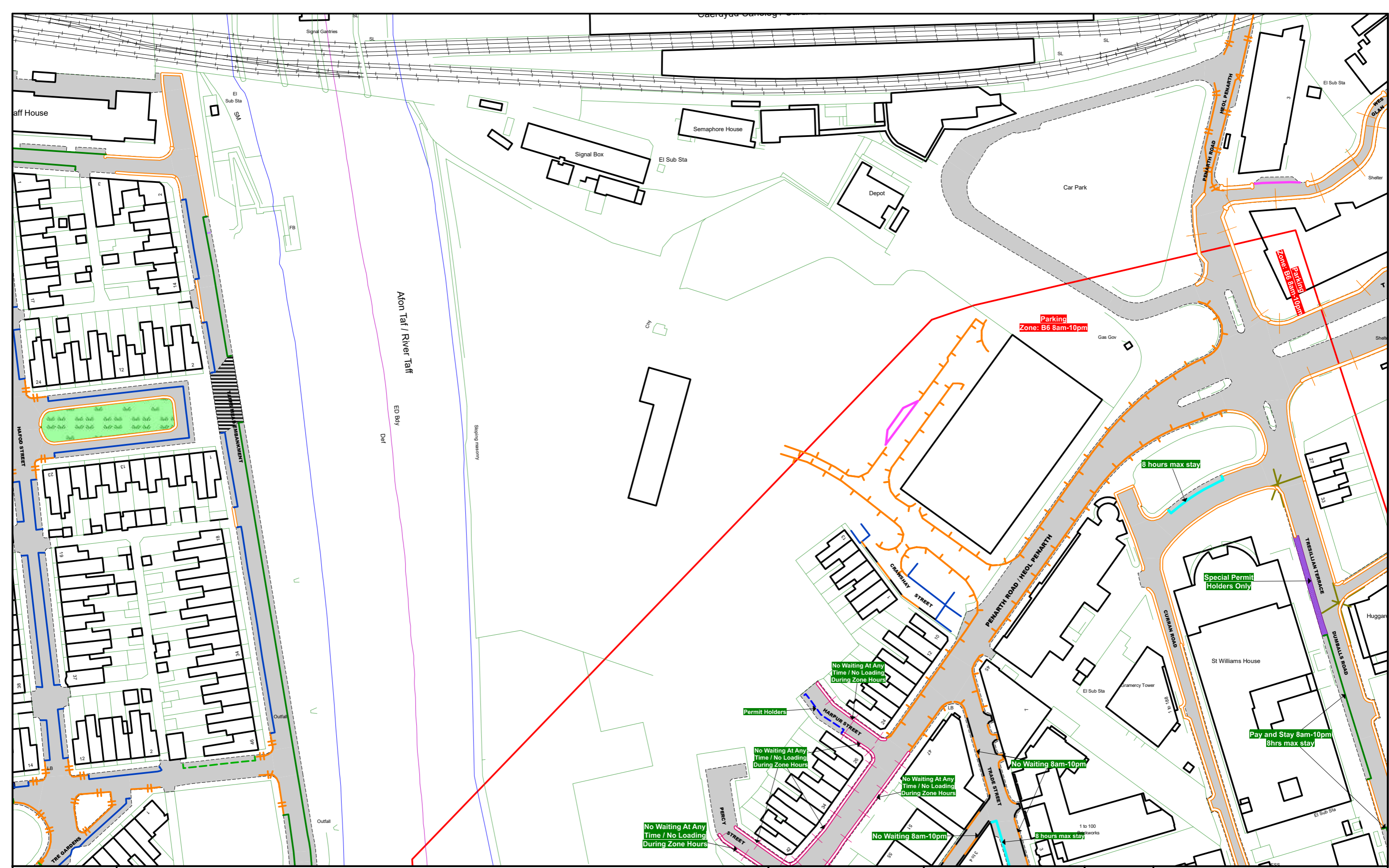
Proposed Tariffs for pay and stay (CPZ B6):

Period of Charge	Tariff
30 mins	£1.50
1 hour	£2.50
2 hours	£3.50
3 hours	£4.50
4 hours	£5.50
5 hours	£6.50
6 hours	£7.50
7 hours	£8.50
8 hours	£10.00

Details of the proposals and plans showing the location and extent of the proposed restrictions are available at [www.cardiff.gov.uk/trafficorders](http://www.cardiff.gov.uk/trafficorders). In addition you can obtain copies of the same by sending an email request to [roadtrafficorderobjections@cardiff.gov.uk](mailto:roadtrafficorderobjections@cardiff.gov.uk) or by making a written request to the address below.

Any objections and other representations relating to the orders must be submitted in writing on or before 3<sup>rd</sup> July 2026 or by email to [roadtrafficorderobjections@cardiff.gov.uk](mailto:roadtrafficorderobjections@cardiff.gov.uk) and must contain the grounds on which you object. Correspondence may be disclosed as required by the Freedom of Information Act 2000.

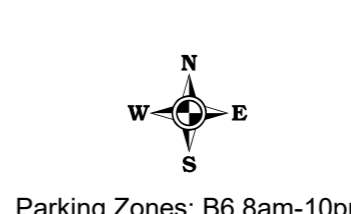
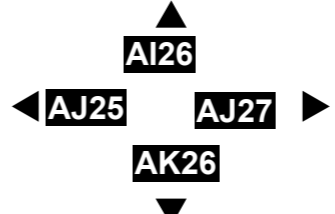
The Council welcomes correspondence in English and Welsh and we will ensure that we communicate with you in the language of your choice, whether that's English, Welsh or bilingual as long as you let us know which you prefer. Corresponding in Welsh will not lead to any delay. This document is available in Welsh/Mae'r ddogfen hon ar gael yn Gymraeg.



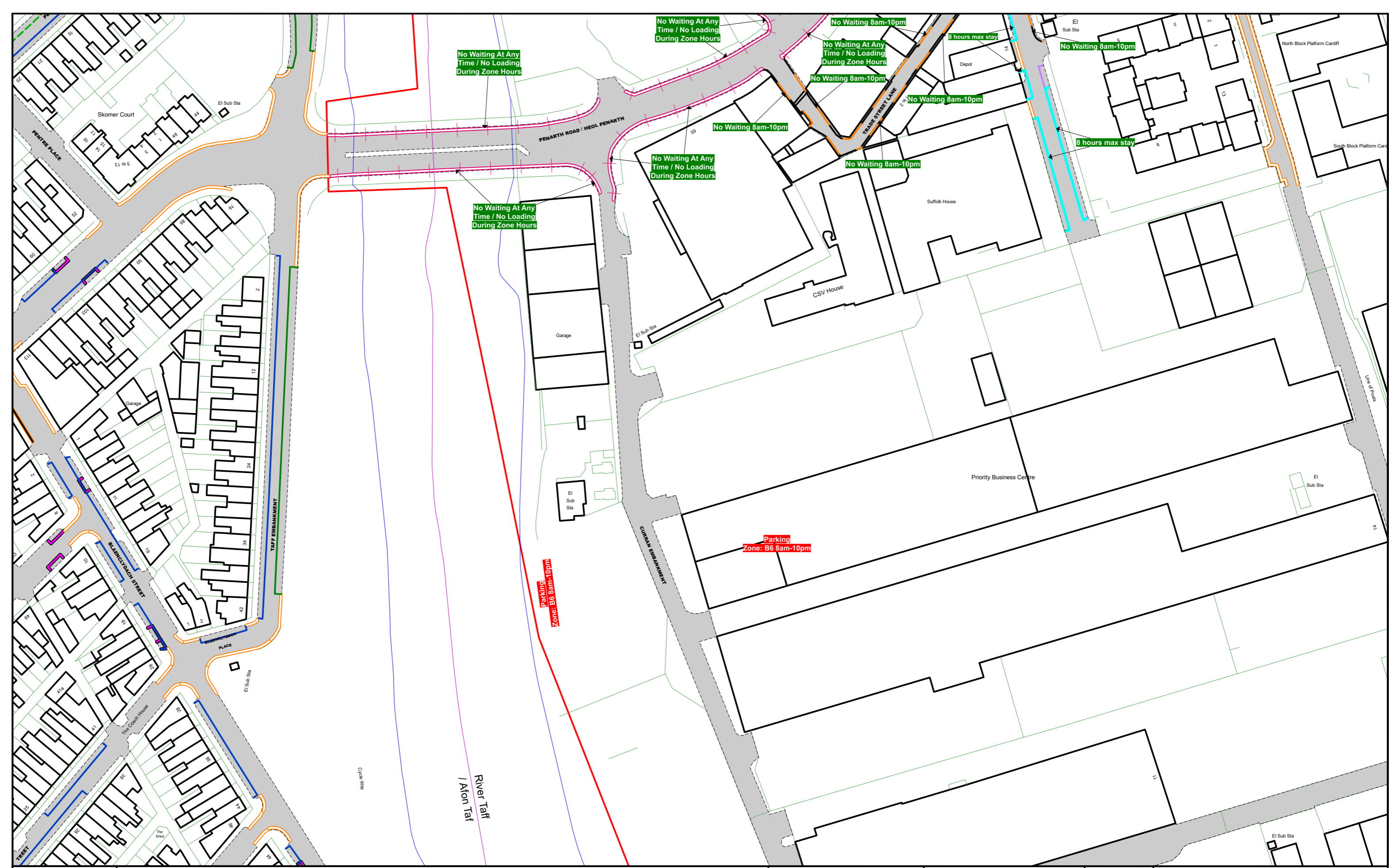
**THE COUNTY COUNCIL OF THE CITY AND COUNTY OF CARDIFF  
(PROHIBITIONS AND RESTRICTIONS OF STOPPING, WAITING, LOADING  
AND STREET PARKING PLACES) (CONSOLIDATION) ORDER 2024**

**NOTE: SEE MAP SCHEDULE LEGEND FOR RESTRICTIONS DISPLAYED**

This map is reproduced from Ordnance Survey material with the permission of Ordnance Survey on behalf of the Controller of Her Majesty's Stationery Office © Crown Copyright. Unauthorised reproduction infringes Crown copyright and may lead to prosecution or civil proceedings. Cardiff County Licence No: AC0000816513 2026



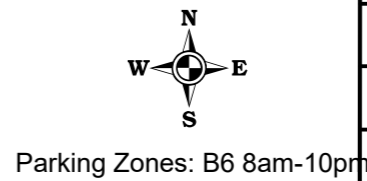
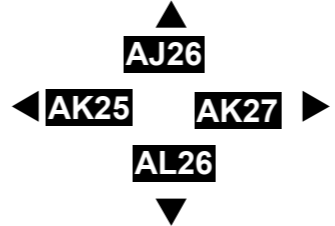
<b>SCALE</b>	1 : 1250	<b>@ A3</b>
<b>DATE</b>		
<b>MAP</b>	Tile Ref: AJ26	
<b>REVISION</b>	DRAFT	



**THE COUNTY COUNCIL OF THE CITY AND COUNTY OF CARDIFF  
(PROHIBITIONS AND RESTRICTIONS OF STOPPING, WAITING, LOADING  
AND STREET PARKING PLACES) (CONSOLIDATION) ORDER 2024**

**NOTE: SEE MAP SCHEDULE LEGEND FOR RESTRICTIONS DISPLAYED**

This map is reproduced from Ordnance Survey material with the permission of Ordnance Survey on behalf of the Controller of Her Majesty's Stationery Office © Crown Copyright. Unauthorised reproduction infringes Crown copyright and may lead to prosecution or civil proceedings. Cardiff County Licence No: AC0000816513 2026



<b>SCALE</b>	1 : 1250	<b>@ A3</b>
<b>DATE</b>		
<b>MAP</b>	Tile Ref: AK26	
<b>REVISION</b>	DRAFT	










## MAP LEGEND / CHWEDL MAP

### Mathau Gorchymyn / Order Types

	Man Parcio Bws / Bus Parking Place		Dim stopio ar droed/ymyl/ No Stopping on Footway/ Verge		Gwahardd Stopio / Prohibition of Stopping
	Blwch Safle Bws / Bus Stop Box		Dim aros / Dim llwytho ar Adegau Penodol / No Waiting / No Loading at Specified Times		Gwahardd Aros/Stopio ar Ymylon y Glaswellt / Prohibition of Waiting/Stopping on Grass Verges
	Man Parcio Llogi Beiciau / Cycle Hire Parking Place		Dim aros ar unrhyw adeg / No Waiting At Any Time		Deiliaid trwydded perswyl yn unig / Resident Permit Holders Only
	Deiliaid bathodyn anabledd yn unig / Disabled Badge Holders Only		Dim Aros ar unrhyw adeg / Dim Llwytho ar adegau penodol / No Waiting At Any Time / No Loading at Specified Times		Tîm Ardal Parcio â Thrwydded / Resident Permit Parking Area
	11 : Deiliaid bathodyn anabledd yn unig / Disabled Badge Holders Only		Dim aros ar unrhyw adeg / Dim llwytho ar Unrhyw Adeg / No Waiting At Any Time / No Loading At Any Time		Parth Parcio Cyfyngedig / Restricted Parking Zone
	X665 : Deiliaid bathodyn anabledd yn unig 8am-8pm terfyn aros 4awr dim dychwelyd 2awr / Disabled Badge Holders Only 8am-8pm 4hrs max stay No rtn 2hrs		Dim aros ar amseroedd penodol / No Waiting at Specified Times		Ysgol Cadwch yn Glir / School Keep Clear
	Gwefru Cerbydau Trydan Yn Unig / Electric Vehicle Charging Only		NW2 : Dim aros 8am-10pm / No Waiting 8am-10pm		Defnydd a Rennir (Deiliaid Bathodyn Anabl a Cherbydau Nwyddau) / Shared Use (Disabled Badge Holders and Goods Vehicle Loading)
	Llwytho i Gerbydau Nwyddau Yn unig / Goods Vehicle Loading Only		NW4 : Dim aros 8am-6.30pm / No Waiting 8am-6.30pm		Defnydd a Rennir (Llwytho Cerbydau Nwyddau ac Aros Cyfyngedig) / Shared Use (Goods Vehicle Loading and Limited Waiting)
	Ardal Llwytho i Gerbydau Nwyddau Yn Unig / Goods Vehicle Loading Only Area		NW3 : Dim aros 8am-6pm / No Waiting 8am-6pm		Defnydd a Rennir (Deiliaid Trwyddedau ac Aros Cyfyngedig) / Shared Use (Permit Holders and Limited Waiting)
	Aros Cyfyngedig / Limited Waiting		Talu ac Aros / Pay and Stay		Defnydd a Rennir (Deiliaid Trwyddedau a Thalu i Barcio) / Shared Use (Permit Holders and Payment Parking)
	Llwytho yn unig / Loading Only		Llinellau Igam-ogam Croesfan Cerddwyr / Pedestrian Crossing Zigzags		Defnydd a Rennir (Parcio i Breswylwyr ac Aros Cyfyngedig) / Shared Use (Resident Parking and Limited Waiting)
	Dim llwytho ar Adegau Penodol / No Loading at Specified Times		Parth cerddwyr / Pedestrian Zone		Defnydd a Rennir (Taxis a Llwytho Cerbydau Nwyddau) / Shared Use (Taxi and Goods Vehicle Loading)
			Deiliaid trwydded yn unig / Permit Holders Only		



## MAP LEGEND / CHWEDL MAP

-  **Lle parcio arbennig / Special Parking Place**
-  **Deiliaid Trwyddedau Arbennig Yn Unig / Special Permit Holders Only**
-  **Safle Taxis / Taxi Rank**

## Schedule

The County Council of The City and County of Cardiff (Prohibitions And Restrictions Of Stopping, Waiting, Loading and Street Parking Places) (Consolidation) Order 2024 (Amendment No 80) Order 2026 proposes to:

- 1) Prevent you from waiting at any time with no loading during Zone Hours (8am – 10pm) in:
  - a) Penarth Road on its north west side from a point 7 metres east of its junction with Taff Embankment to its junction with Harpur Street and on its south east side from a point 10 metres east of Taff Embankment to a point 25 metres south west of its junction with Trade Street
  - b) Percy Street on its south west side from its junction with Penarth Road for a distance of 26 metres north west and on its north east side from the same junction for a distance of 24.5 metres north west
  - c) Harpur Street on its south west side from its junction with Penarth Road for a distance of 15 metres north west and on its north east side from its junction with Penarth Road for a distance of 33.5 metres north west
  - d) Curran Embankment on its east side, from its junction with Penarth Road for a distance of 21 metres south and on its west side from the same junction for a distance of 11 metres south
- 2) Prevent you from waiting between the hours of 8am – 10pm in:
  - a) Trade Street on its south west side from a point 8.5 metres south east of its junction with Penarth Road to its junction with Trade Street Lane and on its north east side from a point 17 metres south west of its junction with Penarth Road for a distance of 84 metres south west
  - b) Trade Street Lane on its both sides from its junction with Trade Street throughout its length
- 3) Establish a shared use Zone Permit (B6) Holders and Pay & Stay bay with 8 hours maximum stay (no return within 2 hours) operational between 8am -10pm in:
  - a) Trade Street on its north east side from a point 103 metres south east of its junction with Penarth Road for a distance of 51 metres south east, and on its south west side from its junction with Trade Street Lane for a distance of 31 metres south east, and from a point 40 metres south east of the same junction for a distance of 11 metres south east, and from a point 57 metres south east of its junction with Trade Street Lane for a distance of 47 metres south east
  - b) Curran Road on its north side from a point 20 metres west of its junction with Tresillian Terrace for a distance of 24 metres south west
- 4) Establish a Pay and Stay parking bay with 8 hours maximum stay (no return within 2 hours) operational between the hours of 8am – 10pm in:
  - a) Dumballs Road on its south west side from a point 58.5 metres south east of its junction with Curran Road for a distance of 56 metres south east, and from a point 133.5 metres south east of the same junction for a distance of 74 metres south east, and from a point 225.5 metres south east of the same junction for a distance of 20 metres south east, and from a point 258.5 metres south east of its junction with Curran Road for a distance of 11 metres south east, and from a point 278 metres south east of the same junction for a distance of 18.5 metres south east, and from a point 311.5 metres south east of the same junction for a distance of 78.5 metres south east
  - b) Canal Parade on its north west side from a point 15 metres north east of its junction with Dumballs Road for a distance of 41 metres north east, and from a point 75 metres north east of the same junction for a distance of 5.5 metres north east, and from a point 110.5 metres north east of the same junction for a distance of 31 metres north east & on its south east side from a point 72 metres north east of its junction with Dumballs Road for a distance of 38 metres north east, & on its north east side from a point 82.5 metres south east of its closed end for a distance of 99 metres south east, and from a point 10 metres south east of its closed end for a distance of 41 metres south east, & on its south west

side from a point 10 metres south east of Canal Parade closed end for a distance of 18.5 metres south east, and from a point 71 metres south east of its closed end for a distance of 63 metres south east, and from a point 155.5 metres south east of its closed end for a distance of 21.5 metres south east

- 5) Prevent you from waiting at any time in:
  - a) Tresillian Terrace on its south west side from its junction with Curran Road for a distance of 20 metres south east
  - b) Dumballs Road on its north east side from a point 17 metres south east of its junction with Hansen Street to its junction with Canal Parade, & on its south west side from a point 207 metres south east of its junction with Curran Road for a distance of 15.5 metres south east, and from a point 245.5 metres south east of the same junction for a distance of 15.5 metres south east, and from a point 269.5 metres south east of the same junction for a distance of 8.5 metres south east, and from a point 296.5 metres south east of the same junction for a distance of 15 metres south east
  - c) Canal Parade on its north east side from a point 80.5 metres north east of its junction with Dumballs Road for a distance of 30 metres north east and on its south west side from a point 28 metres south east of Canal Parade closed end for a distance of 43.5 metres south east
- 6) Establish a Permit Holders Only Bay operational at all times in Harpur Street on its south west side from a point 15 metres north west of its junction with Penarth Road for a distance of 20 metres north west
- 7) Establish a Special Permit Holders Only bay (currently proposed for non-local buses and rail replacement buses) in Tresillian Terrace on its south west side from a point 20 metres south east of its junction with Curran Road for a distance of 38.5 metres south east
- 8) Revoke the Disabled Person's Parking Place located in Harpur Street on its south west side from a point 15 metres north west of its junction with Penarth Road for a distance of 6.6 metres north west

#### Exemptions

In respect of Paragraph 1

- a) boarding and alighting a vehicle
- b) loading and unloading of goods between the hours of 12am – 7:59am and 10:01pm – 11:59pm
- c) essential services and funerals
- d) for a maximum period of three hours between the hours of 12am – 7:59am and 10:01pm – 11:59pm, vehicles when displaying a “Disabled Badge” and a “Parking Disc” and being used for the conveyance of disabled persons

In respect of paragraphs 2, 5, and 6:-

- a) boarding and alighting a vehicle
- b) loading and unloading of goods
- c) essential services and funerals
- d) for a maximum period of three hours vehicles when displaying a “Disabled Badge” and a “Parking Disc” and being used for the conveyance of disabled persons

In respect of paragraphs 3 and 4:-

- a) boarding and alighting a vehicle
- b) loading and unloading of goods
- c) essential services and funerals
- d) vehicles when displaying a “Disabled Badge” and a “Parking Disc” and being used for the conveyance of disabled persons

In respect of paragraph 7 -

- a) boarding and alighting a vehicle
- b) essential services and funerals

Dated this 12th June 2026  
Director of Governance & Legal Services, County Hall, Atlantic Wharf, Cardiff, CF10 4UW