

The County Council of The City and County of Cardiff (Prohibitions and Restrictions of Stopping, Waiting, Loading and Street Parking Places) (Consolidation) Order 2024 (Amendment No 81) Order 2026

The County Council of the City and County of Cardiff in exercise of its powers under Sections 1 and 2 of the Road Traffic Regulations Act 1984, Part 6 of the Traffic Management Act 2004 as amended, The Civil Enforcement of Road Traffic Contraventions (General Provisions) (Wales) Regulations 2013, The Civil Enforcement of Parking Contraventions (City and County of Cardiff) Designation Order 2010, and of all other enabling powers proposes making an Order the general effect of which will be to:

- 1) prevent you from waiting and loading at any time in Olympian Drive on its south west side from a point 27 metres north of its junction with International Drive to a point 65 metres south of Watkiss Way (including the turning head), and on its north east side from a point 27 metres north of its junction with International Drive to a point 28 metres south of Empire Way, and on both sides of its roundabout junction with Empire Way

Exemptions for the lengths of road set out in the Schedule below will be permitted for the following reasons:-

- a) boarding and alighting a vehicle
- b) essential services and funerals

- 2) Limit waiting to 20 minutes maximum stay (no return within 1 hour) in Olympian Drive on its east side from a point 37 metres south of Empire Way for a distance of 39 metres south

Exemptions for the lengths of road set out in bulletpoint 2 will be permitted for the following reasons:-

- a) boarding and alighting a vehicle
- b) loading and unloading of goods
- c) essential services and funerals
- d) vehicles when displaying a "Disabled Badge" and a "Parking Disc" and being used for the conveyance of disabled persons

- 3) Establish a Disabled Persons Parking Place in Olympian Drive on its east side from a point 28 metres south of Empire Way for a distance of 9 metres south

This notice forms part of a larger proposal. Details of the proposal and plan showing the location and extent of the proposed restrictions (including any exemptions applicable) are available at www.cardiff.gov.uk/trafficorders or by scanning the QR code below. In addition you can obtain copies of the same by sending an email request to roadtrafficorderobjections@cardiff.gov.uk or by making a written request to the address below.

Any objections and other representations relating to the order must be submitted in writing on or before 26th June 2026 or by email to roadtrafficorderobjections@cardiff.gov.uk. In the case of an objection this must contain a statement of the grounds on which the objection is made. Correspondence may be disclosed as required by the Freedom of Information Act 2000.

This Notice may be removed after the objection period ends. The Council welcomes correspondence in English and Welsh and we will ensure that we communicate with you in the language of your choice, whether that's English, Welsh or bilingual as long as you let us know which you prefer. Corresponding in Welsh will not lead to any delay. This document is available in Welsh/Mae'r ddogfen hon ar gael yn Gymraeg.

Dated this 5th June 2026

Legal Services, County Hall, Atlantic Wharf, Cardiff CF10 4UW

The County Council of The City and County of Cardiff (Prohibitions and Restrictions of Stopping, Waiting, Loading and Street Parking Places) (Consolidation) Order 2024 (Amendment No 81) Order 2026

The County Council of the City and County of Cardiff in exercise of its powers under Sections 1 and 2 of the Road Traffic Regulations Act 1984, Part 6 of the Traffic Management Act 2004 as amended, The Civil Enforcement of Road Traffic Contraventions (General Provisions) (Wales) Regulations 2013, The Civil Enforcement of Parking Contraventions (City and County of Cardiff) Designation Order 2010, and of all other enabling powers proposes making an Order the general effect of which will be to:

- 1) prevent you from waiting and loading at any time in the lengths of road in the Schedule below.
- 2) Establish Bus Parking Place with 20 minutes maximum stay (no return within 1 hour) in Olympian Drive Service Road on its north east side from a point 60 metres south of its junction with International Drive for a distance of 34 metres south

Exemptions for the lengths of road set out in the notice will be permitted for the following reasons:-

- a) boarding and alighting a vehicle
- b) essential services and funerals

This notice forms part of a larger proposal. Details of the proposal and plan showing the location and extent of the proposed restrictions (including any exemptions applicable) are available at www.cardiff.gov.uk/trafficorders or by scanning the QR code below. In addition you can obtain copies of the same by sending an email request to roadtrafficorderobjections@cardiff.gov.uk or by making a written request to the address below.

Any objections and other representations relating to the order must be submitted in writing on or before 26th June 2026 or by email to roadtrafficorderobjections@cardiff.gov.uk. In the case of an objection this must contain a statement of the grounds on which the objection is made. Correspondence may be disclosed as required by the Freedom of Information Act 2000.

This Notice may be removed after the objection period ends. The Council welcomes correspondence in English and Welsh and we will ensure that we communicate with you in the language of your choice, whether that's English, Welsh or bilingual as long as you let us know which you prefer. Corresponding in Welsh will not lead to any delay. This document is available in Welsh/Mae'r ddogfen hon ar gael yn Gymraeg.

Schedule

- 1) Olympian Drive southwestern access road on its both sides from its junction with Olympian Drive for a distance of 58 metres south west (including the pedestrian crossing island)
- 2) Olympian Drive Service Road on its north east side from a point 30 metres south of its junction with International Drive for a distance of 30 metres south, and from a point 94 metres south of its junction with International Drive for a distance of 35 metres south, and on its south west side from a point 51 metres south of its junction with International Drive for a distance of 58 metres south

Dated this 5th June 2026

Legal Services, County Hall, Atlantic Wharf, Cardiff CF10 4UW

The County Council of The City and County of Cardiff (Prohibitions and Restrictions of Stopping, Waiting, Loading and Street Parking Places) (Consolidation) Order 2024 (Amendment No 81) Order 2026

The County Council of the City and County of Cardiff in exercise of its powers under Sections 1 and 2 of the Road Traffic Regulations Act 1984, Part 6 of the Traffic Management Act 2004 as amended, The Civil Enforcement of Road Traffic Contraventions (General Provisions) (Wales) Regulations 2013, The Civil Enforcement of Parking Contraventions (City and County of Cardiff) Designation Order 2010, and of all other enabling powers proposes making an Order the general effect of which will be to:

- 1) prevent you from waiting and loading at any time in the lengths of road in the Schedule below.

Exemptions for the lengths of road set out in the Schedule below will be permitted for the following reasons:-

- a) boarding and alighting a vehicle
 - b) loading and unloading of goods
 - c) essential services and funerals
 - d) for a maximum period of three hours vehicles when displaying a "Disabled Badge" and a "Parking Disc" and being used for the conveyance of disabled persons
- 2) Establish a Goods Vehicle Loading bay with 1 hour maximum stay (no return within 1 hour) in International Drive on its north west side of the roundabout junction with Ferry Road (within the layby) for a distance of 13 metres, and on the northern side of the roundabout adjacent to the sewage pumping station

Exemptions for the lengths of road set out in bulletpoint 2 above will be permitted for the following reasons:-

- a) boarding and alighting a vehicle
- b) essential services and funerals

This notice forms part of a larger proposal. Details of the proposal and plan showing the location and extent of the proposed restrictions (including any exemptions that may apply) are available at www.cardiff.gov.uk/trafficorders or by scanning the QR code below. In addition you can obtain copies of the same by sending an email request to roadtrafficorderobjections@cardiff.gov.uk or by making a written request to the address below.

Any objections and other representations relating to the order must be submitted in writing on or before 26th June 2026 or by email to roadtrafficorderobjections@cardiff.gov.uk. In the case of an objection this must contain a statement of the grounds on which the objection is made. Correspondence may be disclosed as required by the Freedom of Information Act 2000.

This Notice may be removed after the objection period ends. The Council welcomes correspondence in English and Welsh and we will ensure that we communicate with you in the language of your choice, whether that's English, Welsh or bilingual as long as you let us know which you prefer. Corresponding in Welsh will not lead to any delay. This document is available in Welsh/Mae'r ddogfen hon ar gael yn Gymraeg.

Schedule

- 1) Ferry Road on both sides from its junction with Campbell Drive/Cardiff Bay Retail Park to its junction with International Drive
- 2) Ferry Court on both sides from its junction with Ferry Road for a distance of 10 metres north east
- 3) Ferry Road (south west side) and International Drive (north side) access road on both sides from its junction with Ferry Road for a distance of 28 metres south west (and for the avoidance of doubt includes the pedestrian crossing island)
- 4) Empire Way on both sides throughout its length
- 5) Empire Way Access Road throughout its length (and for the avoidance of doubt includes the turning head)
- 6) International Drive on both sides throughout the length of the adopted highway including the roundabout junction with Ferry Road

Dated this 5th June 2026

Legal Services, County Hall, Atlantic Wharf, Cardiff CF10 4UW

The County Council of The City and County of Cardiff (Prohibitions and Restrictions of Stopping, Waiting, Loading and Street Parking Places) (Consolidation) Order 2024 (Amendment No 81) Order 2026

The County Council of the City and County of Cardiff in exercise of its powers under Sections 1 and 2 of the Road Traffic Regulations Act 1984, Part 6 of the Traffic Management Act 2004 as amended, The Civil Enforcement of Road Traffic Contraventions (General Provisions) (Wales) Regulations 2013, The Civil Enforcement of Parking Contraventions (City and County of Cardiff) Designation Order 2010, and of all other enabling powers proposes making an Order the general effect of which will be to

- 1) prevent you from waiting and loading at any time in the lengths of road in the Schedule below.
- 2) Establish a Goods Vehicle Loading Only bay with 1 hour maximum stay (no return within 1 hour) in Watkiss Way on its south side from a point 217 metres west of its junction with Olympian Drive for a distance of 38 metres west

Exemptions for the lengths of road set out in the notice will be permitted for the following reasons:-

- a) boarding and alighting a vehicle
- b) essential services and funerals

This notice forms part of a larger proposal. Details of the proposal and plan showing the location and extent of the proposed restrictions (including any exemptions that may apply) are available at www.cardiff.gov.uk/trafficorders or by scanning the QR code below. In addition you can obtain copies of the same by sending an email request to roadtrafficorderobjections@cardiff.gov.uk or by making a written request to the address below.

Any objections and other representations relating to the order must be submitted in writing on or before 26th June 2026 or by email to roadtrafficorderobjections@cardiff.gov.uk. In the case of an objection this must contain a statement of the grounds on which the objection is made. Correspondence may be disclosed as required by the Freedom of Information Act 2000.

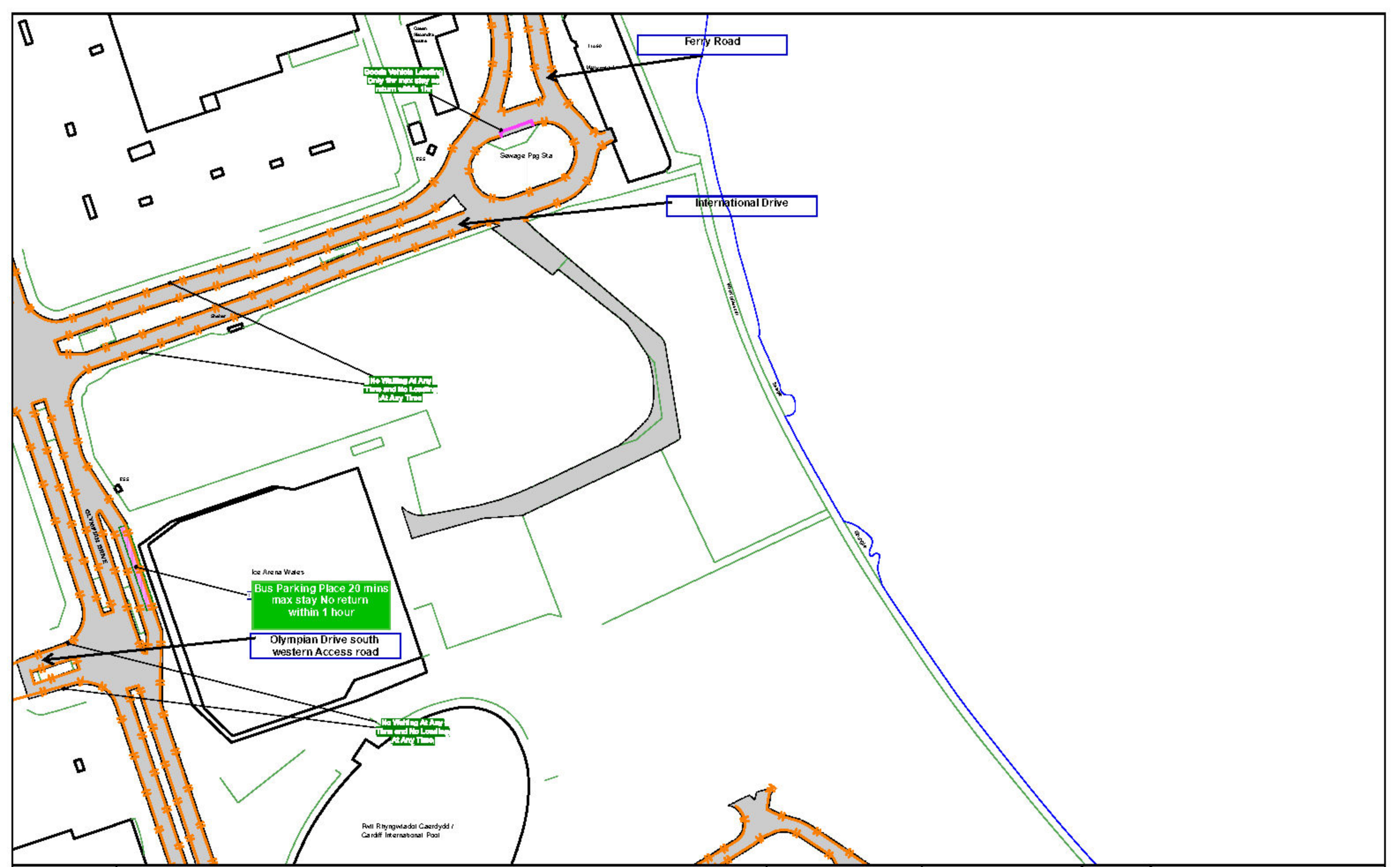
This Notice may be removed after the objection period ends. The Council welcomes correspondence in English and Welsh and we will ensure that we communicate with you in the language of your choice, whether that's English, Welsh or bilingual as long as you let us know which you prefer. Corresponding in Welsh will not lead to any delay. This document is available in Welsh/Mae'r ddogfen hon ar gael yn Gymraeg.

Schedule

- 1) Watkiss Way on its north east side from its junction with Dunleavy Drive to its junction with Olympian Drive, and on its south west side from its junction with Olympian Drive for a distance 217 metres west and from a point 255 metres west from its junction with Olympian Drive to its junction with Dunleavy Drive
- 2) Watkiss Way (northwest side) Access Road on its southeast side from its junction with Watkiss Way for a distance of 100 metres east and on its northwest side from its junction with Watkiss Way for a distance of 83 metres east

Dated this 5th June 2026

Legal Services, County Hall, Atlantic Wharf, Cardiff CF10 4UW



Ferry Road

International Drive

Goods Vehicle Loading
Only for max stay
return within 1hr

Sewage Ppg Sta

No Waiting At Any
Time and No Loading
At Any Time

Ice Arena Wales
Bus Parking Place 20 mins
max stay No return
within 1 hour

Olympian Drive south
western Access road

No Waiting At Any
Time and No Loading
At Any Time

Rwtl Rhyngwladol Caerdydd /
Cardiff International Pool



ALLWEDD MAP / MAP LEGEND

Mathau Gorchymyn/Order Types

	Man Parcio Bws Bus Parking Place		Dim Stopio ar Droedffordd/Ymylon No Stopping on Footway/Verge		Gwahardd Stopio Prohibition of Stopping
	Blwch Safle Bws Bus Stop Box		Dim aros /Dim Llwytho ar Adegau Penodol No Waiting /No Loading at Specified Times		Gwahardd Aros/Stopio ar Ymylon y Glaswellt Prohibition of Waiting/Stopping on Grass Verges
	Maes parcio Car Park		Dim aros ar unrhyw adeg No Waiting At Any Time		Deiliaid trwydded perswyl yn unig Resident Permit Holders Only
	Man Parcio Llogi Beiciau Cycle Hire Parking Place		Dim Aros ar unrhyw adeg / Dim Llwytho ar adegau penodol No Waiting At Any Time /No Loading at Specified Times		Parth Parcio Cyfyngedig Restricted Parking Zone
	Deiliaid bathodyn anabled yn unig Disabled Badge Holders Only		Dim Aros ar unrhyw Adeg /Dim Llwytho 8am-10pm No Waiting At Any Time /No Loading 8am-10pm		Ysgol Cadwch yn Glir School Keep Clear
	Defnydd Deuol (Deiliaid Bathodyn Anabl a Cherbydau Nwyddau) Dual Use (Disabled Badge Holders & Goods Vehicles)		Dim aros ar unrhyw adeg /Dim Llwytho ar Unrhyw Adeg No Waiting At Any Time /No Loading At Any Time		Defnydd a Rennir (Deiliaid Trwydded ac Aros Cyfyngedig yn Ystod Oriau'r Parth) Shared Use (Permit Holders / Limited Waiting During Zone Hours)
	Defnydd Deuol (Llwytho Cerbydau Nwyddau ac Aros Cyfyngedig) Dual Use (Goods Vehicle Loading & Limited Waiting)		Dim Aros Ar Unrhyw Adeg / Dim Llwytho Yn Ystod Oriau'r Parth No Waiting At Any Time / No Loading During Zone Hours		Defnydd a Rennir (Deiliaid Trwydded / Talu ac Aros yn Ystod Oriau'r Parth) Shared Use (Permit Holders / Pay & Stay During Zone Hours)
	Gwefru Cerbydau Trydan Yn Unig Electric Vehicle Charging Only		Dim aros ar amseroedd penodol No Waiting at Specified Times		Defnydd a Rennir (Deiliaid Trwyddedau ac Aros Cyfyngedig) Shared Use (Permit Holders and Limited Waiting)
	Llwytho i Gerbydau Nwyddau Yn unig Goods Vehicle Loading Only		Dim Aros Yn Ystod Oriau'r Parth No Waiting During Zone Hours		Defnydd a Rennir (Tacsis a Llwytho Cerbydau Nwyddau) Shared Use (Taxi and Goods Vehicle Loading)
	Ardal Llwytho i Gerbydau Nwyddau Yn Unig Goods Vehicle Loading Only Area		Dim Aros/Llwytho Yn Ystod Oriau'r Parth No Waiting/Loading During Zone Hours		Defnydd a Rennir ac Aros Cyfyngedig Shared Use Limited Waiting
	Aros Cyfyngedig Limited Waiting		Llinellau Igam-ogam Croesfan Cerddwyr Pedestrian Crossing Zigzags		Defnydd a Rennir Talu ac Aros Shared Use Pay and Stay
	Llwytho yn unig Loading Only		Parth cerddwyr Pedestrian Zone		Man Parcio Arbennig Special Parking Place
	Dim Llwytho ar Adegau Penodol No Loading at Specified Times		Deiliaid trwydded yn unig Permit Holders Only		Deiliaid Trwyddedau Arbennig Yn Unig Special Permit Holders Only
			Ardal Parcio Trwyddedau Permit Parking Area		Safle Tacsis Taxi Rank



ALLWEDD MAP / MAP LEGEND

Parth Parcio / Parking Zone



Parth Parcio / Parking Zone