

RECYCLING AND WASTE IN YOUR BUILDING

GREEN RECYCLING BIN

Blue re-usable sack, green bin

No food waste/black bags



WHAT CAN GO IN THE BLUE RE-USABLE SACK?



WINE BOTTLES /
BEER BOTTLES / CANS

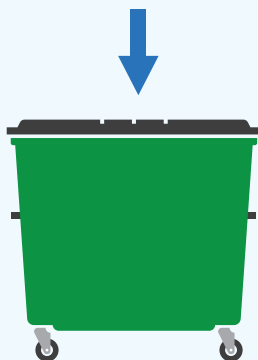
SOFT DRINKS BOTTLES/
WATER BOTTLES

WASTE PAPER

SHAMPOO /
SHOWER GEL BOTTLES

ENVELOPES

CARDBOARD



FOOD WASTE

Caddy liners, brown bins

Fill it, tie it, bin it

WHAT CAN GO IN THE FOOD WASTE CADDY?



PIZZA

CHEWING GUM

TEABAGS / COFFEE GROUNDS

EGGSHELLS

FRUIT AND VEG PEELINGS /
AVOCADO SKIN AND SEED

LEFTOVERS

BREAD

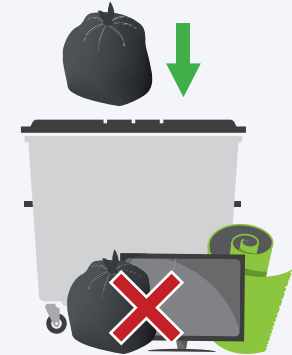


GENERAL WASTE

Any type of bag, or loose waste
(no green bags)

Please place all waste into
the bins provided

Please do not dump bags or
bulky items in bin stores



BULKY ITEMS

Arrange a bulky collection on the
Cardiff Gov app or by visiting
www.cardiff.gov.uk/bulkywaste

Do not place bulky items in bin
stores that have not been
booked in.



ONLY RECYCLING AND WASTE PRESENTED CORRECTLY WILL BE COLLECTED. YOUR RESPONSIBLE PARTY E.G MANAGEMENT COMPANY MAY NEED TO PAY FOR AN ADDITIONAL COLLECTION

All bags of waste must fit within bins, where bins are provided. Bins must contain the correct materials.

For queries about waste services, visit

www.cardiff.gov.uk/recycling

or ask questions at www.cardiff.gov.uk/askbobi

You can see how we calculate the number of bins required at flats at www.cardiff.gov.uk/wasteplanning. If you think you do not have the correct allocation, speak to your responsible party e.g. management company. Bins are provided at a cost



Scan this QR code for a
full A Z guide of how to
recycle different items.

