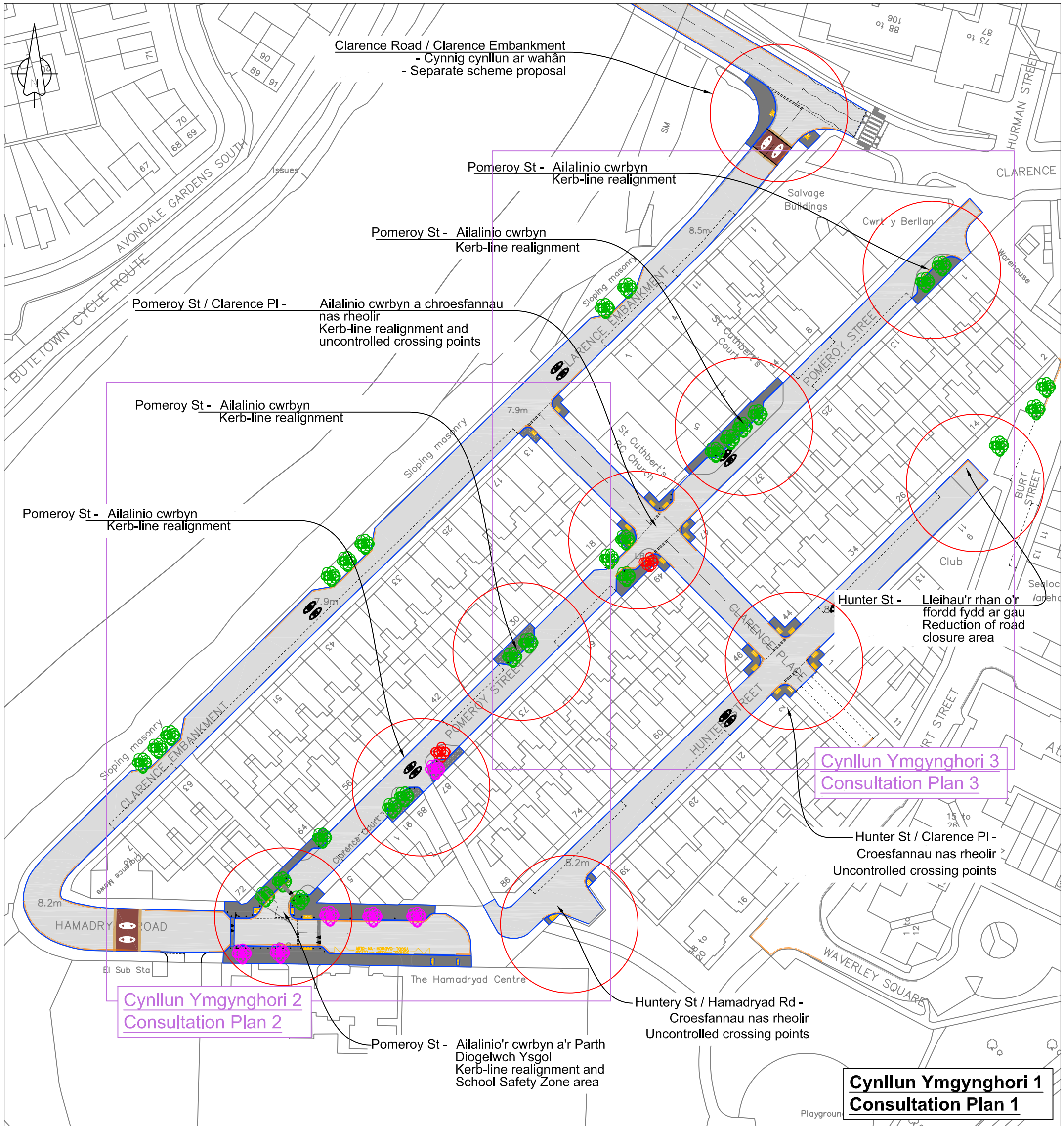


**Yn dilyn ymgynghoriadau diweddar ar gynnig rheoli traffig, mae'r Cyngor yn paratoui i weithredu'r cynllun rheoli traffig yn seiliedig ar y cynllun isod.**



CARDIFF  
CAERDYDD

Mae pecyn ymgynghori llawn ar gael yn [www.caerdydd.gov.uk/traffic-consultations](http://www.caerdydd.gov.uk/traffic-consultations). Fel arall, e-bostiwch [TransportProjects@caerdydd.gov.uk](mailto:TransportProjects@caerdydd.gov.uk) neu ffoniwch 029 2087 3298 i ofyn am gopi papur.



[Ar gyfer cynllun ymgynghori 2 a 3 - cyfeiriwch at www.caerdydd.gov.uk/projectautrafnidiaeth](http://www.caerdydd.gov.uk/projectautrafnidiaeth) a dewiswch y ddolen Gweld Ymgynghoriadau a'r ymgynghoriad perthnasol  
For Consultation Plan 2 & 3 - please refer to [www.cardiff.gov.uk/transportprojects](http://www.cardiff.gov.uk/transportprojects) and select view consultations link and the relevant consultation

<b>Allwedd / Key:</b>	Cadw coeden / Tree to remain	Coeden Newydd / New Tree	Cael gwared ar goeden / Tree removal	Gwaith ar y droedffordd / Footway works	Arwyddion 20mya / 20mph signage
-----------------------	------------------------------	--------------------------	--------------------------------------	---	---------------------------------

**Following the recent consultation on a traffic management proposal, the Council is preparing to implement the scheme based on the plan shown above.**

A full consultation pack is available at [www.cardiff.gov.uk/traffic-consultations](http://www.cardiff.gov.uk/traffic-consultations). Alternatively, please e-mail [TransportProjects@cardiff.gov.uk](mailto:TransportProjects@cardiff.gov.uk), or telephone 029 2087 3298 to request a paper copy.