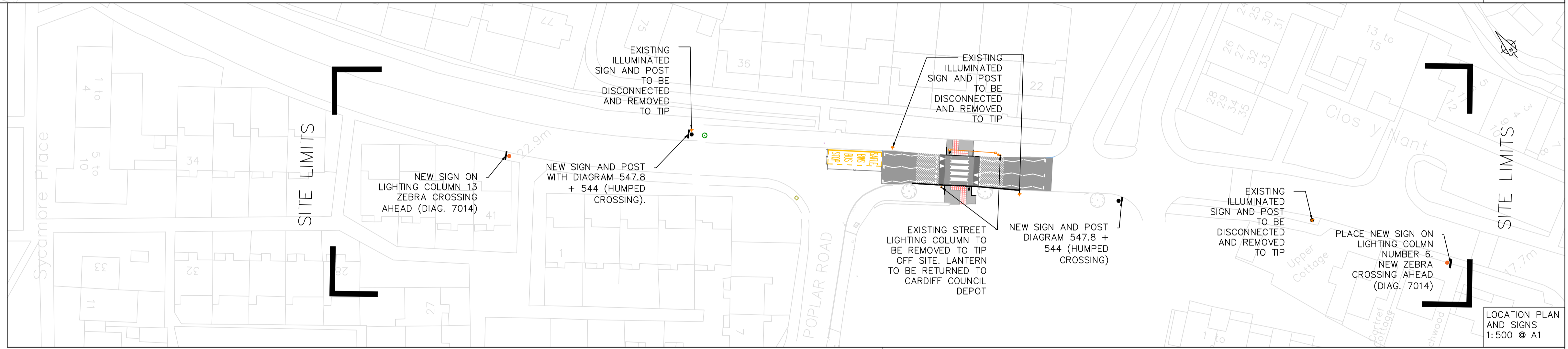


GENERAL ARRANGEMENT
1:100 @ A1

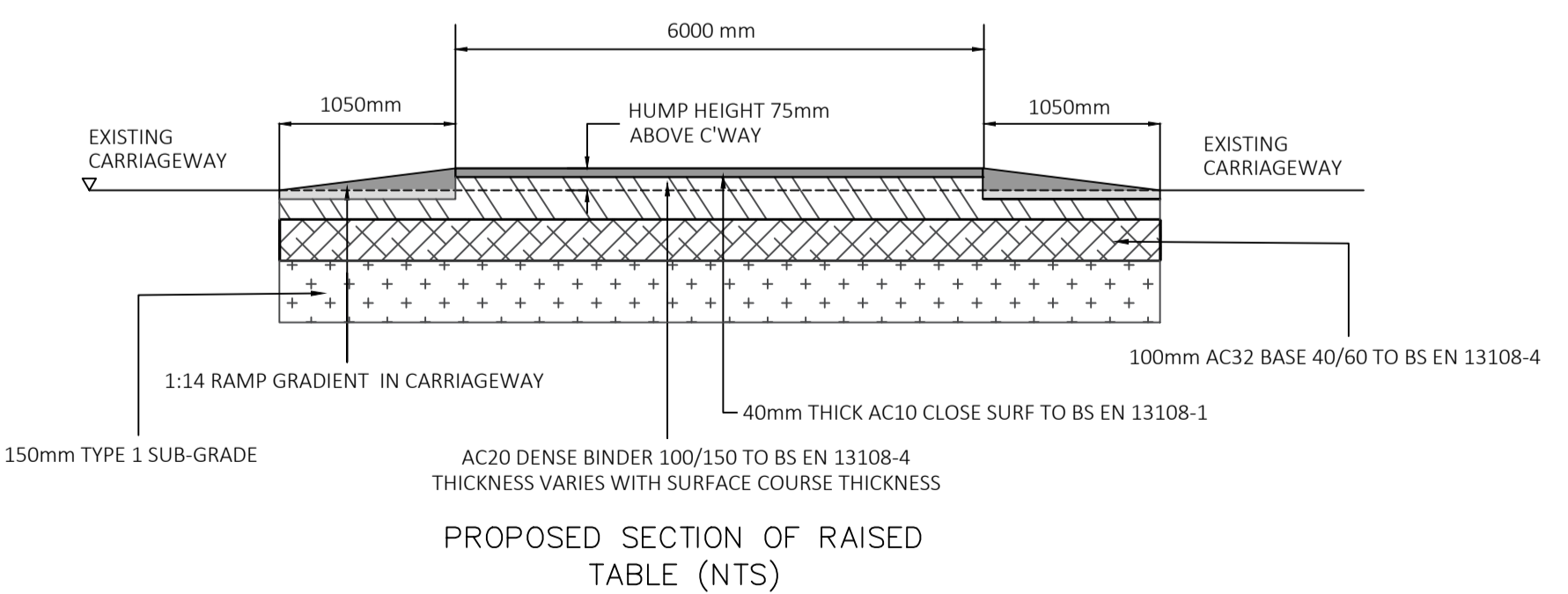
- KEY**
- EXISTING CARRIAGEWAY TO BE TAKEN UP 350mm AND RESURFACED WITH 150mm TYPE 1 SUB-BASE, 100mm AC32 BASE COURSE 40/60 TO BS EN 13108-4, 60mm AC20 DENSE BINDER COURSE 100/150 TO BS EN 13108-4, 40mm AC10 DENSE SURFACE COURSE 100/150.
 - PLANE AND RESURFACE 40MM WITH AC10 CLOSE SURF TO BS EN 13108-1 WITH PMB 75/130-75 TO BS EN 14023.
 - 25mm AC6 DENSE SURFACE COURSE 100/150 TO BS EN 13108-4, 50mm AC20 DENSE BINDER 100/150 TO BS EN 13108-4, 150mm TYPE 2 SUB-BASE
 - PROPOSED CONCRETE GULLY WITH D400 COVER AND FRAME
 - PROPOSED 150mm DRAINAGE PIPE TO BE INSTALLED LINKING PROPOSED GULLY TO EXISTING GULLY OUTLET WITH A 'Y PIECE' AND BAND SEAL CONNECTIONS
 - PROPOSED BELISHA BEACON REFER TO STREET LIGHTING DESIGN FOR SPECIFICATION
 - PROPOSED BLISTER TACTILE PAVING 400x400x65mm COLOUR: RED LAID ON 30mm SHARP SAND ON 100mm TYPE 2 SUBBASE SHW CLAUSE 803. JOINTS BRUSHED WITH KIND DRIED SHARP SAND SURROUNDED BY PRECAST CONCRETE KERBS TYPE EF 255mm
 - PROPOSED LEVELS
 - PROPOSED SIGN(S) AS ANNOTATED. SIGN MUST BE SET OUT BY CCC SITE SUPERVISOR OR PROJECT MANAGER ON SITE. SIGN FACE MUST BE AT LEAST 450MM FROM FACE OF KERB. REFER TO SIGN DETAILS
 - TOPSOIL TO BE PLACED AT BACK OF KERB AND GRASS SEEDED
 - PROPOSED SIGN(S) AS ANNOTATED. ON EXISTING POST/LIGHTING COLUMN AS SPECIFIED
 - TAKE UP OR DOWN AND REMOVE TO TIP ROAD LIGHTING COLUMN. LANTERN TO BE RETURNED TO CARDIFF COUNCIL DEPOT, BRINDLEY ROAD, LECKWITH, CF11 8TX FOR FUTURE USE.
 - TAKE UP OR DOWN AND REMOVE TO TIP ILLUMINATED SIGN



LOCATION PLAN AND SIGNS
1:500 @ A1

- KERBING KEY**
- PROPOSED PRECAST CONCRETE HALF BATTERED KERB 125x255mm LAID AT 100mm UPSTAND
 - PROPOSED PRECAST CONCRETE BULLNOSED KERB 125x255mm LAID AT 81mm UPSTAND
 - PROPOSED PRECAST CONCRETE TRANSITION KERB 125x255mm
 - PROPOSED PRECAST CONCRETE EDGING KERB TYPE EF 50X100mm LAID FLUSH

- NOTES**
- EDGING KERBS TYPE 'EF' 50x150mm LAID AT THE BACK OF FOOTPATH BORDERING ON ALL HOUSE FRONTAGES.
 - ALL EXISTING DRAINAGE CHANNEL TO REMAIN. ALL RESURFACING UP TO DRAINAGE CHANNEL
 - THE CONTRACTOR IS TO EXPECT APPROXIMATELY 200mm OF HARD DIG IN THE CARRIAGEWAY
 - DRAWING TO BE READ IN CONJUNCTION WITH LIST OF RELEVANT DRAWINGS



PROPOSED SECTION OF RAISED TABLE (NTS)

COPYRIGHT OF CARDIFF COUNCIL. ALL RIGHTS RESERVED.
DRAWING CAN BE SCALED FOR PLANNING APPLICATION PURPOSES ONLY.

© Crown copyright and database rights (2011) Ordnance Survey 100023376.
© Hawlfraint y Goron a hawliau cronfa ddata (2011) Arolwg Ordnans 100023376.

FOR CONSTRUCTION

DESIGN CONTRACTS AND DELIVERY
DYLUNIO CONTRACTAU A DARPARU

Andrew Gregory
DIRECTOR FOR PLANNING, TRANSPORT AND ENVIRONMENT
CYLLUNIO, TRAFNIDIATH A'R AMGYLCHEDD

Rev	By	Date	Description of Amendment	Chk.by	Date

CYNGOR DINAS CAERDYDD THE CITY OF CARDIFF COUNCIL

Project	PRIORITY NARROWING IMPROVEMENTS	Checked	Path
Title	PLAS-MAWR ROAD	Drawn	GC
Scale	AS SHOWN	Project Number	CO19047
Date	08/19	Drawing Number	001

Do not scale drawing except for planning application purposes.

County Hall, Atlantic Wharf, Cardiff CF10 4UW
Telephone 029 2287 2456