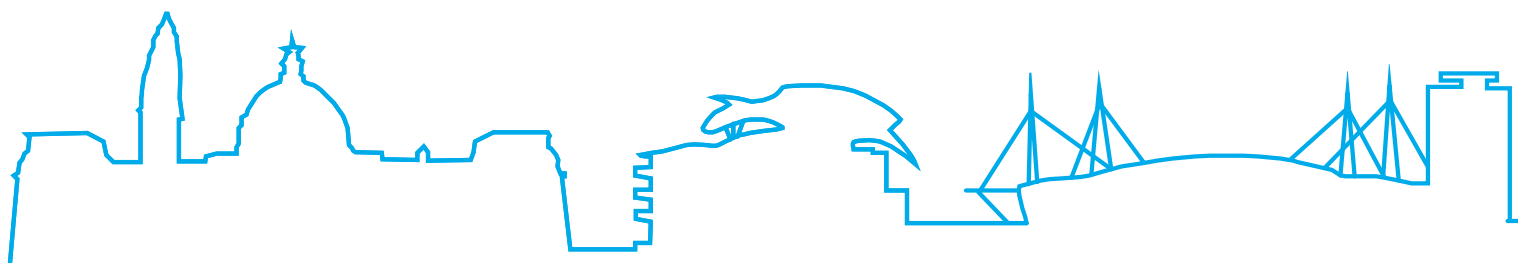


4. People in Cardiff are safe and feel safe

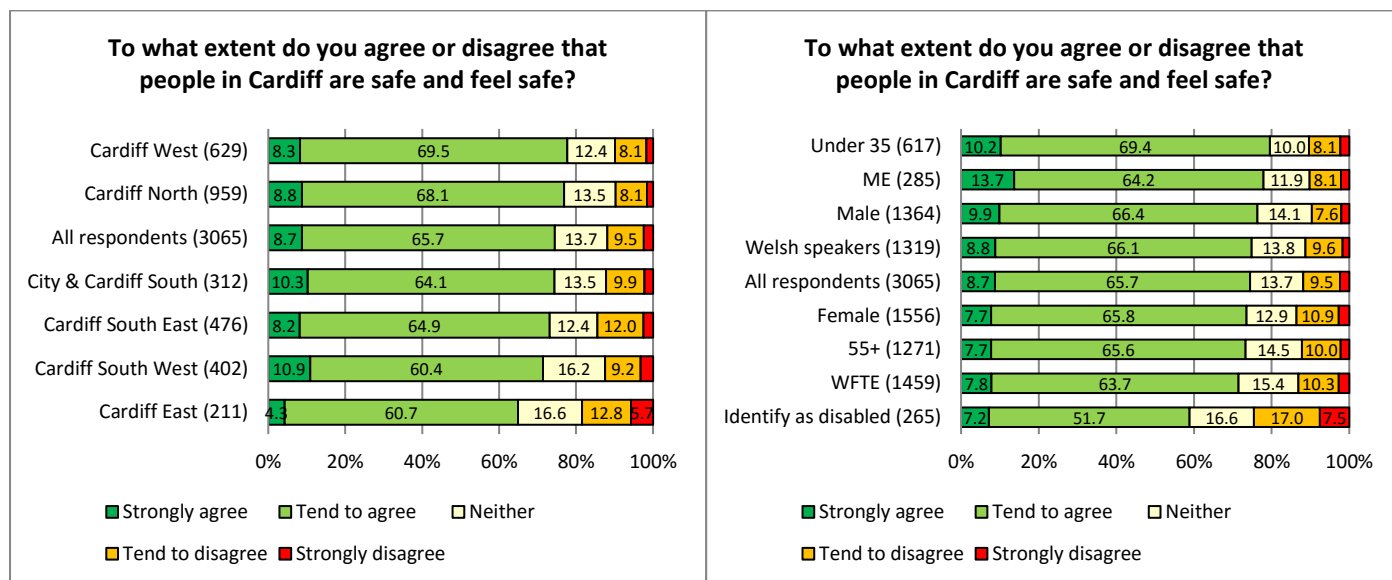
You can navigate the document using links in the table below:

4.1.1	To what extent do you agree or disagree that people in Cardiff are safe and feel safe?
4.2	<u>Community Safety</u>
4.2.1	How safe or unsafe where appropriate, do you feel in the following situations?
4.2.2	How do you feel the following have changed in your local area in the past twelve months?
4.3	<u>Cohesion</u>
4.3.1	How diverse do you feel your neighbourhood is? And to what extent do you agree or disagree that your neighbourhood is a place where people get on well together and help each other?
4.3.2	Welsh Refuge Council sessions: Community safety and cohesion.

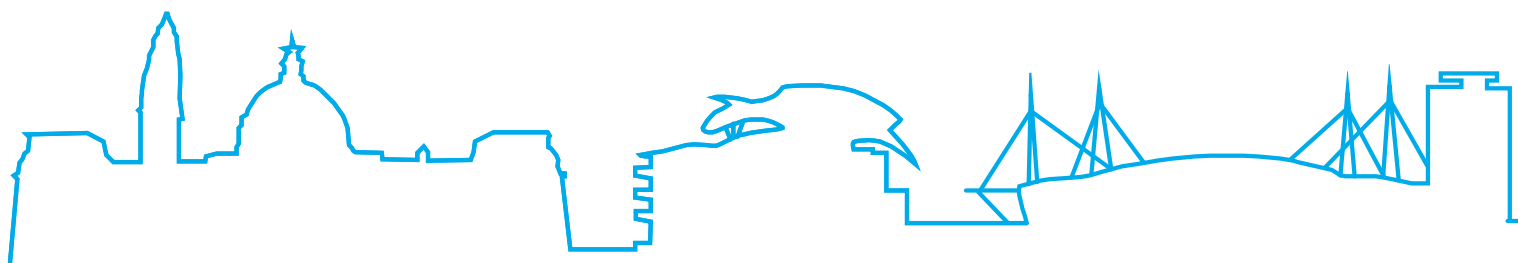


4.1.1 To what extent do you agree or disagree that people in Cardiff are safe and feel safe?

Almost three quarters (74.4%) of respondents agreed that people in Cardiff are safe and feel safe. Residents in Cardiff East and those identifying as disabled were amongst those least likely to agree with the statement (65.0% and 58.9% respectively).



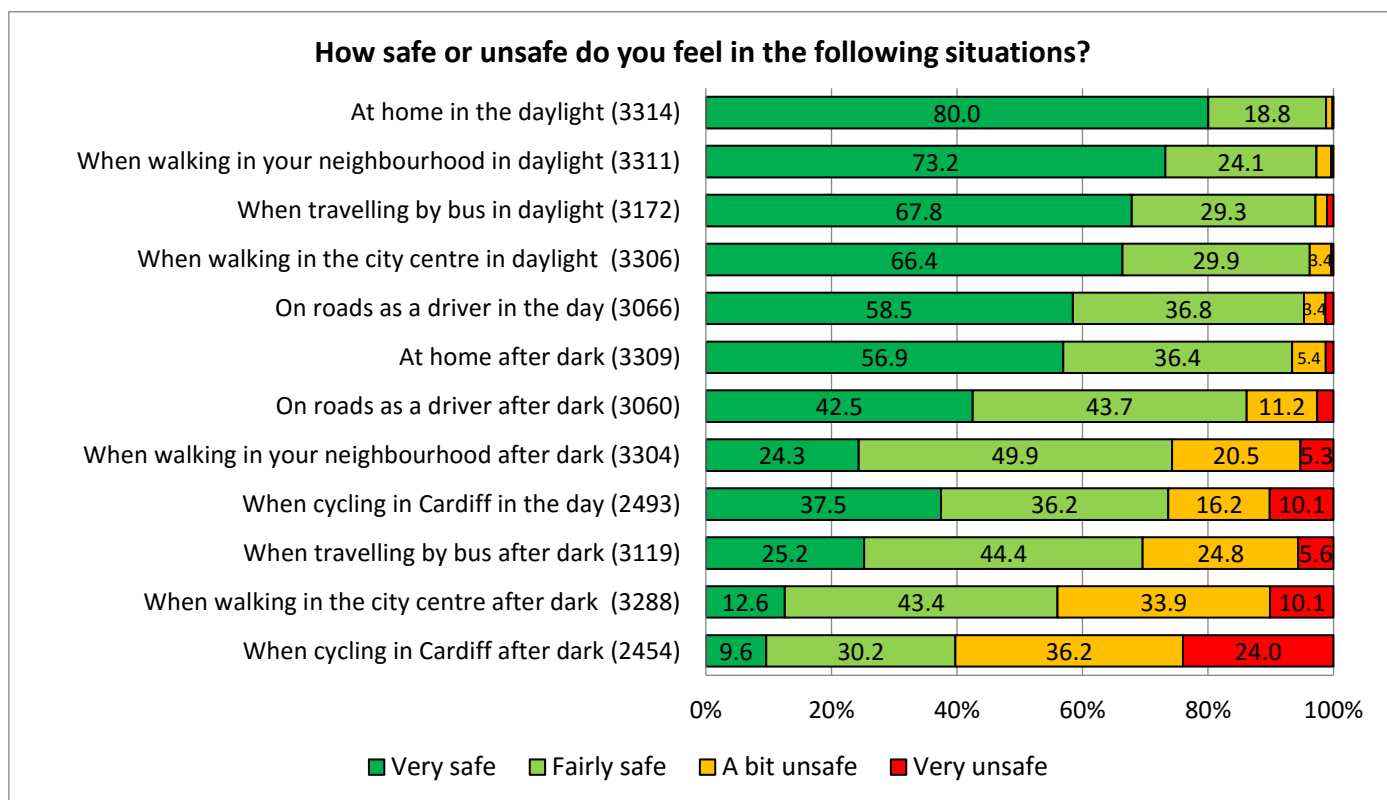
Base sizes shown in brackets.



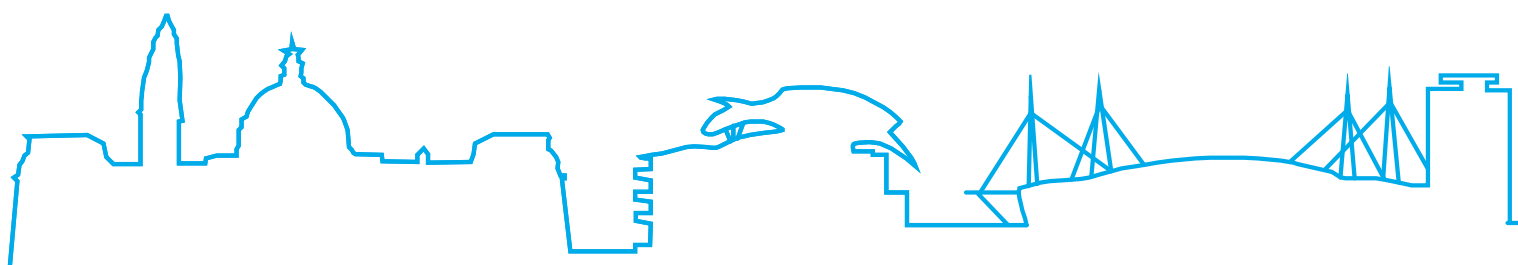
4.2 Community Safety

4.2.1 How safe or unsafe where appropriate, do you feel in the following situations?

Four in five respondents (80.0%) reported feeling 'very safe' at home during daylight with an additional 18.8% feeling fairly safe. After dark however this figure fell to 56.9%. When walking in their own neighbourhood 73.2% reported feeling 'very safe' during daylight whilst just a quarter (24.3%) felt the same way after dark. One in ten respondents 10.1% reported feeling 'very unsafe' when walking in the city centre after dark.



Base sizes in brackets.



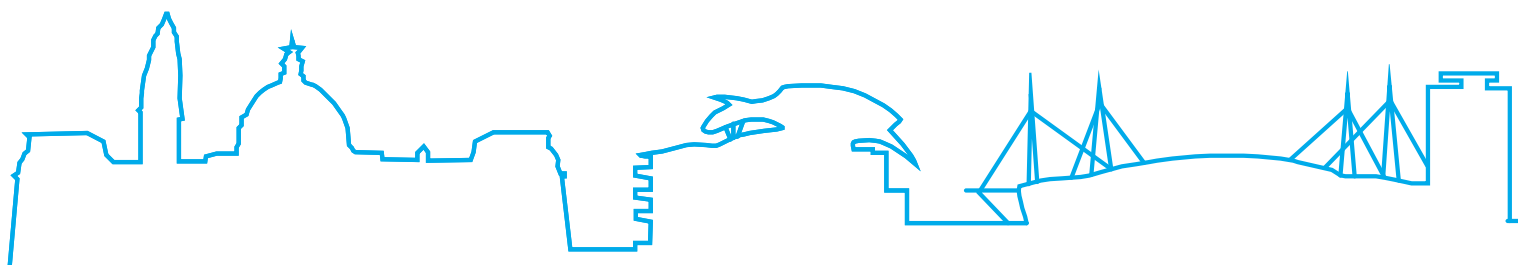
Ask Cardiff Residents Survey 2016

The results were examined both by geography and demographic characteristics and indicate that people in Cardiff East feel less safe in a variety of scenarios.

- More than four in five (83.8%) respondents from Cardiff West reported feeling either 'very' or 'fairly safe' when walking in their neighbourhood after dark compared to just 55.5% of those responding from Cardiff East. Additionally more than a tenth (11.1%) of respondents in Cardiff East reported that they would feel 'very unsafe' in this circumstance.
- More than half (52.6%) of Cardiff East respondents reported feeling 'unsafe' when in the city centre after dark compared to just a third (34.0%) of respondents from City & Cardiff South.
- Only 53.5% of respondents in Cardiff East felt safe travelling by bus after dark compared to 73.1% of respondents from Cardiff South East.
- Nine tenths (89.8%) of respondents in Cardiff West reported feeling safe on the roads as a driver after dark compared to just 79.4% of respondents from Cardiff East.
- Little or no geographic difference was found when people were responding in relation to safety in their own home.

Those identifying as disabled also reported to feel less safe in most of the scenarios provided:

- Less than half of those identifying as disabled (44.9%) and females (49.0%) felt safe when walking in the city centre after dark compared to two thirds (64.9%) of males.
- A fifth (21.7%) of males reported feeling 'unsafe' when travelling by bus after dark. Amongst those identifying as disabled this figure doubles to 43.0%.
- Just a tenth (9.6%) of males felt unsafe on the roads as a driver after dark compared to more than a quarter (27.8%) of those respondents identifying as disabled.

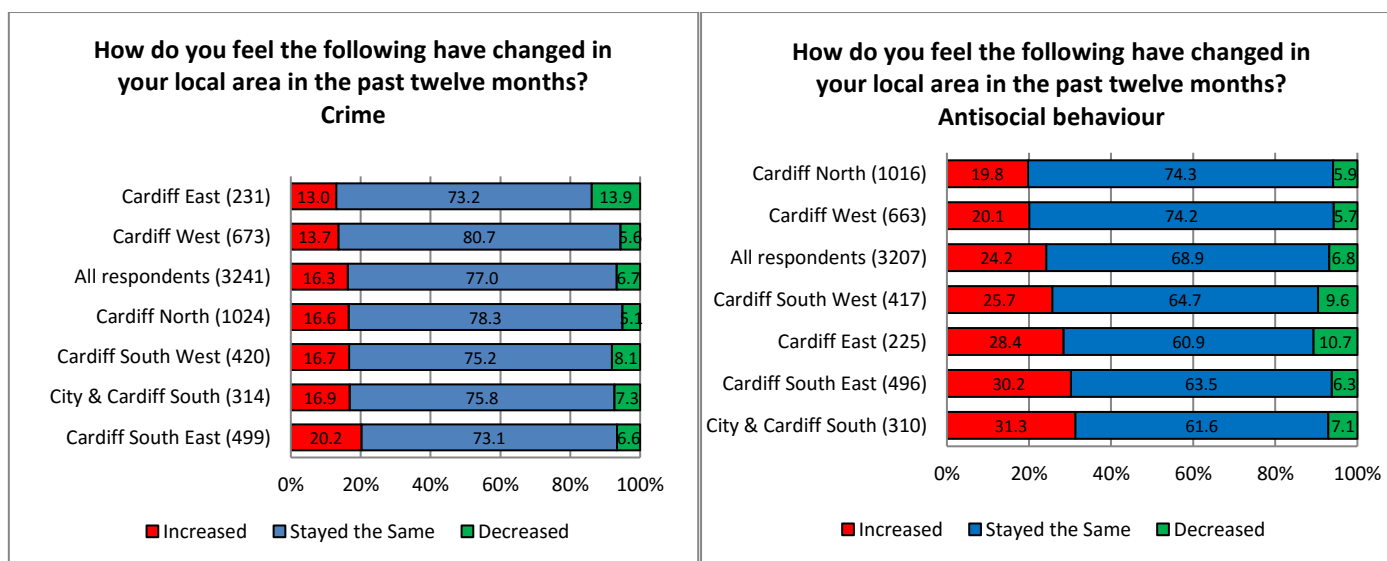


4.2.2 How do you feel the following have changed in your local area in the past twelve months?

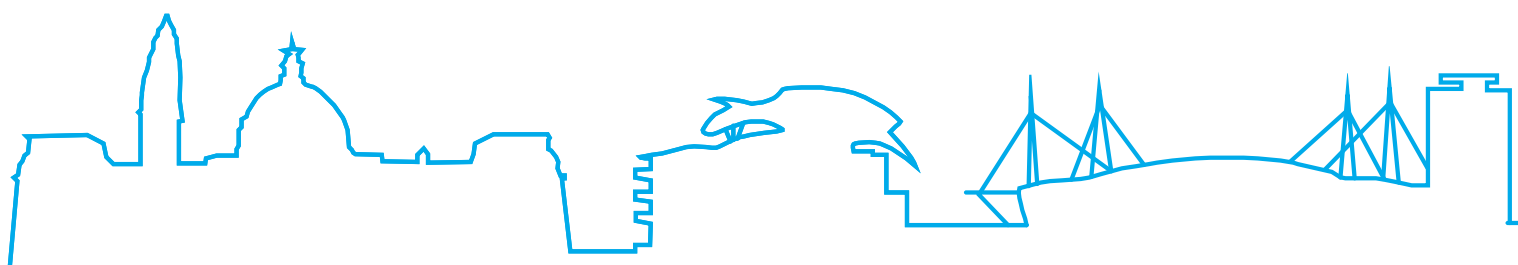
A fifth (20.2%) of respondents in Cardiff South East felt that there has been a rise in crime within their neighbourhood in the past twelve months.

Only in Cardiff East did a higher proportion of respondents consider crime to have fallen than those who believed it to have risen (13.9% compared to 13.0%).

A quarter (24.2%) of respondents overall felt that there has been an increase of antisocial behaviour in their local area over the past twelve months. Within the area of City & Cardiff South the proportion of respondents reporting an increase in this type of behaviour rose to 31.3%.



Base sizes shown in brackets.

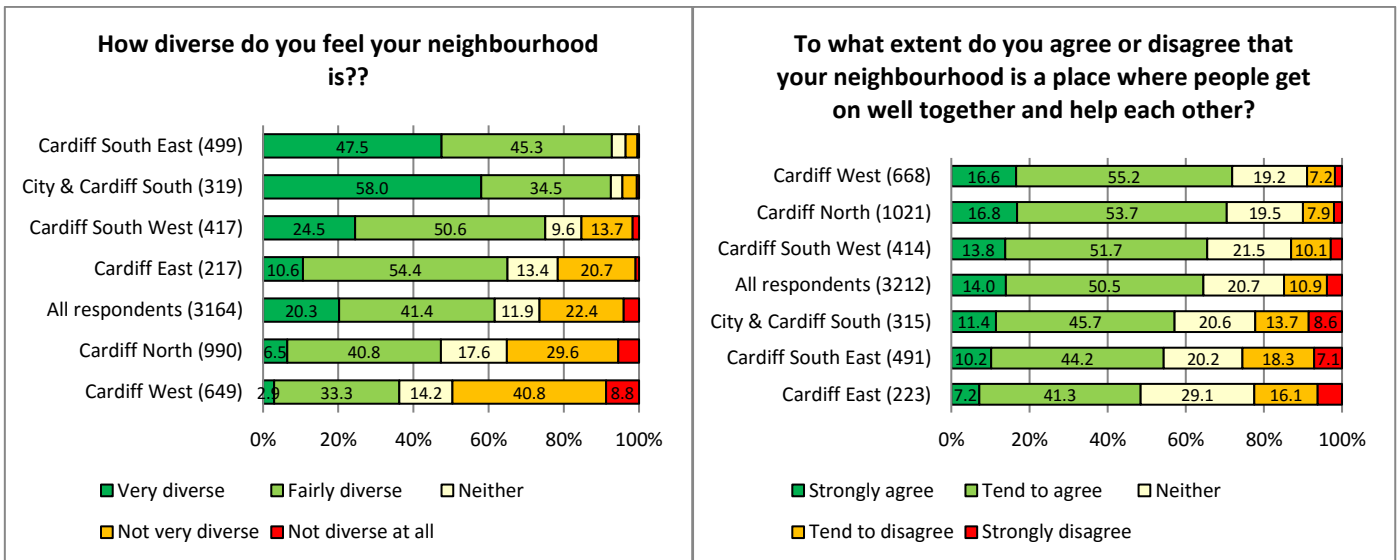


4.3 Cohesion

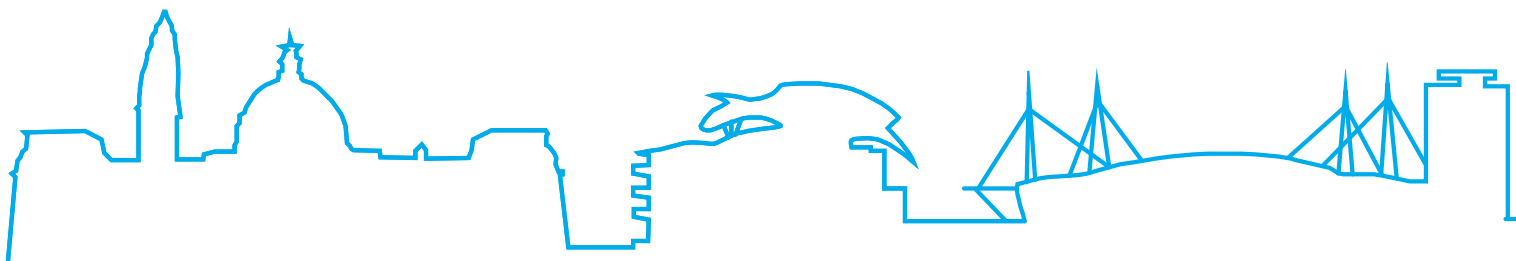
4.3.1 How diverse do you feel your neighbourhood is? And to what extent do you agree or disagree that your neighbourhood is a place where people get on well together and help each other?

A fifth (20.3%) of respondents reported their local areas to be 'very diverse'. Amongst residents in City & Cardiff South this proportion rose to 58.0%. Residents in the West of the city were less likely to describe their neighbourhood as 'diverse' with 49.6% defining it as either 'not very diverse' or 'not diverse at all'.

Seven tenths (71.8%) of respondents in Cardiff West were in agreement that their neighbourhood is a place where people get on well and help each other. Least likely to agree with this statement was respondents from Cardiff East, less than half of whom (48.5%) felt that their neighbourhood is a place where people get on well together and help each other.



Base sizes shown in brackets.



4.3.2. Welsh Refuge Council sessions: Community safety and cohesion.

Ask Cardiff 2016 included Cardiff Research Centre trialing engagement workshop with a view to expanding them to other groups in the future. Two activity-based workshops were held with WRC service users, with a focus on particular Ask Cardiff topics including community safety and cohesion.

The group focused on how safe they felt at home, in their neighbourhood and in the city centre, during day and after dark. Everyone felt very safe, safe, or neither safe or unsafe during the day in all settings, with the exception of one participant who felt unsafe in the day in the city centre. Perception of safety was also high at home during after dark, but was mixed at night in both their communities and the city centre.

While many had not been residents in Cardiff for a whole year we considered how crime and antisocial behavior had changed since their arrival. The majority felt that crime has reduced with mixed opinions about antisocial behavior.

While one reported living in an area of moderate diversity the rest live in neighbourhoods of high ethnic diversity. Similarly one member felt that they live in an area of very low cohesion which was otherwise felt to be moderate to high.

