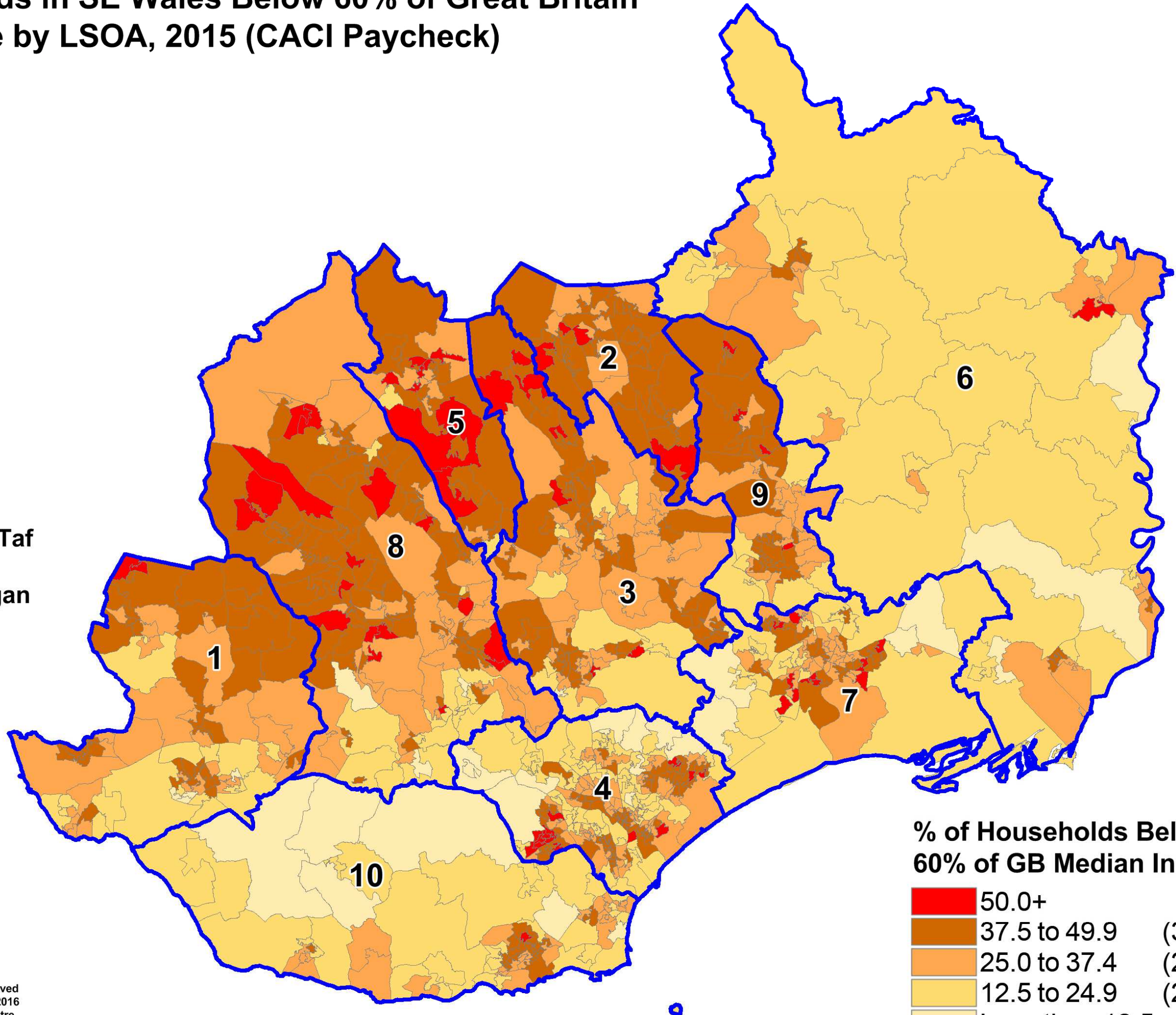


% of Households in SE Wales Below 60% of Great Britain Median Income by LSOA, 2015 (CACI Paycheck)

- 1. Bridgend
- 2. Blaenau Gwent
- 3. Caerphilly
- 4. Cardiff
- 5. Merthyr Tydfil
- 6. Monmouthshire
- 7. Newport
- 8. Rhondda Cynon Taf
- 9. Torfaen
- 10. Vale of Glamorgan



% of Households Below 60% of GB Median Income:

| | | |
|--|----------------|-------|
| | 50.0+ | (68) |
| | 37.5 to 49.9 | (352) |
| | 25.0 to 37.4 | (281) |
| | 12.5 to 24.9 | (206) |
| | Less than 12.5 | (32) |

