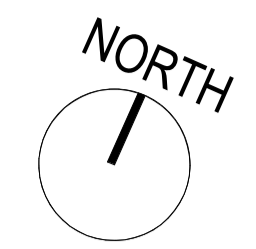


Significant Risks:



Vehicular access
Access for maintenance only

Car park 20 spaces

SRB drop off/ Deliveries

Sprinkler tank & plant
Bins

Canal Parade

MUGA 34mx22m

Refer landscaping plan

Access for emergency vehicles only
Pedestrian access

Pedestrian access

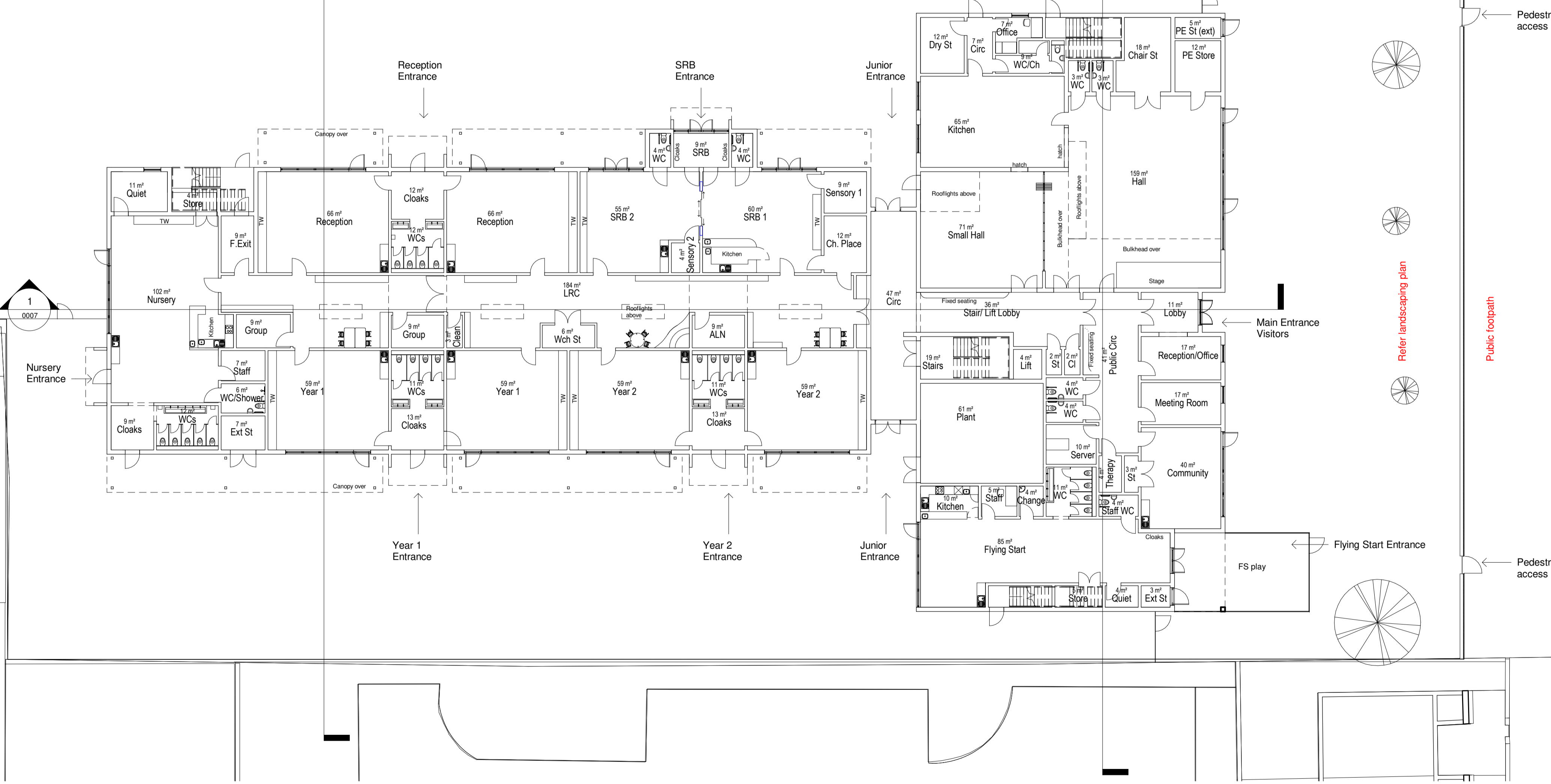
Public footpath

Bute St

Refer landscaping plan

Flying Start Entrance

Pedestrian access



rev/date/by
revision

This map is reproduced from Ordnance Survey material with the permission of Ordnance Survey on behalf of the Controller of Her Majesty's Stationary Office © Crown Copyright. Unauthorised reproduction infringes Crown copyright and may lead to prosecution or civil proceedings. Cardiff Council, LA29026, 001.

CD
CARDIFF COUNCIL
PROJECTS, DESIGN & DEVELOPMENT
Jeff Townsend
RHEOLWR GWETHREDOL DRWS DRD
ACTING OPERATIONAL MANAGER

Do not scale drawing except for Planning Application purposes
Neuadd y Str, Glanrafan Iwerydd, Caerdydd, County Hall, Atlantic Wharf, Cardiff, CF10 4LW
Telephone: 029 2233 0200

| Project | Originator | Zone | Level | Type | Role | Number | Description | Suitability | Revision |
|---------|-------------|-------|-------|---------|------|--------|-------------|---------------|-----------------------------------|
| 1648 | CCC | XX | GF | DR | A | 0002 | GA PLAN | S2 | |
| scale | 1 : 200 @A1 | drawn | AT | checked | MS | date | 06.09.19 | Project Title | St Mary the Virgin Primary School |
| Detail | | | | | | | | | Proposed Ground Floor Plan |