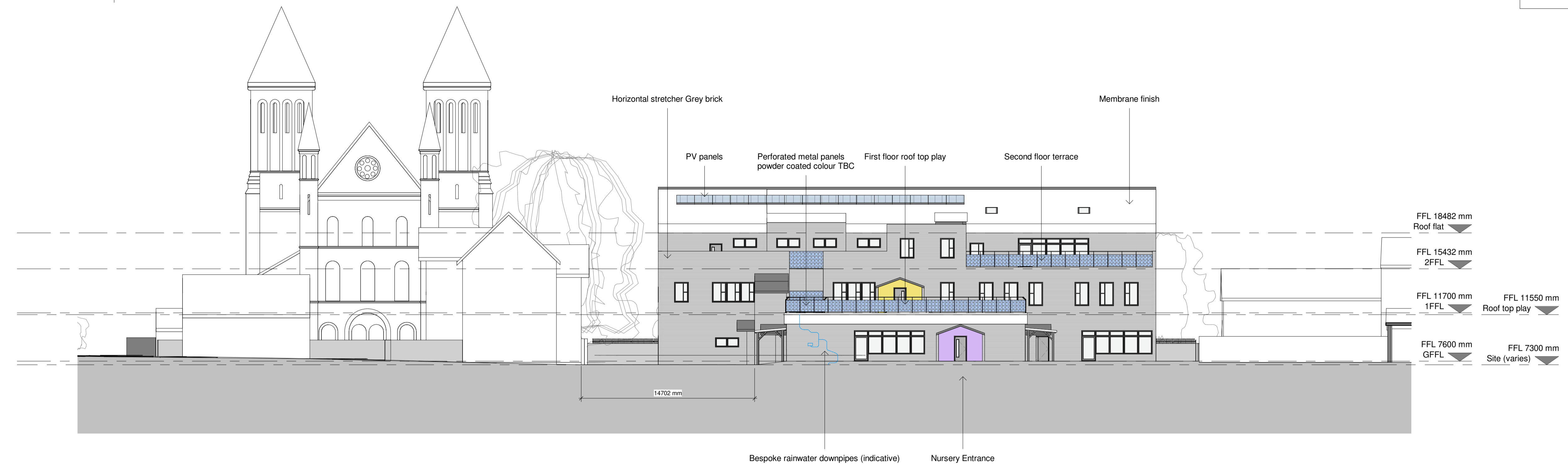


**DANGER** Refer to the Pre-Construction Health & Safety Information Pack

Significant Risks:

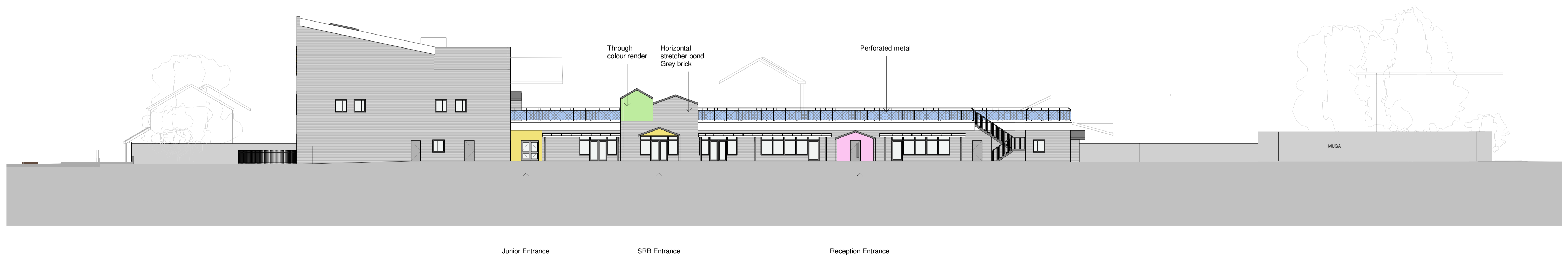
North Church St



**Proposed South West Elevation (rear)**  
1 : 200

Bute St

Canal Parade



**Proposed North West Elevation**  
1 : 200

rev/date/by	revision

Project	Originator	Zone	Level	Type	Role	Number	Description	Suitability	Revision
1648	CCC	XX	ZZ	DR	A	0006	ELES	S2	
filepath Y:\DESIGN + CONSTRUCTION\LINE PROJECTS FROM 01 04 15\1648 St Mary the Virgin Band 02_Shared\Coordination_Models_Drawings									
scale	drawn								
1 : 200 @A1	AT								
date	checked								
06/09/19	MS								
		Project Title			Detail				
		St Mary the Virgin Primary School			Proposed Elevations 02				

This map is reproduced from Ordnance Survey material with the permission of Ordnance Survey on behalf of the Controller of Her Majesty's Stationary Office © Crown Copyright. Unauthorised reproduction infringes Crown copyright and may lead to prosecution or civil proceedings. Cardiff Council, LA29002L, 2001.

FS 25745

**CARDIFF CAERDYDD**

**Jeff Townsend**  
RHEOLWR GWETHREDOL DROS DRŵ  
ACTING OPERATIONAL MANAGER

Do not scale drawing except for Planning Application purposes

Neuadd y Sŵ, Glanfaen Iwerydd, Caerdydd, County Hall, Atlantic Wharf, Cardiff, CF10 4LW  
Telephone: 029 2233 0200