

Uwchgynllun Parc y Gamlas Canal Park Masterplan



GWELEDIGAETH A ARWEINIR GAN Y GYMUNED AR GYFER PARC Y GAMLAS

Mae Cyngor Caerdydd wedi comisiynu The Urbanists i ddatblygu Uwchgynllun ar gyfer Parc y Gamlas. Mae'r Uwchgynllun yn darparu strategaeth adfywio man cyhoeddus sy'n llunio ac yn llywio trawsnewidiad a buddsoddiadau'r Parc yn y dyfodol tra'n sicrhau bod anghenion a dymuniadau'r gymuned leol yn cael eu cyflawni.

I sicrhau dull a arweinir gan y gymuned, mae cyfres o ymgysylltiadau cymunedol wedi'u cynnal o ddechrau'r prosiect. Mae'r rhain wedi caniatáu i ni gasglu adborth gan adran helaeth o'r gymuned leol ac i faterion ac uchelgeisiau allweddol gael eu nodi sydd wedi bod yn sail i'r Uwchgynllun a gyflwynir ar y byrddau canlynol.

Adroddir ar drosolwg o'r dull gweithredu a'r uchelgeisiau allweddol a nodwyd gan y gymuned gyferbyn.

MAE UWCHGYNLLUN PARC Y GAMLAS...

... YN DDOGFEN SY'N NODI BLAENORIAETHAU ALLWEDDOL GAN Y GYMUNED LEOL AR GYFER ADFYWIO PARC Y GAMLAS.

NID YW UWCHGYNLLUN PARC Y GAMLAS...

... YN DDYLUNIAD DIFFINIOL A MANWL O'R PARC. BYDD ANGEN YMGYSYLLTU A CHYD-DDYLUNIO CYMUNEDOL PELLACH I DDATBLYGU'R YMYRIADAU A NODWYD AC I GYFLAWN I GWELEDIGAETH Y GYMUNED.

A COMMUNITY-LED VISION FOR CANAL PARK

Cardiff Council has commissioned The Urbanists to develop a Masterplan for Canal Park. The Canal Park Masterplan provides a public space regeneration strategy that shapes and informs the future transformation and investments of the Park while ensuring the fulfilment of the needs and wants of the local community.

To ensure a community-led approach, a series of community engagements have been carried out from the beginning of the project. These allowed us to collect feedback from a vast section of the local community and identified key issues and ambitions which underpinned and shaped the Masterplan presented in the following boards.

An overview of the approach and the key ambitions identified by the community are reported opposite.

THE CANAL PARK MASTERPLAN IS...

...A DOCUMENT THAT IDENTIFIES KEY PRIORITIES FROM THE LOCAL COMMUNITY FOR THE REGENERATION OF CANAL PARK.

THE CANAL PARK MASTERPLAN IS NOT...

...A DEFINITIVE AND DETAILED DESIGN OF THE PARK. FURTHER ENGAGEMENT AND COMMUNITY CO-DESIGNS WILL BE REQUIRED TO PROGRESS THE DEVELOPMENT OF THE IDENTIFIED PHYSICAL INTERVENTIONS AND TO DELIVER THE COMMUNITY'S VISION.

STRATEGAETH YMGYSYLLTU A THROSOLWG

Mae'r broses ymgysylltu â rhanddeiliaid wedi helpu i baratoi'r Uwchgynllun. Nododd y strategaeth ymgysylltu bum uchelgais gymunedol allweddol a chyfres o syniadau ar gyfer pob un o'r uchelgeisiau.

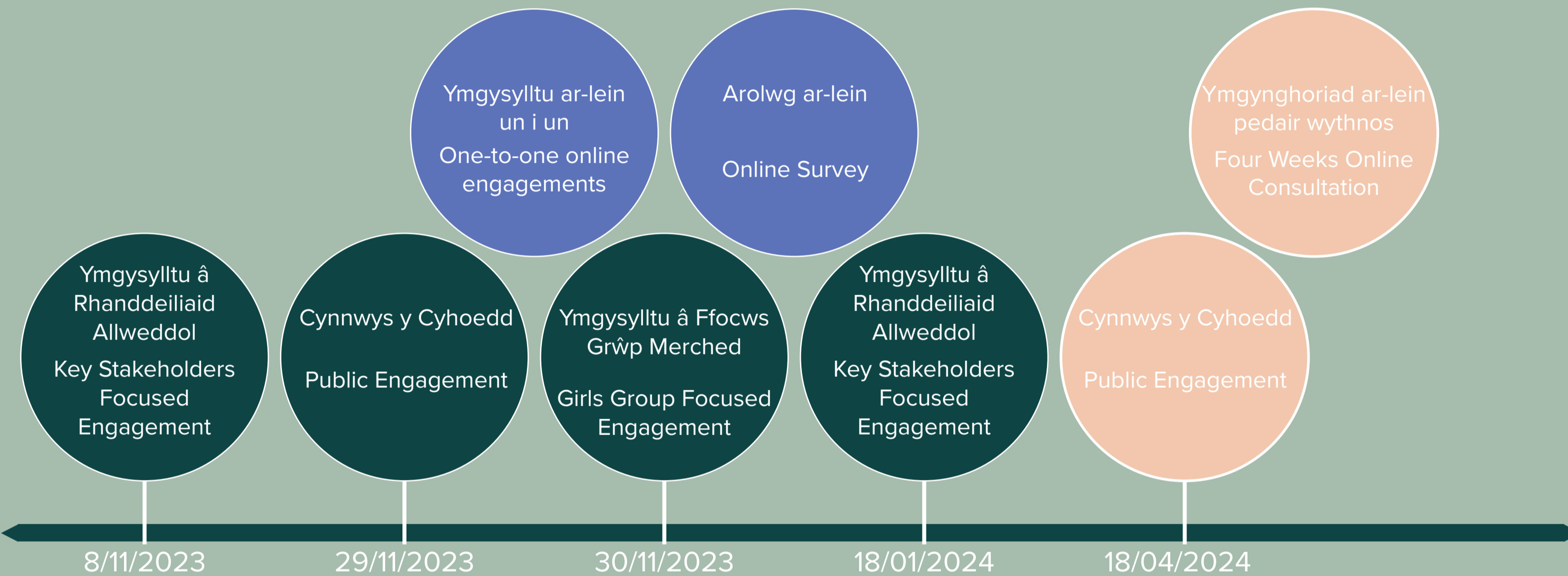
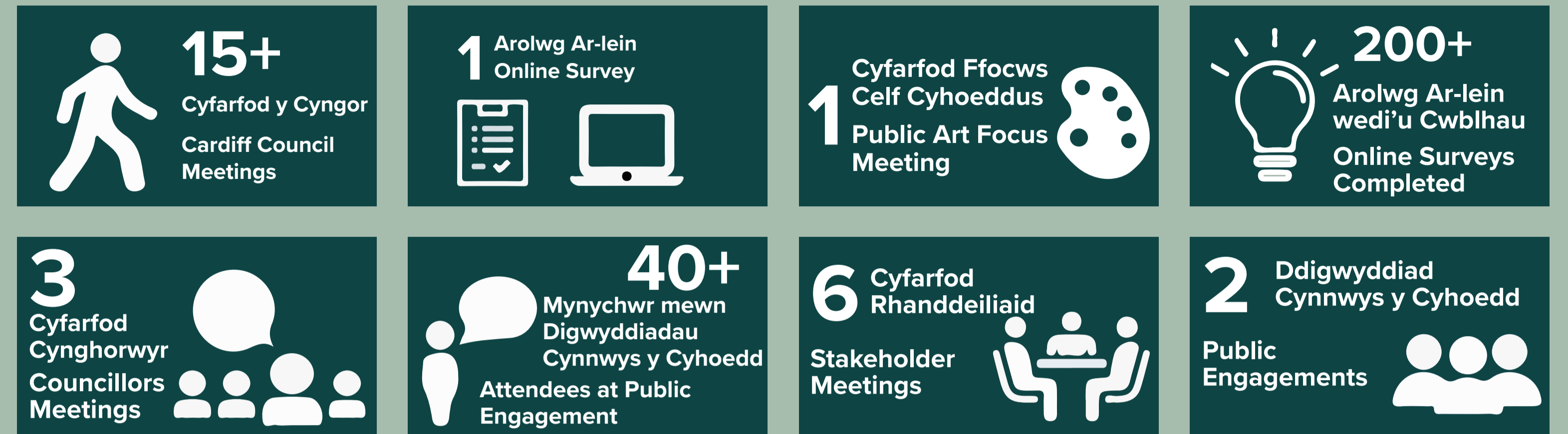
Mae'r broses ymgysylltu a gynhaliwyd ar gyfer Parc y Gamlas wedi'i chrynhofi gyferbyn.

SYLWER: NID YW UWCHGYNLLUN PARC Y GAMLAS A ADRODDIR YMA WEDI'I GWBLHAU AC RYDYM AM GLYWED GENNYCH I SICRHU BOD Y CYNLLUN YN ADLEWYRCHU DYMUNIADAU'R GYMUNED.

ENGAGEMENT STRATEGY AND OVERVIEW

Stakeholder engagement has shaped the preparation of the Masterplan. The engagement strategy identified five key community ambitions and a series of ideas for each of the ambitions. The engagement process carried out for Canal Park is summarised opposite.

NOTE: THE CANAL PARK MASTERPLAN REPORTED HERE IS NOT FINALISED AND WE WANT TO HEAR FROM YOU TO ENSURE THAT THE PLAN REFLECTS THE WANTS OF THE COMMUNITY.



ADBORTH O'R YMGYSYLLTU A BLAENORIAETHAU'R GYMUNED

Trwy'r digwyddiadau ymgysylltu, nododd y gymuned bum uchelgais a chyfres o syniadau prosiect. Mae'r uchelgeisiau wedi'u hadrodd gyferbyn. Mae'r prosiectau blaenoriaeth sydd i'w cyflawni isod:

- Caffi gyda tholedau ac ystafelloedd newid babanod;
- Cwrt pêl-fasged gwell wedi'i ail-wynebu gyda llifoleuadau newydd;
- Goleuadau gwell a mwy ohonynt;
- Man chwarae a chwaraeon diogel.

ENGAGEMENT FEEDBACK AND COMMUNITY'S PRIORITIES

Through the engagement events, the community identified five ambitions and a series of project ideas. The ambitions are reported opposite. The priority projects to be delivered are reported below:

- Cafe with toilets and baby changing rooms;
- Resurfaced/Improved Basketball Court with new flood lighting;
- Better and more lighting;
- Safe and secure play and sports space.

DATGELU TREFTADAETH HERITAGE REVEALED



Uchelgais
Datlu treftadaeth a hanes y safle

Ambition
Celebrate the heritage and history of the site

CYNHWYSOL AC ACTIF INCLUSIVE AND ACTIVE



Uchelgais
Cynnig ystod ehangach o gyfleusterau a darpariaethau sy'n hygyrch ac yn cael eu rheoli gan y gymuned leol

Ambition
Provide a wider range of facilities and provisions accessible and managed by the local community

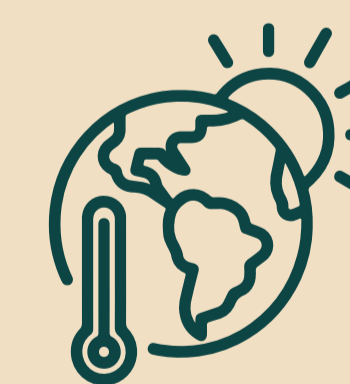
CYSUR A DIOGELWCH SAFETY AND COMFORT



Uchelgais
Gwneud Parc y Gamlas yn lle diogel i bawb o bob oedran a bob amser

Ambition
Make Canal Park a safe space for all ages and at all times

GWYRDD A LLIWGAR GREEN AND COLOURFUL



Uchelgais
Cynnig amrywiaeth o leoliadau gwyrdd amrywiol a golygfeydd gyda mwy o liw a phlanhigion gwahanol

Ambition
Provide a variety of diversified green settings and scenery with more colour and different plants

CYSYLLTIADAU DA WELL CONNECTED



Uchelgais
Cynnig llwybrau mwy diogel a gwell ar draws y Parc gyda manau pwrpasol i feicwyr

Ambition
Provide safer and better paths across the Park with dedicated spaces for cyclists

Uwchgynllun Parc y Gamlas Canal Park Masterplan



Mae'r Strategaeth ar yr ochr yn nodi tair rhan o'r parc sy'n adeiladu ar y darpariaethau a'r dirwedd bresennol i wella asedau'r parc a chreu ymdeimlad cryfach o hunaniaeth.

The Strategy Plan on the side identifies three areas of the park which build upon the existing provisions and landscape to enhance the park's assets and create a stronger sense of identity.

1 Y Rec / The Rec
Y Rec yw rhan ogleddol y parc. Mae'n cynnig darpariaethau chwarae a chwaraeon ffurfiol i bawb gyda ffocws ar gynwysoldeb.

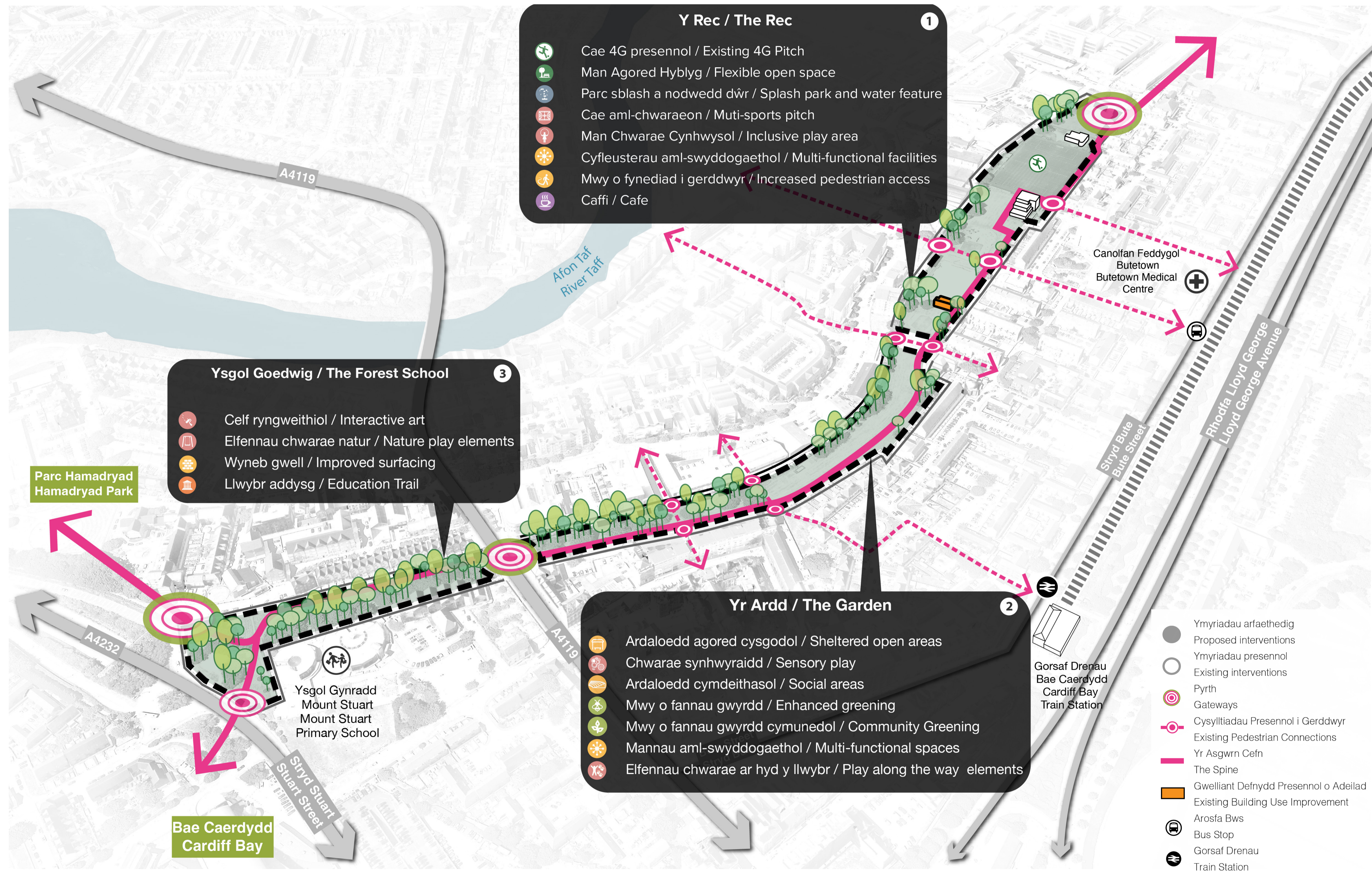
The Rec is the northern part of the park. It provides formal sports and play provisions for all with a focus on inclusivity.

2 Yr Ardd / The Garden
Yr Ardd yw rhan ganolog y parc. Mae'n cynnig mannau awyr agored anffurfiol wedi'u fframio gan dirwedd amrywiol i gefnogi bioamrywiaeth, chwarae anffurfiol, a gweithgareddau hamdden.

The Garden is the central part of the park. It provides informal outdoor spaces framed by a diverse landscape to support biodiversity, informal play, and leisure activities.

3 Ysgol Goedwig / The Forest School
Yr Ysgol Goedwig yw rhan ddeheuol y parc. Mae'n cynnig lleoedd ar gyfer gweithgareddau addysg a dysgu mewn synergedd â'r ysgol gyfagos.

The Forest School is the southern part of the park. It provides spaces for education and learning activities in synergy with the adjacent school.



Y Rec / The Rec

- Cae 4G presennol / Existing 4G Pitch
- Man Agored Hyblyg / Flexible open space
- Parc sblash a nodwedd dŵr / Splash park and water feature
- Cae aml-chwaraeon / Multi-sports pitch
- Man Chwarae Cynhwysol / Inclusive play area
- Cyfleusterau aml-swyddogaethol / Multi-functional facilities
- Mwy o fynediad i gerddwyr / Increased pedestrian access
- Caffi / Cafe

Ysgol Goedwig / The Forest School

- Celf ryngweithiol / Interactive art
- Elfennau chwarae natur / Nature play elements
- Wyneb gwell / Improved surfacing
- Llwybr addysg / Education Trail

Yr Ardd / The Garden

- Ardaloedd agored cysgodol / Sheltered open areas
- Chwarae synhwyrdd / Sensory play
- Ardaloedd cymdeithasol / Social areas
- Mwy o fannau gwyrdd / Enhanced greening
- Mwy o fannau gwyrdd cymunedol / Community Greening
- Mannau aml-swyddogaethol / Multi-functional spaces
- Elfennau chwarae ar hyd y llwybr / Play along the way elements

- Ymyriadau arfaethedig / Proposed interventions
- Ymyriadau presennol / Existing interventions
- Pyrrth / Gateways
- Cysylltiadau Presennol i Gerddwyr / Existing Pedestrian Connections
- Yr Asgwrn Cefn / The Spine
- Gwelliant Defnydd Presennol o Adeilad / Existing Building Use Improvement
- Arosfa Bws / Bus Stop
- Gorsaf Drenau / Train Station

Uwchgynllun Parc y Gamlas Canal Park Masterplan



Mae tair ardal Parc y Gamlas wedi'u cysylltu gan yr Asgwrn Cefn, cyswllt allweddol rhwng y gogledd a'r de sy'n sicrhau'r canlynol:

The three areas of Canal Park are tied up and connected by the Spine, a key north-south link that ensures the following:

Elfennau dynodi'r ffordd/Wayfinding
Arwyddion clir a chydlynol ac elfennau dynodi'r ffordd i annog archwilio a llywio hawdd drwy'r parc.

Clear and cohesive signage and wayfinding elements to encourage exploration and easy navigation through the park.

Goleuadau a TCC/Lighting and CCTV
Goleuadau a chamerau TCC integredig i wella diogelwch ac ymestyn yr oriau y gellir defnyddio'r parc.

Integrated lighting and CCTV cameras to improve safety and extend usable hours of the park.

Symudiad/Movement
Symudiad gwell drwy'r Parc i gerddwyr a beicwyr. Llwybr beicio ar wahân i sicrhau diogelwch cerddwyr.

Improved pedestrian and cycle movement through the Park. Separated cycle path to ensure pedestrian safety.

Deunyddiau/Materiality
Defnydd cyson o ddeunyddiau a phalet lliw i glymu'r gwahanol ardaloedd cymeriad gyda'i gilydd, dathlu'r hanes a'r gymuned leol, a chreu ymdeimlad cryfach o hunaniaeth.

Consistent use of materiality and colour palette to tie the different character areas together, celebrate the local history and community, and create a stronger sense of identity.

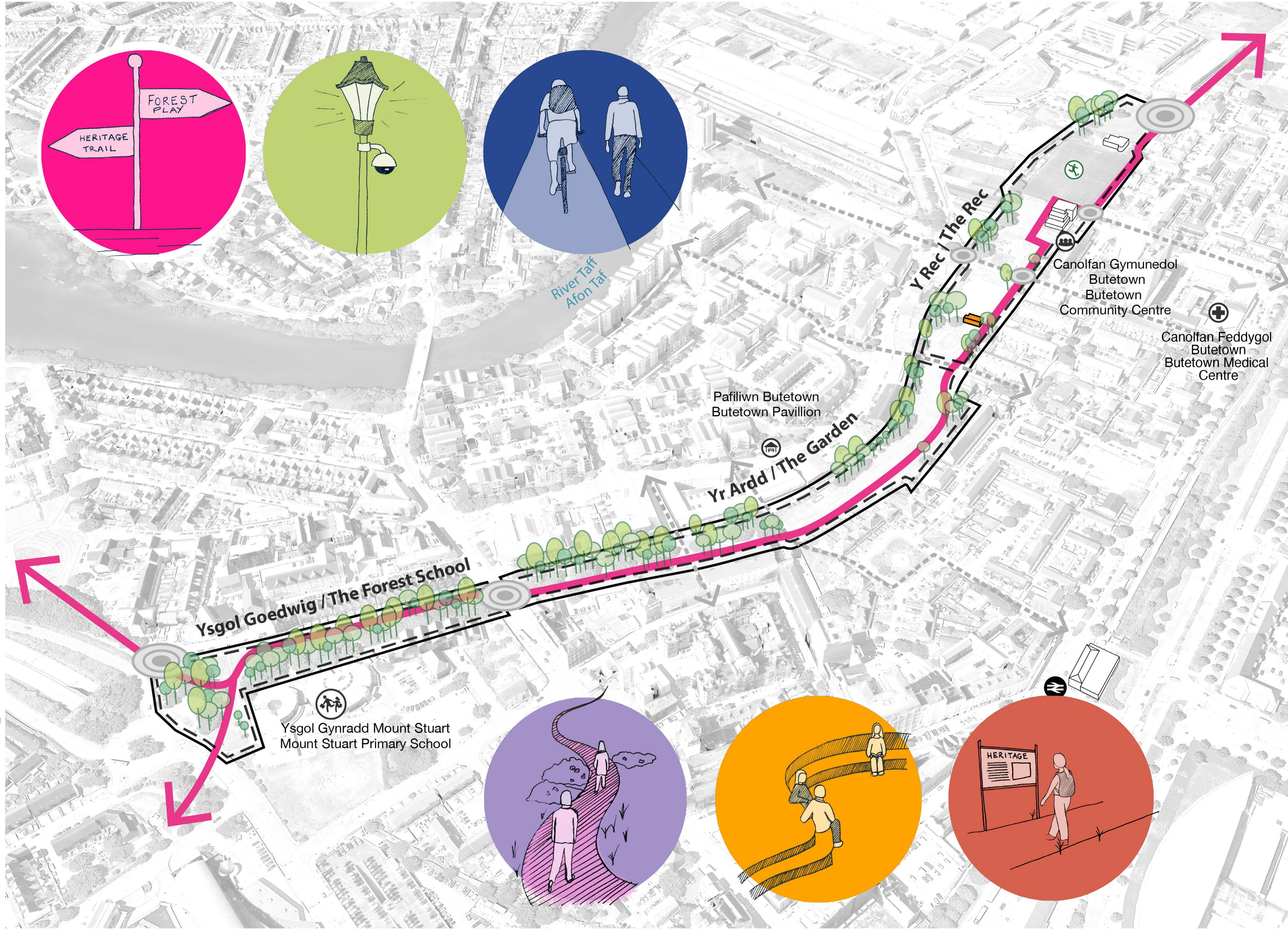
Darpariaeth ar y Llwybr/Provision on the Way
Darpariaethau ffurfiol ac anffurfiol integredig ar gyfer eistedd, gweithgareddau corfforol a chwarae.

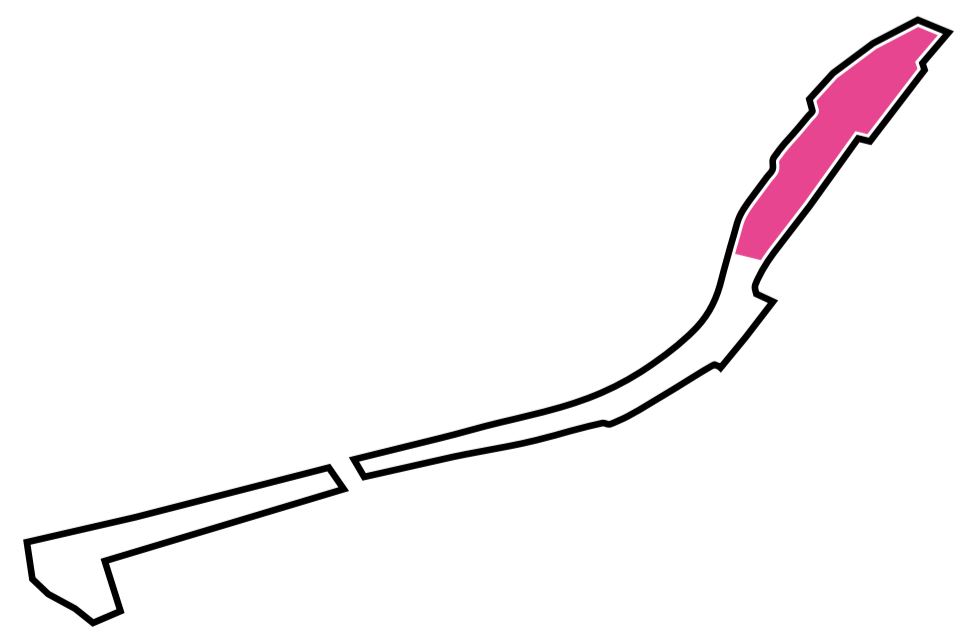
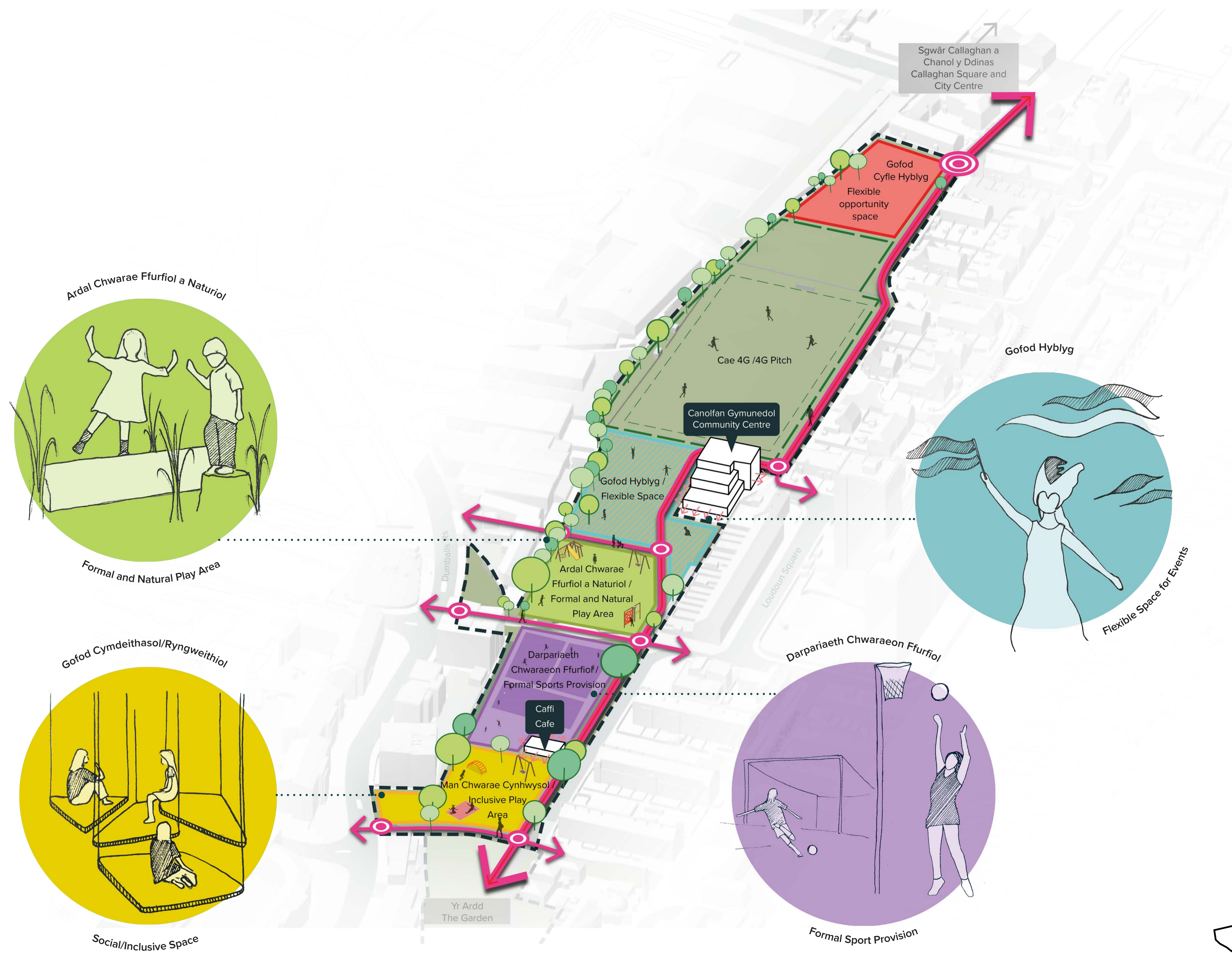
Integrated formal and informal provisions for seating, physical activities and play.

Celf Gyhoeddus a Threftadaeth/Public Art and Heritage

Llwybrau celf gyhoeddus a threftadaeth integredig i ddod â diddordeb gweledol a datgelu hanes y Parc.

Integrated public art and heritage trails to bring visual interest and reveal the history of the Park.





Uwchgynllun Parc y Gamlas Canal Park Masterplan

